

**Table 1. Consumer Price Index (CPI) And Inflation Rate
(Point To Point)**

(1995-96 = 100)

CPI Classification	2004-05	2005-06	2006-07	2007-08	2008		
					June	July	Aug
NATIONAL							
General index	153.23	164.21	176.06	193.54	203.45	206.86	207.27
<i>Inflation</i>	6.48	7.17	7.22	9.93	10.04	10.82	10.11
Food index	158.08	170.34	184.18	206.79	221.57	223.94	223.77
<i>Inflation</i>	7.91	7.76	8.12	12.28	14.10	13.92	12.36
Nonfood	147.14	156.56	165.79	176.26	179.32	184.44	185.72
<i>Inflation</i>	4.33	6.40	5.90	6.32	3.54	5.93	6.55
ALL RURAL							
General index	154.03	165.37	177.42	195.14	205.27	209.01	209.53
<i>Inflation</i>	6.62	7.36	7.30	9.99	10.29	11.19	10.51
Food index	156.82	168.77	182.18	203.93	218.23	220.60	220.52
<i>Inflation</i>	7.99	7.62	7.96	11.94	14.00	13.82	12.34
Nonfood	149.29	159.59	169.33	180.19	183.25	189.31	190.84
<i>Inflation</i>	4.27	6.90	6.10	6.41	3.50	6.32	7.05
ALL URBAN							
General index	151.29	161.39	172.73	189.65	199.02	201.62	201.75
<i>Inflation</i>	6.14	6.68	7.03	9.80	9.40	9.91	9.11
Food index	161.14	174.18	189.06	213.73	229.72	232.09	231.67
<i>Inflation</i>	7.71	8.09	8.54	13.05	14.33	14.17	12.40
Nonfood	141.90	149.20	157.17	166.69	169.76	172.57	173.24
<i>Inflation</i>	4.49	5.14	5.34	6.06	3.64	4.89	5.20

Fig-1: Annual Inflation Rate

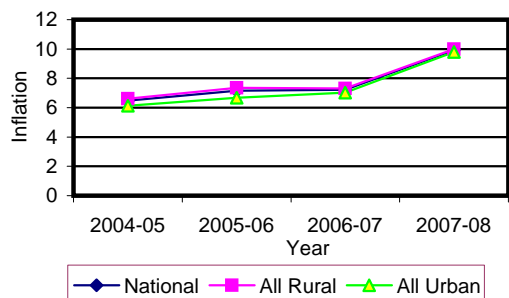


Fig-2: Monthly inflation Rate
(Point to Point)

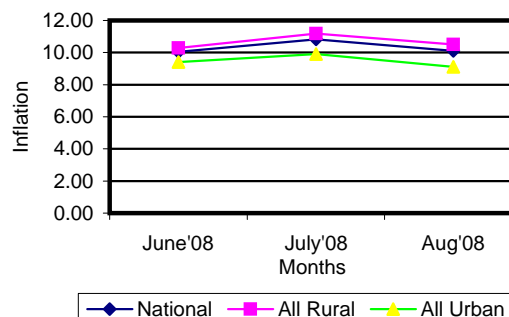


Table 2. Consumer Price Index (CPI) : National

(1995-96 = 100)

CPI Classification	2004-05	2005-06	2006-07	2007-08	2008		
					June	July	Aug
General	153.23 6.48	164.21 7.17	176.06 7.22	193.54 9.93	203.45 4.20	206.86 1.68	207.27 0.20
1. Food , beverage & tobacco	158.08 7.90	170.34 7.76	184.18 8.12	206.79 12.28	221.57 6.29	223.94 1.07	223.77 -0.08
2. Non-food of which	147.14 4.33	156.56 6.40	165.79 5.90	176.26 6.32	179.32 0.73	184.44 2.86	185.72 0.69
I. Clothing & footwear	142.15 4.38	148.35 4.36	156.79 5.69	164.53 4.94	167.58 0.81	168.56 0.58	168.92 0.21
II. Gross rent, fuel & lighting	141.43 2.52	152.02 7.49	162.32 6.78	174.7 7.63	176.67 0.33	186.04 5.30	187.74 0.91
III. Furniture, furnishing, household equipments & operation	143.18 3.79	151.21 5.61	162.61 7.54	178.56 9.81	184.27 0.70	186.10 0.99	189.43 1.79
IV. Medical care & health expenses	162.47 5.25	169.62 4.40	178.49 5.23	185.66 4.02	187.25 0.49	187.78 0.28	187.90 0.06
V. Transport & communication	179.94 5.36	191.66 6.51	201.15 4.95	211.01 4.90	213.37 0.48	219.90 3.06	220.50 0.27
VI. Recreation, entertainment, education & cultural services	150.24 6.32	165.42 10.10	171.47 3.66	174.86 1.98	178.08 0.81	178.92 0.47	179.25 0.18
VII. Misc. goods & services	137.78 2.96	143.25 3.97	151.44 5.72	166.69 10.07	174.99 2.89	177.66 1.53	180.02 1.33

Note : Figures in italics indicate percentage change over previous year/month

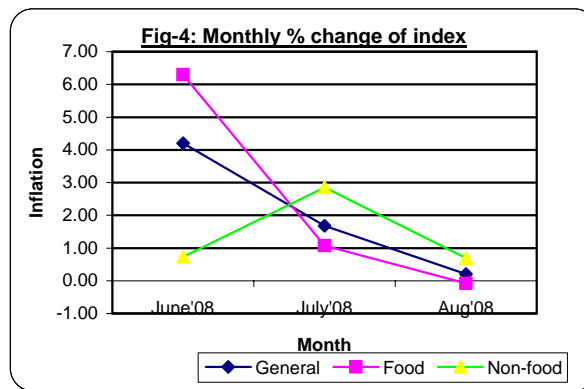
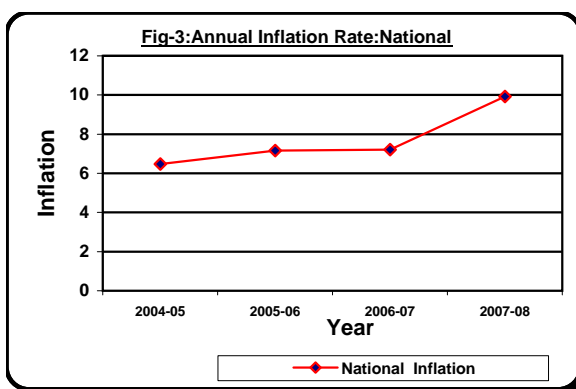


Table 3. Consumer Price Index (CPI) : All Rural

(1995-96 = 100)

CPI Classification	Weight	2005-06	2006-07	2007-08	2008		
					June	July	Aug
General	100.00	165.37	177.42	195.14	205.27	209.01	209.53
		7.36	7.29	9.99	4.37	1.82	0.25
1. Food , beverage & tobacco	62.96	168.77	182.18	203.93	218.23	220.60	220.52
		7.62	7.95	11.94	6.23	1.09	-0.04
2. Non-food of which	37.04	159.59	169.33	180.19	183.25	189.31	190.84
		6.90	6.10	6.41	0.81	3.31	0.81
I. Clothing & footwear	6.88	148.19	155.88	162.08	164.88	165.85	166.18
		4.56	5.19	3.98	0.87	0.59	0.20
II. Gross rent, fuel & lighting	14.69	160.63	172.14	185.85	188.40	201.22	203.40
		8.80	7.17	7.96	0.42	6.80	1.08
III. Furniture, furnishing, household equipments & operation	2.70	149.45	160.38	174.31	178.01	179.88	183.81
		5.32	7.31	8.69	0.37	1.05	2.18
IV. Medical care & health expenses	2.79	175.03	185.41	191.72	192.92	193.21	193.26
		5.09	5.93	3.40	0.50	0.15	0.03
V. Transport & communication	2.98	191.31	201.06	211.49	213.22	216.72	217.31
		6.92	5.10	5.19	0.47	1.64	0.27
VI. Recreation, entertainment, education & cultural services	3.20	168.85	174.74	178.03	181.25	182.28	182.57
		9.80	3.49	1.88	1.07	0.57	0.16
VII. Misc. goods & services	3.80	139.40	147.95	164.03	170.98	174.00	176.33
		3.34	6.13	10.87	2.84	1.77	1.34

Note : Figures in italics indicate percentage change over previous year/month

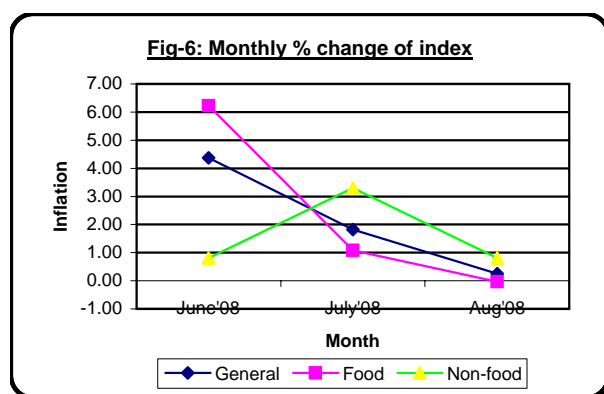
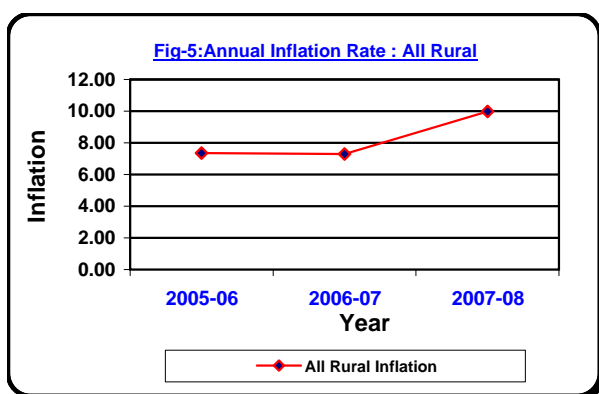


Table 4. Consumer Price Index (CPI) : All Urban

(1995-96 = 100)

CPI Classification	Weight	2005-06	2006-07	2007-08	2008		
					June	July	Aug
General	100.00	161.39	172.73	189.65	199.02	201.62	201.75
		6.68	7.03	9.80	3.78	1.31	0.06
1. Food , beverage & tobacco	48.80	174.18	189.06	213.73	229.72	232.09	231.67
		8.09	8.54	13.05	6.45	1.03	-0.18
2. Non-food of which	51.20	149.20	157.17	166.69	169.76	172.57	173.24
		5.14	5.34	6.06	0.52	1.66	0.39
I. Clothing & footwear	6.79	148.72	159.02	170.51	174.15	175.17	175.58
		3.87	6.93	7.23	0.68	0.59	0.23
II. Gross rent, fuel & lighting	22.17	131.07	138.41	147.54	148.09	149.09	149.60
		3.77	5.60	6.60	0.03	0.68	0.34
III. Furniture, furnishing, household equipments & operation	2.58	155.49	168.05	188.92	199.51	201.26	203.12
		6.28	8.08	12.42	1.42	0.88	0.92
IV. Medical care & health expenses	2.97	156.47	161.64	170.90	173.43	174.54	174.83
		2.61	3.30	5.73	0.44	0.64	0.17
V. Transport & communication	7.07	192.53	201.38	209.84	213.75	227.66	228.26
		5.55	4.60	4.20	0.52	6.51	0.26
VI. Recreation, entertainment, education & cultural services	6.40	157.05	163.51	167.16	170.35	170.74	171.18
		10.91	4.11	2.23	0.14	0.23	0.26
VII. Misc. goods & services	3.22	152.62	159.93	173.16	184.77	186.58	189.01
		5.40	4.79	8.27	3.01	0.98	1.30

Note : Figures in italics indicate percentage change over previous year/month

