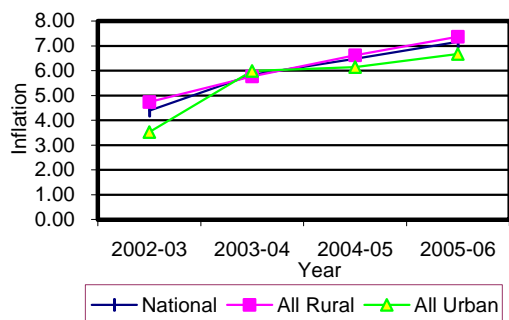


**Table 1 Consumer Price Index (CPI) And Inflation Rate  
(Point To Point)**

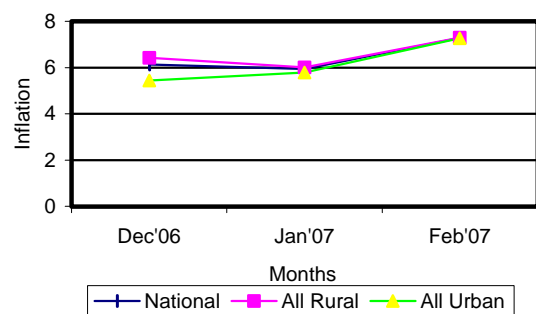
( 1995-96 = 100)

CPI Classification	2002-03	2003-04	2004-05	2005-06	2007		
					Dec	Jan	Feb
<b>NATIONAL</b>							
General index	135.97	143.90	153.23	164.21	173.18	172.65	175.02
<i>Inflation</i>	4.38	5.83	6.48	7.17	6.13	5.94	7.28
Food index	137.01	146.50	158.08	170.34	180.45	179.15	182.09
<i>Inflation</i>	3.46	6.93	7.91	7.76	7.08	6.65	8.36
Nonfood	135.13	141.03	147.14	156.56	163.99	164.72	166.28
<i>Inflation</i>	5.66	4.37	4.33	6.40	4.65	4.95	5.74
<b>ALL RURAL</b>							
General index	136.58	144.46	154.03	165.37	174.65	173.85	176.23
<i>Inflation</i>	4.74	5.77	6.62	7.36	6.42	6.01	7.29
Food index	136.29	145.22	156.82	168.77	178.92	177.15	179.99
<i>Inflation</i>	4.05	6.55	7.99	7.62	7.35	6.51	8.08
Nonfood	137.06	143.18	149.29	159.59	167.39	168.24	169.83
<i>Inflation</i>	5.91	4.47	4.27	6.90	4.77	5.12	5.89
<b>ALL URBAN</b>							
General index	134.49	142.54	151.29	161.39	169.60	169.74	172.06
<i>Inflation</i>	3.52	5.99	6.14	6.68	5.44	5.79	7.26
Food index	138.77	149.60	161.14	174.18	184.16	184.01	187.22
<i>Inflation</i>	2.09	7.80	7.71	8.09	6.44	6.97	9.03
Nonfood	130.40	135.80	141.90	149.20	155.72	156.14	157.62
<i>Inflation</i>	5.00	4.14	4.49	5.14	4.34	4.50	5.33

**Fig-1: Annual Inflation Rate**



**Fig-2: Monthly inflation Rate  
(Point to Point)**

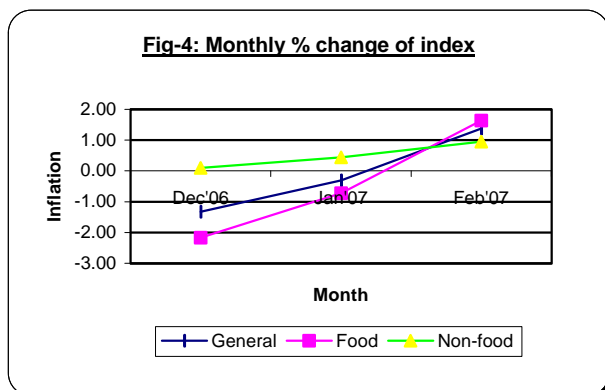
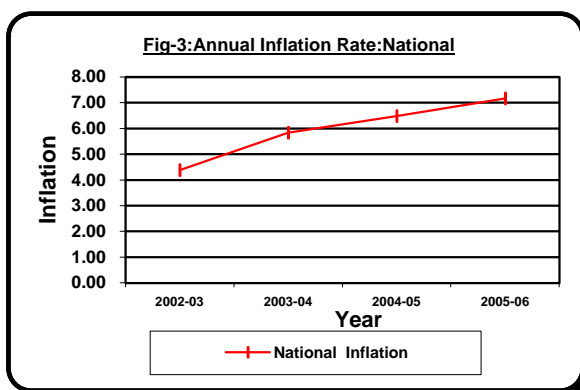


## Table 2 Consumer Price Index (CPI) : National

( 1995-96 = 100)

CPI Classification	2002-03	2003-04	2004-05	2005-06	2007		
					Dec	Jan	Feb
<b>General</b>	135.97 <i>4.38</i>	143.90 <i>5.83</i>	153.23 <i>6.48</i>	164.21 <i>7.17</i>	173.18 <i>-1.33</i>	172.65 <i>-0.31</i>	175.02 <i>1.37</i>
1. <b>Food</b> , beverage & tobacco	137.01 <i>3.46</i>	146.50 <i>6.93</i>	158.08 <i>7.90</i>	170.34 <i>7.76</i>	180.45 <i>-2.16</i>	179.15 <i>-0.72</i>	182.09 <i>1.64</i>
2. <b>Non-food</b> of which	135.13 <i>5.66</i>	141.03 <i>4.37</i>	147.14 <i>4.33</i>	156.56 <i>6.40</i>	163.99 <i>0.10</i>	164.72 <i>0.45</i>	166.28 <i>0.95</i>
I. Clothing & footwear	130.55 <i>4.76</i>	136.25 <i>4.37</i>	142.15 <i>4.38</i>	148.35 <i>4.36</i>	155.96 <i>0.03</i>	156.71 <i>0.48</i>	157.96 <i>0.80</i>
II. Gross rent, fuel & lighting	131.20 <i>5.00</i>	136.19 <i>3.80</i>	141.43 <i>2.52</i>	152.02 <i>7.49</i>	159.92 <i>0.05</i>	160.85 <i>0.58</i>	162.74 <i>1.18</i>
III. Furniture, furnishing, household equipments & operation	132.33 <i>4.97</i>	137.95 <i>4.25</i>	143.18 <i>3.79</i>	151.21 <i>5.61</i>	159.25 <i>0.45</i>	160.93 <i>1.05</i>	162.07 <i>0.71</i>
IV. Medical care & health expenses	145.25 <i>6.63</i>	154.36 <i>6.27</i>	162.47 <i>5.25</i>	169.62 <i>4.40</i>	177.32 <i>0.18</i>	177.68 <i>0.20</i>	179.59 <i>1.07</i>
V. Transport & communication	159.52 <i>10.50</i>	170.79 <i>7.06</i>	179.94 <i>5.36</i>	191.66 <i>6.51</i>	199.44 <i>0.03</i>	199.65 <i>0.11</i>	201.33 <i>0.84</i>
VI. Recreation, entertainment, education & cultural services	136.94 <i>4.51</i>	141.31 <i>3.19</i>	150.24 <i>6.32</i>	165.42 <i>10.10</i>	170.88 <i>0.08</i>	171.14 <i>0.15</i>	172.15 <i>0.59</i>
VII. Misc. goods & services	129.40 <i>4.80</i>	133.82 <i>3.42</i>	137.78 <i>2.96</i>	143.25 <i>3.97</i>	149.45 <i>0.24</i>	149.98 <i>0.35</i>	151.67 <i>1.13</i>

**Note :** Figures in italics indicate percentage change over previous year/month

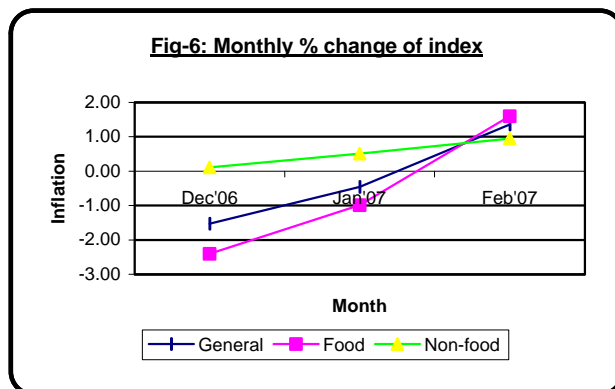
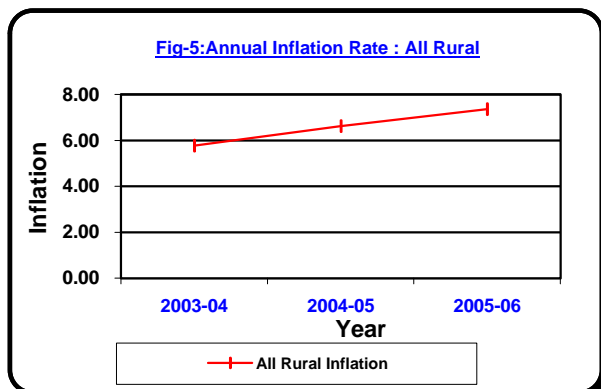


### Table 3 Consumer Price Index (CPI) : All Rural

( 1995-96 = 100)

CPI Classification	Weight	2003-04	2004-05	2005-06	2007		
					Dec	Jan	Feb
<b>General</b>	100.00	144.46	154.03	165.37	174.65	173.85	176.23
		<i>5.77</i>	<i>6.62</i>	<i>7.36</i>	<i>-1.53</i>	<i>-0.46</i>	<i>1.36</i>
1. <b>Food</b> , beverage & tobacco	62.96	145.22	156.82	168.77	178.92	177.15	179.99
		<i>6.55</i>	<i>7.99</i>	<i>7.62</i>	<i>-2.41</i>	<i>-0.99</i>	<i>1.60</i>
2. <b>Non-food</b> of which	37.04	143.18	149.29	159.59	167.39	168.24	169.83
		<i>4.47</i>	<i>4.27</i>	<i>6.90</i>	<i>0.11</i>	<i>0.51</i>	<i>0.95</i>
I. Clothing & footwear	6.88	136.21	141.73	148.19	155.47	156.14	157.41
		<i>4.38</i>	<i>4.05</i>	<i>4.56</i>	<i>0.01</i>	<i>0.43</i>	<i>0.81</i>
II. Gross rent, fuel & lighting	14.69	141.79	147.64	160.63	169.24	170.51	172.52
		<i>4.26</i>	<i>4.13</i>	<i>8.80</i>	<i>0.06</i>	<i>0.75</i>	<i>1.18</i>
III. Furniture, furnishing, household equipments & operation	2.70	137.67	141.90	149.45	157.19	158.83	159.06
		<i>3.20</i>	<i>3.07</i>	<i>5.32</i>	<i>0.64</i>	<i>1.04</i>	<i>0.14</i>
IV. Medical care & health expenses	2.79	157.35	166.56	175.03	184.48	184.93	186.67
		<i>7.06</i>	<i>5.85</i>	<i>5.09</i>	<i>0.25</i>	<i>0.24</i>	<i>0.94</i>
V. Transport & communication	2.98	170.28	178.92	191.31	199.28	199.52	201.64
		<i>7.02</i>	<i>5.07</i>	<i>6.92</i>	<i>0.01</i>	<i>0.12</i>	<i>1.06</i>
VI. Recreation, entertainment, education & cultural services	3.20	144.28	153.78	168.85	174.14	174.24	175.48
		<i>3.06</i>	<i>6.58</i>	<i>9.80</i>	<i>0.09</i>	<i>0.06</i>	<i>0.71</i>
VII. Misc. goods & services	3.80	132.51	134.90	139.40	145.81	146.29	147.48
		<i>3.00</i>	<i>1.80</i>	<i>3.34</i>	<i>0.10</i>	<i>0.33</i>	<i>0.81</i>

**Note :** Figures in italics indicate percentage change over previous year/month

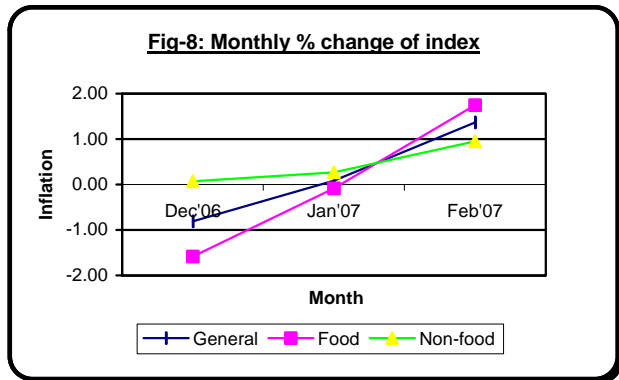
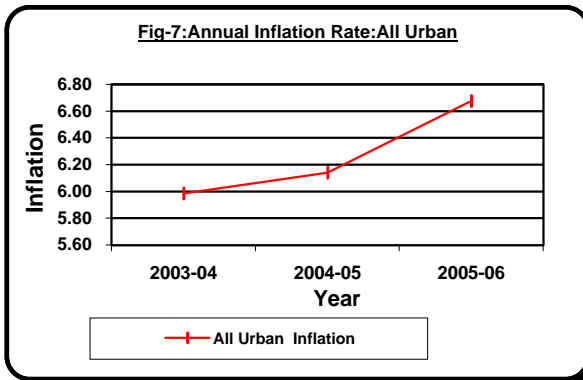


**Table 4 Consumer Price Index (CPI) : All Urban**

( 1995-96 = 100)

CPI Classification	Weight	2003-04	2004-05	2005-06	2007		
					Dec	Jan	Feb
<b>General</b>	100.00	142.54	151.29	161.39	169.60	169.74	172.06
		<i>5.99</i>	<i>6.14</i>	<i>6.68</i>	<i>-0.81</i>	<i>0.08</i>	<i>1.37</i>
1. <b>Food</b> , beverage & tobacco	48.80	149.60	161.14	174.18	184.16	184.01	187.22
		<i>7.80</i>	<i>7.71</i>	<i>8.09</i>	<i>-1.59</i>	<i>-0.08</i>	<i>1.74</i>
2. <b>Non-food</b> of which	51.20	135.80	141.90	149.20	155.72	156.14	157.62
		<i>4.14</i>	<i>4.49</i>	<i>5.14</i>	<i>0.07</i>	<i>0.27</i>	<i>0.95</i>
I. Clothing & footwear	6.79	136.37	143.18	148.72	157.14	158.10	159.30
		<i>4.35</i>	<i>4.99</i>	<i>3.87</i>	<i>0.09</i>	<i>0.61</i>	<i>0.76</i>
II. Gross rent, fuel & lighting	22.17	122.56	126.31	131.07	137.21	137.34	138.92
		<i>2.55</i>	<i>3.06</i>	<i>3.77</i>	<i>0.01</i>	<i>0.09</i>	<i>1.15</i>
III. Furniture, furnishing, household equipments & operation	2.58	138.61	146.30	155.49	164.27	166.06	169.40
		<i>6.85</i>	<i>5.55</i>	<i>6.28</i>	<i>0.01</i>	<i>1.09</i>	<i>2.01</i>
IV. Medical care & health expenses	2.97	147.08	152.49	156.47	159.90	160.01	162.36
		<i>4.28</i>	<i>3.68</i>	<i>2.61</i>	<i>0.01</i>	<i>0.07</i>	<i>1.47</i>
V. Transport & communication	7.07	172.02	182.41	192.53	199.82	199.95	200.57
		<i>7.16</i>	<i>6.04</i>	<i>5.55</i>	<i>0.08</i>	<i>0.07</i>	<i>0.31</i>
VI. Recreation, entertainment, education & cultural services	6.40	134.10	141.60	157.05	162.93	163.59	164.03
		<i>3.55</i>	<i>5.59</i>	<i>10.91</i>	<i>0.06</i>	<i>0.41</i>	<i>0.27</i>
VII. Misc. goods & services	3.22	137.01	144.80	152.62	158.31	158.95	161.89
		<i>4.41</i>	<i>5.69</i>	<i>5.40</i>	<i>0.56</i>	<i>0.40</i>	<i>1.85</i>

**Note :** Figures in italics indicate percentage change over previous year/month



**Table 5 Average Retail Prices (Open Market) Of Selected Commodities In Dhaka City  
During The Month Of February '07**

SL. No.	Item with specification	Unit	2005-2006	Dec'06	Jan'07	Feb'07
<b>I. Cereals :</b>						
1.	Rice (Fine)	Kg.	32.29	35.62	35.49	36.22
2.	Rice (Medium )	Kg.	25.16	25.50	25.19	25.89
3.	Rice (coarse)	Kg.	18.96	19.09	19.31	19.64
4.	Wheat (atta), white	Kg.	20.53	26.88	26.81	27.00
<b>II. Pulses :</b>						
5.	Moongdal (husked)	Kg.	58.19	71.58	71.36	70.86
6.	Masurdal (husked)	Kg.	53.40	69.34	70.00	70.00
<b>III. Sugar &amp; Gur :</b>						
7.	Sugar (white)	Kg.	47.32	40.96	38.65	37.01
8.	Gur (sugarcane)	Kg.	35.06	35.33	35.63	33.95
<b>IV. Protein Items :</b>						
9.	Fish-Rohu-cut piece	Kg.	179.31	179.69	180.83	181.34
10.	Fish-Hilsa,medium size	Kg.	253.36	288.20	293.30	300.40
11.	Chingri,about 3" long	Kg.	473.57	385.45	376.77	414.31
12.	Shingi, about 50 gram weight ea	Kg.	377.48	355.00	373.86	389.22
13.	Beef,best quality	Kg.	121.56	154.58	157.92	160.00
14.	Mutton, best quality	Kg.	184.54	216.87	223.54	225.11
15.	Fowl,alive	Kg.	137.55	154.38	155.42	158.70
16.	Eggs (Hen)	Hali of 4	17.83	20.35	20.19	20.89
17.	Eggs (Duck)	Hali of 4	16.43	19.18	18.60	19.50
<b>V. Edible oil :</b>						
18.	Mustard oil,best quality	Kg.	77.20	79.87	82.60	87.70
19.	Soyabean oil, best quality	Kg.	51.57	68.37	68.00	69.30
<b>VI. Spices :</b>						
20.	Chillies (dry), best quality	Kg.	75.85	171.13	179.37	182.96
21.	Onion	Kg.	25.25	25.29	15.51	18.31
22.	Garlic	Kg.	58.34	108.34	119.69	110.04
23.	Turmeric	Kg.	72.65	70.62	71.11	71.12
24.	Salt (fine)	Kg.	13.86	16.81	16.65	16.83

Contd.

**Table 5 Average Retail Prices (Open Market) Of Selected Commodities In Dhaka City  
During The Month Of February '07**

SL. No.	Item with specification	Unit	2005-2006	Dec'06	Jan'07	Feb'07
<b>VII. Vegetable :</b>						
25.	Potato, best quality	Kg.	11.78	19.46	12.07	12.08
26.	Brinjal, best quality	Kg.	20.82	20.58	16.94	18.05
27.	Lady's finger, best quality	Kg.	19.67	24.06	21.55	26.85
28.	Papaya (green)	Kg.	9.67	8.96	8.58	9.59
<b>VIII. Milk :</b>						
29.	Milk (fresh-cow)	Litre	29.35	30.27	30.68	30.50
30.	Lactozen (full cream)(400gm)	Each	234.34	278.08	278.12	278.30
<b>IX. Fuel &amp; lighting :</b>						
31.	Fire wood (gazari)	Quintal	368.92	385.00	387.00	390.00
32.	Kerosene (white)	Litre	34.58	39.00	39.00	39.00
33.	Matches (40 sticks)	Box	1.00	1.00	1.00	1.00
<b>X. Clothing :</b>						
34.	Longcloth (fine)	Metre	38.25	38.50	38.48	38.50
35.	Longcloth (med.)	Metre	36.07	37.00	37.00	37.00
36.	Saree (med.), white Tangail handloom:A451 80x80 count 5.5	Each	371.67	377.00	378.00	378.00
37.	Lungi (med.) 48" handloom 60X1	Each	191.96	217.50	216.00	217.00
38.	Undershirt (ganjee 36" seleevek	Each	49.17	50.00	50.00	52.00
<b>XI. Housing &amp; Household Requisites :</b>						
39.	Cement (local)	bag of 50 Kg	284.58	315.00	315.00	315.00
40.	Aluminium (Degchi)	Gram	0.26	0.33	0.35	0.35
41.	Bamboo (mul) about 30 feet lon	Each	32.00	33.00	33.00	33.00
42.	Enamel plate	Each	25.00	26.00	26.00	26.00
<b>XII. Miscellaneous :</b>						
43.	Cocanut oil (unscented, import	Kg.	161.67	168.00	168.00	168.29
44.	Cigarettes-Scissors	10 Sticks	NA	NA	NA	NA
45.	Cigarettes-Star	10 Sticks	10.18	12.13	12.08	12.08
46.	White paper	Quire	14.83	16.00	16.00	16.00
47.	Blade-Sword (stainless steel)	Each	2.00	2.00	2.00	2.00