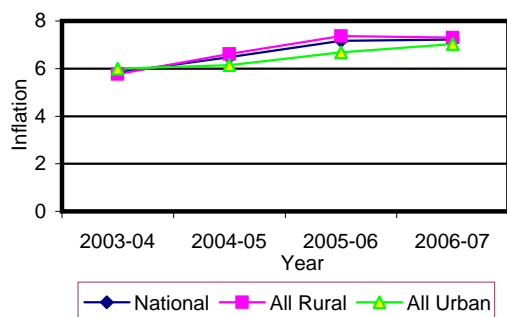


**Table 1 Consumer Price Index (CPI) And Inflation Rate
(Point To Point)**

(1995-96 = 100)

CPI Classification	2003-04	2004-05	2005-06	2006-07	2007		
					July	Aug	Sep
NATIONAL							
General index	143.90	153.23	164.21	176.06	186.66	188.24	190.70
<i>Inflation</i>	5.83	6.48	7.17	7.22	10.10	10.12	9.60
Food index	146.50	158.08	170.34	184.18	196.57	199.15	203.14
<i>Inflation</i>	6.93	7.91	7.76	8.12	11.42	11.62	11.10
Nonfood	141.03	147.14	156.56	165.79	174.12	174.31	174.55
<i>Inflation</i>	4.37	4.33	6.40	5.90	8.23	7.99	7.35
ALL RURAL							
General index	144.46	154.03	165.37	177.42	187.98	189.61	192.29
<i>Inflation</i>	5.77	6.62	7.36	7.30	10.10	10.07	9.60
Food index	145.22	156.82	168.77	182.18	193.81	196.29	200.38
<i>Inflation</i>	6.55	7.99	7.62	7.96	10.97	11.06	10.68
Nonfood	143.18	149.29	159.59	169.33	178.06	178.27	178.53
<i>Inflation</i>	4.47	4.27	6.90	6.10	8.54	8.29	7.61
ALL URBAN							
General index	142.54	151.29	161.39	172.73	183.44	184.90	186.82
<i>Inflation</i>	5.99	6.14	6.68	7.03	10.09	10.24	9.57
Food index	149.60	161.14	174.18	189.06	203.28	206.12	209.87
<i>Inflation</i>	7.80	7.71	8.09	8.54	12.46	12.94	12.09
Nonfood	135.80	141.90	149.20	157.17	164.53	164.68	164.85
<i>Inflation</i>	4.14	4.49	5.14	5.34	7.42	7.20	6.65

Fig-1: Annual Inflation Rate



**Fig-2: Monthly inflation Rate
(Point to Point)**

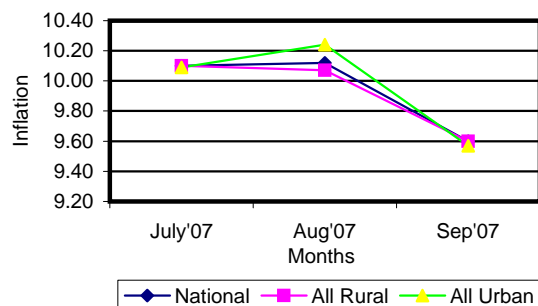


Table 2 Consumer Price Index (CPI) : National

(1995-96 = 100)

CPI Classification	2003-04	2004-05	2005-06	2006-07	2007		
					July	Aug	Sep
General	143.90	153.23	164.21	176.06	186.66	188.24	190.70
	<i>5.83</i>	<i>6.48</i>	<i>7.17</i>	<i>7.22</i>	<i>0.96</i>	<i>0.85</i>	<i>1.31</i>
1. Food , beverage & tobacco	146.50	158.08	170.34	184.18	196.57	199.15	203.14
	<i>6.93</i>	<i>7.90</i>	<i>7.76</i>	<i>8.12</i>	<i>1.23</i>	<i>1.31</i>	<i>2.00</i>
2. Non-food of which	141.03	147.14	156.56	165.79	174.12	174.31	174.55
	<i>4.37</i>	<i>4.33</i>	<i>6.40</i>	<i>5.90</i>	<i>0.54</i>	<i>0.11</i>	<i>0.14</i>
I. Clothing & footwear	136.25	142.15	148.35	156.79	162.45	162.56	163.27
	<i>4.37</i>	<i>4.38</i>	<i>4.36</i>	<i>5.69</i>	<i>0.69</i>	<i>0.07</i>	<i>0.44</i>
II. Gross rent, fuel & lighting	136.19	141.43	152.02	162.32	173.14	173.23	173.32
	<i>3.80</i>	<i>2.52</i>	<i>7.49</i>	<i>6.78</i>	<i>0.62</i>	<i>0.05</i>	<i>0.05</i>
III. Furniture, furnishing, household equipments & operation	137.95	143.18	151.21	162.61	174.15	174.22	174.40
	<i>4.25</i>	<i>3.79</i>	<i>5.61</i>	<i>7.54</i>	<i>0.58</i>	<i>0.04</i>	<i>0.10</i>
IV. Medical care & health expenses	154.36	162.47	169.62	178.49	184.46	184.57	184.57
	<i>6.27</i>	<i>5.25</i>	<i>4.40</i>	<i>5.23</i>	<i>0.28</i>	<i>0.06</i>	<i>0.00</i>
V. Transport & communication	170.79	179.94	191.66	201.15	209.49	209.74	209.82
	<i>7.06</i>	<i>5.36</i>	<i>6.51</i>	<i>4.95</i>	<i>0.50</i>	<i>0.12</i>	<i>0.04</i>
VI. Recreation, entertainment, education & cultural services	141.31	150.24	165.42	171.47	172.90	173.13	173.46
	<i>3.19</i>	<i>6.32</i>	<i>10.10</i>	<i>3.66</i>	<i>-0.03</i>	<i>0.13</i>	<i>0.19</i>
VII. Misc. goods & services	133.82	137.78	143.25	151.44	161.54	162.34	162.55
	<i>3.42</i>	<i>2.96</i>	<i>3.97</i>	<i>5.72</i>	<i>1.04</i>	<i>0.50</i>	<i>0.13</i>

Note : Figures in italics indicate percentage change over previous year/month

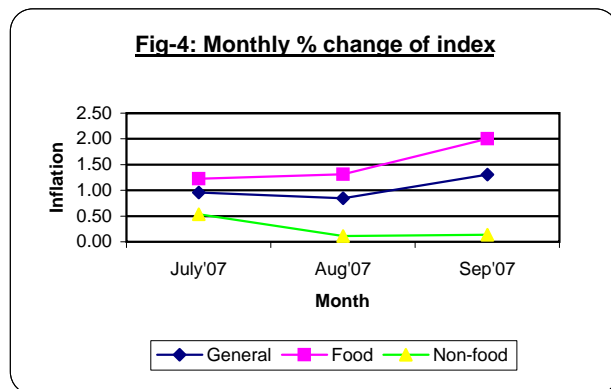
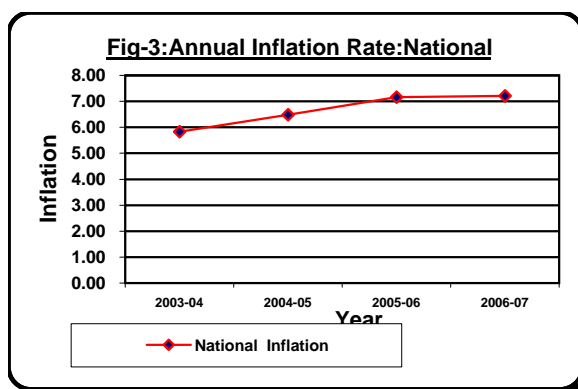


Table 3 Consumer Price Index (CPI) : All Rural

(1995-96 = 100)

CPI Classification	Weight	2004-05	2005-06	2006-07	2007		
					July	Aug	Sep
General	100.00	154.03	165.37	177.42	187.98	189.61	192.29
		<i>6.62</i>	<i>7.36</i>	<i>7.29</i>	<i>1.00</i>	<i>0.87</i>	<i>1.41</i>
1. Food , beverage & tobacco	62.96	156.82	168.77	182.18	193.81	196.29	200.38
		<i>7.99</i>	<i>7.62</i>	<i>7.95</i>	<i>1.24</i>	<i>1.28</i>	<i>2.08</i>
2. Non-food of which	37.04	149.29	159.59	169.33	178.06	178.27	178.53
		<i>4.27</i>	<i>6.90</i>	<i>6.10</i>	<i>0.57</i>	<i>0.12</i>	<i>0.15</i>
I. Clothing & footwear	6.88	141.73	148.19	155.88	160.38	160.38	161.08
		<i>4.05</i>	<i>4.56</i>	<i>5.19</i>	<i>0.67</i>	<i>0.00</i>	<i>0.44</i>
II. Gross rent, fuel & lighting	14.69	147.64	160.63	172.14	183.89	184.01	184.13
		<i>4.13</i>	<i>8.80</i>	<i>7.17</i>	<i>0.70</i>	<i>0.07</i>	<i>0.07</i>
III. Furniture, furnishing, household equipments & operation	2.70	141.90	149.45	160.38	171.43	171.51	171.74
		<i>3.07</i>	<i>5.32</i>	<i>7.31</i>	<i>0.11</i>	<i>0.05</i>	<i>0.13</i>
IV. Medical care & health expenses	2.79	166.56	175.03	185.41	191.11	191.21	191.21
		<i>5.85</i>	<i>5.09</i>	<i>5.93</i>	<i>0.07</i>	<i>0.05</i>	<i>0.00</i>
V. Transport & communication	2.98	178.92	191.31	201.06	210.41	210.64	210.70
		<i>5.07</i>	<i>6.92</i>	<i>5.10</i>	<i>0.67</i>	<i>0.11</i>	<i>0.03</i>
VI. Recreation, entertainment, education & cultural services	3.20	153.78	168.85	174.74	176.04	176.36	176.72
		<i>6.58</i>	<i>9.80</i>	<i>3.49</i>	<i>0.05</i>	<i>0.18</i>	<i>0.20</i>
VII. Misc. goods & services	3.80	134.90	139.40	147.95	159.05	160.01	160.23
		<i>1.80</i>	<i>3.34</i>	<i>6.13</i>	<i>1.00</i>	<i>0.60</i>	<i>0.14</i>

Note : Figures in italics indicate percentage change over previous year/month

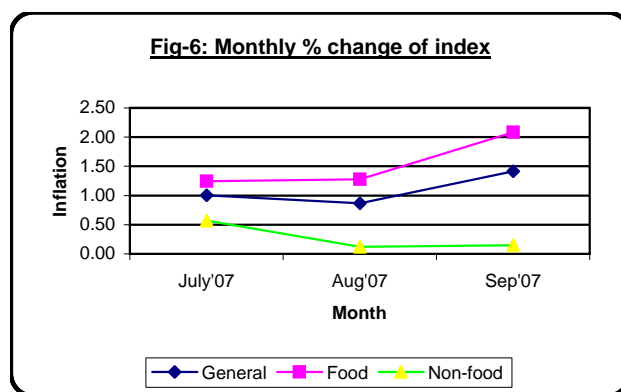
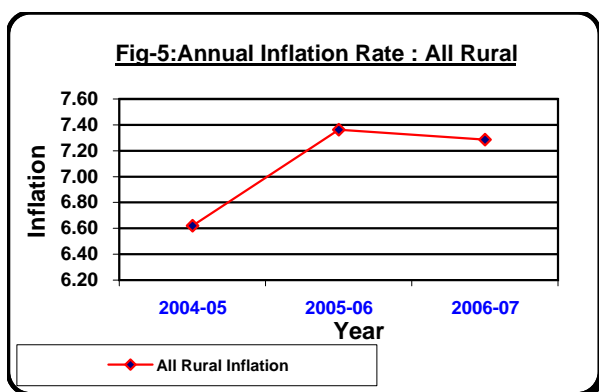


Table 4 Consumer Price Index (CPI) : All Urban

(1995-96 = 100)

CPI Classification	Weight	2004-05	2005-06	2006-07	2007		
					July	Aug	Sep
General	100.00	151.29	161.39	172.73	183.44	184.90	186.82
		<i>6.14</i>	<i>6.68</i>	<i>7.03</i>	<i>0.84</i>	<i>0.80</i>	<i>1.04</i>
1. Food , beverage & tobacco	48.80	161.14	174.18	189.06	203.28	206.12	209.87
		<i>7.71</i>	<i>8.09</i>	<i>8.54</i>	<i>1.17</i>	<i>1.40</i>	<i>1.82</i>
2. Non-food of which	51.20	141.90	149.20	157.17	164.53	164.68	164.85
		<i>4.49</i>	<i>5.14</i>	<i>5.34</i>	<i>0.45</i>	<i>0.09</i>	<i>0.10</i>
I. Clothing & footwear	6.79	143.18	148.72	159.02	167.48	167.86	168.62
		<i>4.99</i>	<i>3.87</i>	<i>6.93</i>	<i>0.73</i>	<i>0.23</i>	<i>0.45</i>
II. Gross rent, fuel & lighting	22.17	126.31	131.07	138.41	146.95	146.99	147.01
		<i>3.06</i>	<i>3.77</i>	<i>5.60</i>	<i>0.37</i>	<i>0.03</i>	<i>0.01</i>
III. Furniture, furnishing, household equipments & operation	2.58	146.30	155.49	168.05	180.76	180.82	180.89
		<i>5.55</i>	<i>6.28</i>	<i>8.08</i>	<i>1.69</i>	<i>0.03</i>	<i>0.04</i>
IV. Medical care & health expenses	2.97	152.49	156.47	161.64	168.28	168.39	168.41
		<i>3.68</i>	<i>2.61</i>	<i>3.30</i>	<i>0.88</i>	<i>0.07</i>	<i>0.01</i>
V. Transport & communication	7.07	182.41	192.53	201.38	207.26	207.55	207.66
		<i>6.04</i>	<i>5.55</i>	<i>4.60</i>	<i>0.10</i>	<i>0.14</i>	<i>0.05</i>
VI. Recreation, entertainment, education & cultural services	6.40	141.60	157.05	163.51	165.27	165.28	165.52
		<i>5.59</i>	<i>10.91</i>	<i>4.11</i>	<i>-0.21</i>	<i>0.01</i>	<i>0.15</i>
VII. Misc. goods & services	3.22	144.80	152.62	159.93	167.60	168.02	168.21
		<i>5.69</i>	<i>5.40</i>	<i>4.79</i>	<i>1.13</i>	<i>0.25</i>	<i>0.11</i>

Note : Figures in italics indicate percentage change over previous year/month

