

**Table 1 Consumer Price Index (CPI) And Inflation Rate
(Point To Point)**

(1995-96 = 100)

CPI Classification	2002-03	2003-04	2004-05	2005-06	2007		
					Mar	April	May
NATIONAL							
General index	135.97	143.90	153.23	164.21	177.02	180.73	181.73
<i>Inflation</i>	4.38	5.83	6.48	7.17	7.43	8.28	8.05
Food index	137.01	146.50	158.08	170.34	184.72	189.14	190.15
<i>Inflation</i>	3.46	6.93	7.91	7.76	8.53	8.98	8.35
Nonfood	135.13	141.03	147.14	156.56	167.36	170.33	171.36
<i>Inflation</i>	5.66	4.37	4.33	6.40	5.76	7.35	7.77
ALL RURAL							
General index	136.58	144.46	154.03	165.37	178.43	182.08	182.88
<i>Inflation</i>	4.74	5.77	6.62	7.36	7.55	8.45	8.04
Food index	136.29	145.22	156.82	168.77	182.82	186.57	187.32
<i>Inflation</i>	4.05	6.55	7.99	7.62	8.5	8.79	7.98
Nonfood	137.06	143.18	149.29	159.59	170.98	174.44	175.34
<i>Inflation</i>	5.91	4.47	4.27	6.90	5.88	7.83	8.15
ALL URBAN							
General index	134.49	142.54	151.29	161.39	173.57	177.43	178.93
<i>Inflation</i>	3.52	5.99	6.14	6.68	7.12	7.86	8.08
Food index	138.77	149.60	161.14	174.18	189.33	195.4	197.05
<i>Inflation</i>	2.09	7.80	7.71	8.09	8.60	9.44	9.21
Nonfood	130.40	135.80	141.90	149.20	158.55	160.32	161.66
<i>Inflation</i>	5.00	4.14	4.49	5.14	5.47	6.09	6.78

Fig-1: Annual Inflation Rate

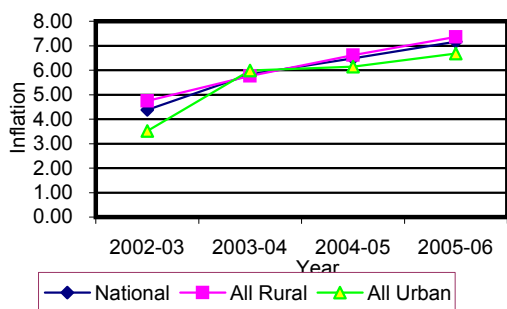


Fig-2: Monthly inflation Rate (Point to Point)

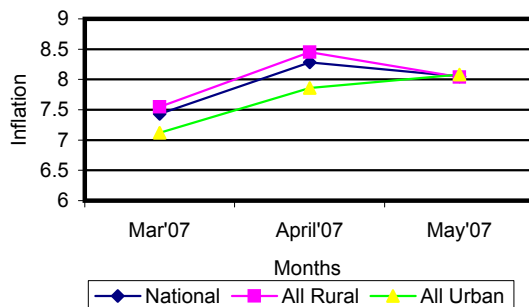


Table 2 Consumer Price Index (CPI) : National

(1995-96 = 100)

CPI Classification	2002-03	2003-04	2004-05	2005-06	2007		
					Mar	April	May
General	135.97	143.90	153.23	164.21	177.02	180.73	181.73
1. Food , beverage & tobacco	137.01	146.50	158.08	170.34	184.72	189.14	190.15
2. Non-food of which	135.13	141.03	147.14	156.56	167.36	170.33	171.36
I. Clothing & footwear	130.55	136.25	142.15	148.35	159.2	159.92	161.16
II. Gross rent, fuel & lighting	131.20	136.19	141.43	152.02	163.65	167.97	168.87
III. Furniture, furnishing, household equipments & operation	132.33	137.95	143.18	151.21	165.83	170.02	172.38
IV. Medical care & health expenses	145.25	154.36	162.47	169.62	180.65	181.62	181.96
V. Transport & communication	159.52	170.79	179.94	191.66	201.82	205.82	207.48
VI. Recreation, entertainment, education & cultural services	136.94	141.31	150.24	165.42	172.53	172.60	173.26
VII. Misc. goods & services	129.40	133.82	137.78	143.25	152.83	156.63	157.38

Note : Figures in italics indicate percentage change over previous year/month

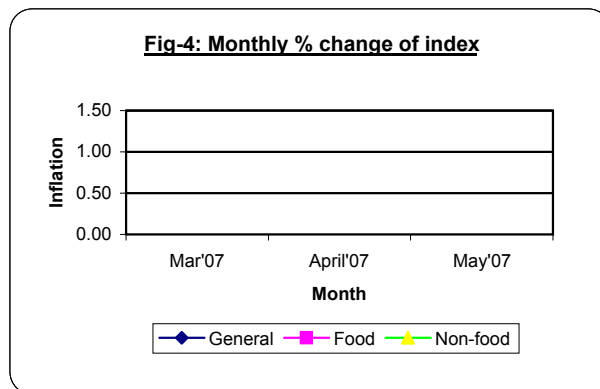
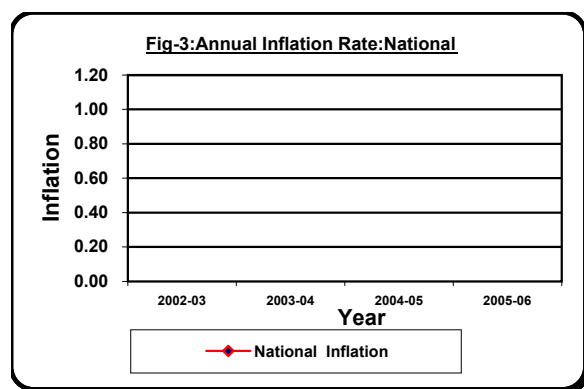


Table 3 Consumer Price Index (CPI) : All Rural

(1995-96 = 100)

CPI Classification	Weight	2003-04	2004-05	2005-06	2007		
					Mar	April	May
General	100.00	144.46	154.03	165.37	178.43	182.08	182.88
1. Food , beverage & tobacco	62.96	145.22	156.82	168.77	182.82	186.57	187.32
2. Non-food of which	37.04	143.18	149.29	159.59	170.98	174.44	175.34
I. Clothing & footwear	6.88	136.21	141.73	148.19	157.78	158.13	159.1
II. Gross rent, fuel & lighting	14.69	141.79	147.64	160.63	173.59	179.16	179.99
III. Furniture, furnishing, household equipments & operation	2.70	137.67	141.90	149.45	163.84	168.27	170.23
IV. Medical care & health expenses	2.79	157.35	166.56	175.03	187.83	188.39	188.55
V. Transport & communication	2.98	170.28	178.92	191.31	202.07	205.75	207.71
VI. Recreation, entertainment, education & cultural services	3.20	144.28	153.78	168.85	175.9	176.00	176.25
VII. Misc. goods & services	3.80	132.51	134.90	139.40	148.96	153.98	154.52

Note : Figures in italics indicate percentage change over previous year/month

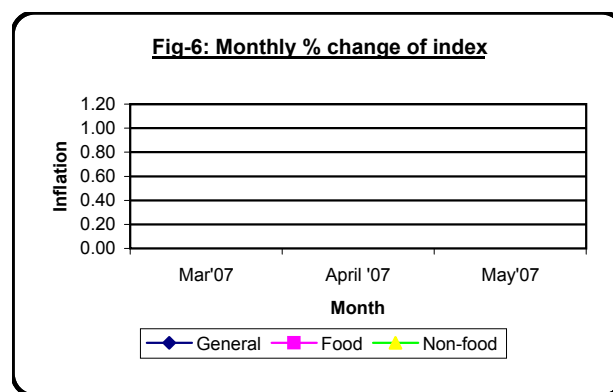
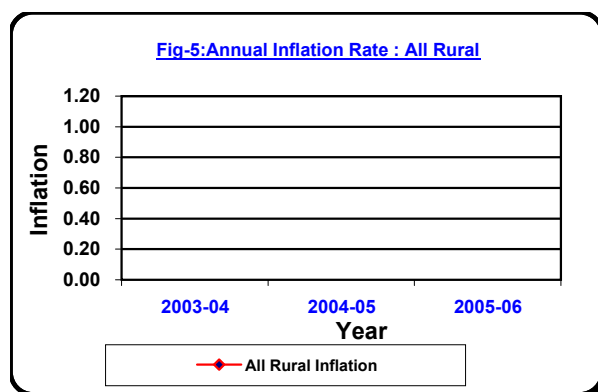


Table 4 Consumer Price Index (CPI) : All Urban

(1995-96 = 100)

CPI Classification	Weight	2003-04	2004-05	2005-06	2007		
					Mar	April	May
General	100.00	142.54	151.29	161.39	173.57	177.43	178.93
1. Food , beverage & tobacco	48.80	149.60	161.14	174.18	189.33	195.40	197.05
2. Non-food of which	51.20	135.80	141.90	149.20	158.55	160.32	161.66
I. Clothing & footwear	6.79	136.37	143.18	148.72	162.67	164.28	166.16
II. Gross rent, fuel & lighting	22.17	122.56	126.31	131.07	139.44	140.71	141.78
III. Furniture, furnishing, household equipments & operation	2.58	138.61	146.30	155.49	170.66	174.27	177.63
IV. Medical care & health expenses	2.97	147.08	152.49	156.47	163.18	165.13	165.91
V. Transport & communication	7.07	172.02	182.41	192.53	201.21	205.99	206.92
VI. Recreation, entertainment, education & cultural services	6.40	134.10	141.60	157.05	164.31	164.31	165.99
VII. Misc. goods & services	3.22	137.01	144.80	152.62	162.25	163.07	164.34

Note : Figures in italics indicate percentage change over previous year/month

