

**Table 1. Consumer Price Index (CPI) And Inflation Rate
(Point To Point)**

(1995-96 = 100)

CPI Classification	2004-05	2005-06	2006-07	2007-08	2009		
					Feb	Mar	April
NATIONAL							
General index	153.23	164.21	176.06	193.54	204.02	204.65	204.99
<i>Inflation</i>	6.48	7.17	7.22	9.93	5.81	5.04	5.36
Food index	158.08	170.34	184.18	206.79	217.88	217.95	217.68
<i>Inflation</i>	7.91	7.76	8.12	12.28	6.15	4.49	4.80
Nonfood	147.14	156.56	165.79	176.26	186.11	187.58	189.00
<i>Inflation</i>	4.33	6.40	5.90	6.32	5.33	6.11	6.53
ALL RURAL							
General index	154.03	165.37	177.42	195.14	206.03	206.35	206.29
<i>Inflation</i>	6.62	7.36	7.30	9.99	6.11	5.06	5.21
Food index	156.82	168.77	182.18	203.93	214.90	214.66	213.63
<i>Inflation</i>	7.99	7.62	7.96	11.94	6.28	4.33	4.32
Nonfood	149.29	159.59	169.33	180.19	190.94	192.23	193.81
<i>Inflation</i>	4.27	6.90	6.10	6.41	5.79	6.46	6.92
ALL URBAN							
General index	151.29	161.39	172.73	189.65	199.14	200.51	201.82
<i>Inflation</i>	6.14	6.68	7.03	9.80	5.08	5.00	5.72
Food index	161.14	174.18	189.06	213.73	225.15	225.95	227.55
<i>Inflation</i>	7.71	8.09	8.54	13.05	5.87	4.86	5.91
Nonfood	141.90	149.20	157.17	166.69	174.34	176.27	177.30
<i>Inflation</i>	4.49	5.14	5.34	6.06	4.12	5.19	5.50

Fig-1: Annual Inflation Rate

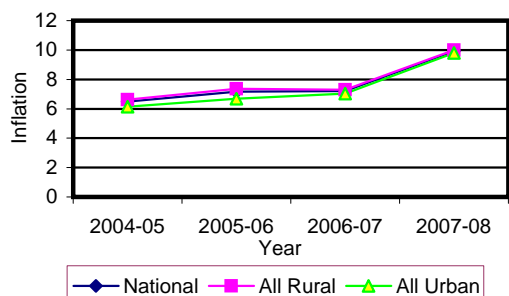


Fig-2: Monthly Inflation Rate (Point to Point)

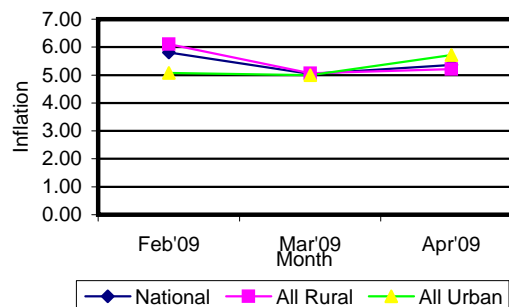


Table 2. Consumer Price Index (CPI) : National

(1995-96 = 100)

CPI Classification	2004-05	2005-06	2006-07	2007-08	2009		
					Feb	Mar	April
General	153.23 <i>6.48</i>	164.21 <i>7.17</i>	176.06 <i>7.22</i>	193.54 <i>9.93</i>	204.02 <i>-0.01</i>	204.65 <i>0.31</i>	204.99 <i>0.17</i>
1. Food , beverage & tobacco	158.08 <i>7.90</i>	170.34 <i>7.76</i>	184.18 <i>8.12</i>	206.79 <i>12.28</i>	217.88 <i>-0.31</i>	217.95 <i>0.03</i>	217.68 <i>-0.12</i>
2. Non-food of which	147.14 <i>4.33</i>	156.56 <i>6.40</i>	165.79 <i>5.90</i>	176.26 <i>6.32</i>	186.11 <i>0.49</i>	187.58 <i>0.79</i>	189.00 <i>0.76</i>
I. Clothing & footwear	142.15 <i>4.38</i>	148.35 <i>4.36</i>	156.79 <i>5.69</i>	164.53 <i>4.94</i>	173.89 <i>0.04</i>	175.75 <i>1.07</i>	176.33 <i>0.33</i>
II. Gross rent, fuel & lighting	141.43 <i>2.52</i>	152.02 <i>7.49</i>	162.32 <i>6.78</i>	174.7 <i>7.63</i>	182.78 <i>0.37</i>	183.19 <i>0.22</i>	183.51 <i>0.17</i>
III. Furniture, furnishing, household equipments & operation	143.18 <i>3.79</i>	151.21 <i>5.61</i>	162.61 <i>7.54</i>	178.56 <i>9.81</i>	195.53 <i>1.27</i>	200.03 <i>2.30</i>	201.93 <i>0.95</i>
IV. Medical care & health expenses	162.47 <i>5.25</i>	169.62 <i>4.40</i>	178.49 <i>5.23</i>	185.66 <i>4.02</i>	189.94 <i>0.36</i>	190.76 <i>0.43</i>	191.15 <i>0.20</i>
V. Transport & communication	179.94 <i>5.36</i>	191.66 <i>6.51</i>	201.15 <i>4.95</i>	211.01 <i>4.90</i>	221.32 <i>0.55</i>	224.48 <i>1.43</i>	224.70 <i>0.10</i>
VI. Recreation, entertainment, education & cultural services	150.24 <i>6.32</i>	165.42 <i>10.10</i>	171.47 <i>3.66</i>	174.86 <i>1.98</i>	180.38 <i>0.27</i>	181.25 <i>0.48</i>	185.86 <i>2.54</i>
VII. Misc. goods & services	137.78 <i>2.96</i>	143.25 <i>3.97</i>	151.44 <i>5.72</i>	166.69 <i>10.07</i>	189.99 <i>1.68</i>	192.65 <i>1.40</i>	198.58 <i>3.08</i>

Note : Figures in italics indicate percentage change over previous year/month

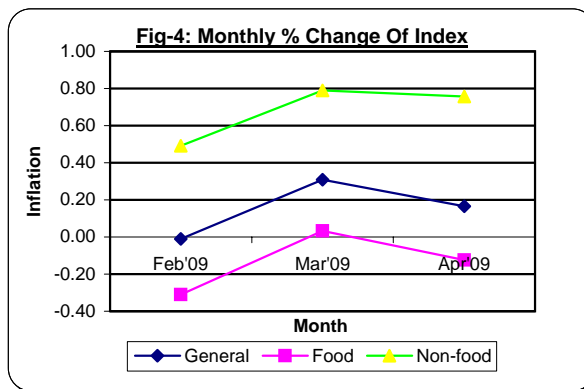
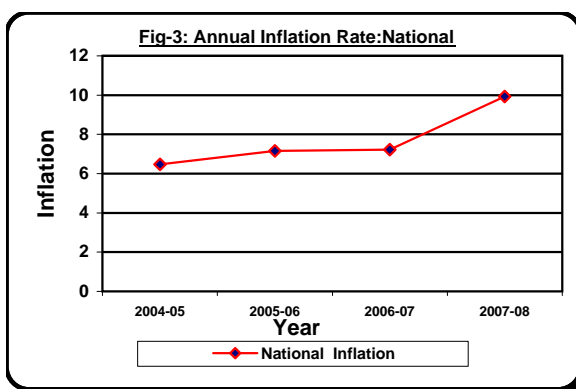


Table 3. Consumer Price Index (CPI) : All Rural

(1995-96 = 100)

CPI Classification	Weight	2005-06	2006-07	2007-08	2009		
					Feb	Mar	April
General	100.00	165.37	177.42	195.14	206.03	206.35	206.29
		7.36	7.29	9.99	-0.09	0.16	-0.03
1. Food , beverage & tobacco	62.96	168.77	182.18	203.93	214.90	214.66	213.63
		7.62	7.95	11.94	-0.36	-0.11	-0.48
2. Non-food of which	37.04	159.59	169.33	180.19	190.94	192.23	193.81
		6.90	6.10	6.41	0.43	0.68	0.82
I. Clothing & footwear	6.88	148.19	155.88	162.08	170.71	171.72	172.48
		4.56	5.19	3.98	0.02	0.59	0.44
II. Gross rent, fuel & lighting	14.69	160.63	172.14	185.85	197.13	197.61	197.90
		8.80	7.17	7.96	0.27	0.24	0.15
III. Furniture, furnishing, household equipments & operation	2.70	149.45	160.38	174.31	189.66	194.85	196.54
		5.32	7.31	8.69	1.24	2.74	0.87
IV. Medical care & health expenses	2.79	175.03	185.41	191.72	194.80	195.73	196.22
		5.09	5.93	3.40	0.07	0.48	0.25
V. Transport & communication	2.98	191.31	201.06	211.49	219.65	222.38	222.52
		6.92	5.10	5.19	0.70	1.24	0.06
VI. Recreation, entertainment, education & cultural services	3.20	168.85	174.74	178.03	183.62	183.93	188.92
		9.80	3.49	1.88	0.27	0.17	2.71
VII. Misc. goods & services	3.80	139.40	147.95	164.03	185.41	187.48	194.53
		3.34	6.13	10.87	1.31	1.12	3.76

Note : Figures in italics indicate percentage change over previous year/month

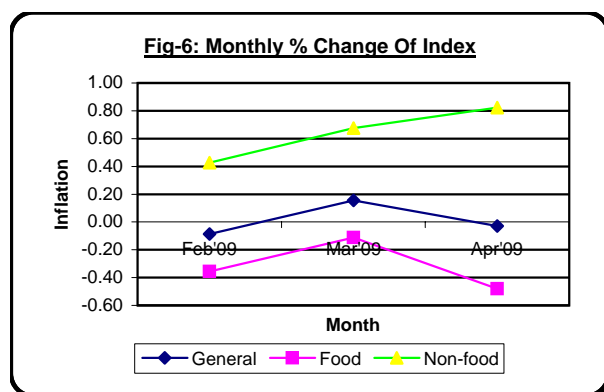
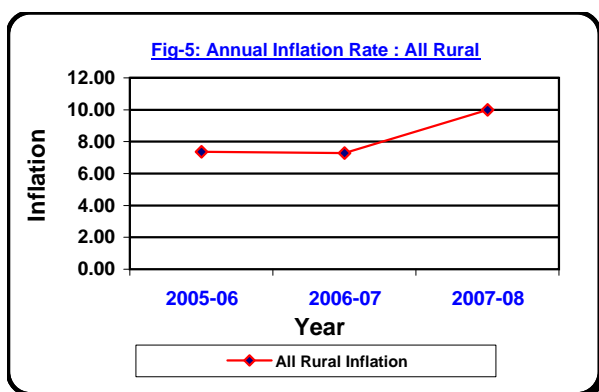


Table 4. Consumer Price Index (CPI) : All Urban

(1995-96 = 100)

CPI Classification	Weight	2005-06	2006-07	2007-08	2009		
					Feb	Mar	April
General	100.00	161.39	172.73	189.65	199.14	200.51	201.82
		6.68	7.03	9.80	0.19	0.69	0.65
1. Food , beverage & tobacco	48.80	174.18	189.06	213.73	225.15	225.95	227.55
		8.09	8.54	13.05	-0.20	0.36	0.71
2. Non-food of which	51.20	149.20	157.17	166.69	174.34	176.27	177.30
		5.14	5.34	6.06	0.65	1.11	0.58
I. Clothing & footwear	6.79	148.72	159.02	170.51	181.63	185.58	185.70
		3.87	6.93	7.23	0.10	2.17	0.06
II. Gross rent, fuel & lighting	22.17	131.07	138.41	147.54	147.85	148.09	148.48
		3.77	5.60	6.60	0.67	0.16	0.26
III. Furniture, furnishing, household equipments & operation	2.58	155.49	168.05	188.92	209.81	212.66	215.04
		6.28	8.08	12.42	1.33	1.36	1.12
IV. Medical care & health expenses	2.97	156.47	161.64	170.90	178.09	178.65	178.79
		2.61	3.30	5.73	1.15	0.31	0.08
V. Transport & communication	7.07	192.53	201.38	209.84	225.37	229.59	230.00
		5.55	4.60	4.20	0.18	1.87	0.18
VI. Recreation, entertainment, education & cultural services	6.40	157.05	163.51	167.16	172.50	174.71	178.42
		10.91	4.11	2.23	0.26	1.28	2.12
VII. Misc. goods & services	3.22	152.62	159.93	173.16	201.15	205.23	208.45
		5.40	4.79	8.27	2.52	2.03	1.57

Note : Figures in italics indicate percentage change over previous year/month

