

**Table 1. Consumer Price Index (CPI) And Inflation Rate
(Point To Point)**

(1995-96=100)

CPI Classification	2006-07	2007-08	2008-09	2007-2008/2008-09			2008-2009/2009-10		
				June	July	Aug	June	July	Aug
NATIONAL									
General index	176.06	193.54	206.43	203.45	206.86	207.27	208.02	214.01	216.99
<i>Inflation</i>	7.22	9.93	6.66	10.04	10.82	10.11	2.25	3.46	4.69
Food index	184.18	206.79	221.64	221.57	223.94	223.77	222.13	231.42	234.80
<i>Inflation</i>	8.12	12.28	7.18	14.10	13.92	12.36	0.25	3.34	4.93
Non-food index	165.79	176.26	186.67	179.32	184.44	185.72	189.98	191.33	194.16
<i>Inflation</i>	5.90	6.32	5.91	3.54	5.93	6.55	5.94	3.74	4.54
RURAL									
General index	177.42	195.14	208.46	205.27	209.01	209.53	209.64	215.71	218.43
<i>Inflation</i>	7.30	9.99	6.83	10.29	11.19	10.51	2.13	3.21	4.25
Food index	182.18	203.93	218.38	218.23	220.60	220.52	218.34	227.2	229.50
<i>Inflation</i>	7.96	11.94	7.09	14.00	13.82	12.34	0.05	2.99	4.07
Non-food index	169.33	180.19	191.59	183.25	189.31	190.84	194.85	196.17	199.62
<i>Inflation</i>	6.10	6.41	6.33	3.50	6.32	7.05	6.33	3.62	4.60
URBAN									
General index	172.73	189.65	201.49	199.02	201.62	201.75	204.09	209.87	213.48
<i>Inflation</i>	7.03	9.80	6.24	9.40	9.91	9.11	2.55	4.09	5.81
Food index	189.06	213.73	229.60	229.72	232.09	231.67	231.35	241.71	247.71
<i>Inflation</i>	8.54	13.05	7.43	14.33	14.17	12.40	0.71	4.14	6.92
Non-food index	157.17	166.69	174.69	169.76	172.57	173.24	178.11	179.53	180.85
<i>Inflation</i>	5.34	6.06	4.80	3.64	4.89	5.20	4.92	4.03	4.39

Fig-1: Annual Inflation Rate

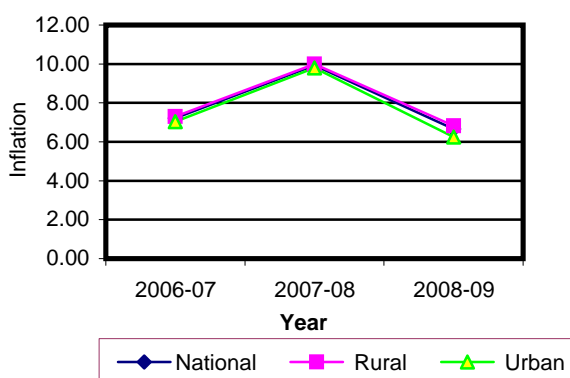


Fig-2: Monthly Inflation Rate

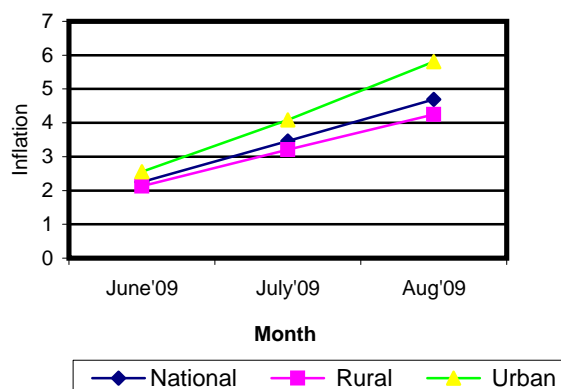


Table 2. Consumer Price Index (CPI) : National

(On Monthly Basis)

(1995-96=100)

CPI Classification	2006-07	2007-08	2008-09	2007-2008/2008-09			2008-2009/2009-10		
				June	July	Aug	June	July	Aug
General	176.06	193.54	206.43	203.45	206.86	207.27	208.02	214.01	216.99
	7.22	9.93	6.66	4.20	1.68	0.20	1.09	2.88	1.39
1. Food , beverage & tobacco	184.18	206.79	221.64	221.57	223.94	223.77	222.13	231.42	234.80
	8.12	12.28	7.18	6.29	1.07	-0.08	1.59	4.18	1.46
2. Non-food	165.79	176.26	186.67	179.32	184.44	185.72	189.98	191.33	194.16
	5.90	6.32	5.91	0.73	2.86	0.69	0.22	0.71	1.48
I. Clothing & footwear	156.79	164.53	173.10	167.58	168.56	168.92	176.77	177.20	177.99
	5.69	4.94	5.21	0.81	0.58	0.21	0.13	0.24	0.45
II. Gross rent, fuel & lighting	162.32	174.70	184.46	176.67	186.04	187.74	183.56	185.27	189.34
	6.78	7.63	5.59	0.33	5.30	0.91	0.02	0.93	2.20
III. Furniture, furnishing, household equipments & operation	162.61	178.56	194.75	184.27	186.10	189.43	204.04	208.21	210.21
	7.54	9.81	9.07	0.70	0.99	1.79	0.29	2.04	0.96
IV. Medical care & health expenses	178.49	185.66	189.25	187.25	187.78	187.9	191.16	193.35	197.40
	5.23	4.02	1.93	0.49	0.28	0.06	0.00	1.15	2.09
V. Transport & communication	201.15	211.01	222.12	213.37	219.90	220.50	226.64	227.44	231.53
	4.95	4.90	5.27	0.48	3.06	0.27	0.37	0.35	1.80
VI. Recreation, entertainment, education & cultural services	171.47	174.86	181.44	178.08	178.92	179.25	186.88	186.37	189.00
	3.66	1.98	3.76	0.81	0.47	0.18	0.44	0.27	1.41
VII. Misc. goods & services	151.44	166.69	188.84	174.99	177.66	180.02	203.02	204.24	205.36
	5.72	10.07	13.29	2.89	1.53	1.33	0.75	0.60	0.55

Note : Figures in italics indicate inflation over previous year/month

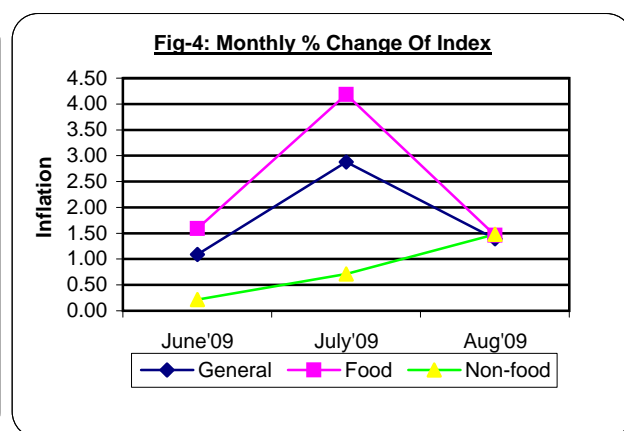
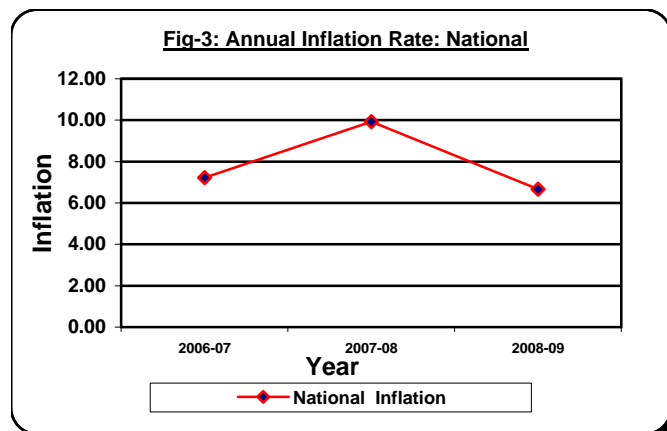


Table 3. Consumer Price Index (CPI) : Rural

(On Monthly Basis)

(1995-96=100)

CPI Classification	2006-07	2007-08	2008-09	2007-2008/2008-09			2008-2009/2009-10		
				June	July	Aug	June	July	Aug
General	177.42	195.14	208.46	205.27	209.01	209.53	209.64	215.71	218.43
	7.29	9.99	6.83	4.37	1.82	0.25	1.22	2.90	1.26
1. Food , beverage & tobacco	182.18	203.93	218.38	218.23	220.60	220.52	218.34	227.20	229.50
	7.95	11.94	7.09	6.23	1.09	-0.04	1.77	4.06	1.01
2. Non-food	169.33	180.19	191.59	183.25	189.31	190.84	194.85	196.17	199.62
	6.10	6.41	6.33	0.81	3.31	0.81	0.20	0.68	1.76
I. Clothing & footwear	155.88	162.08	169.68	164.88	165.85	166.18	172.90	173.47	174.20
	5.19	3.98	4.69	0.87	0.59	0.20	0.08	0.33	0.42
II. Gross rent, fuel & lighting	172.14	185.85	199.33	188.40	201.22	203.40	197.91	199.79	205.02
	7.17	7.96	7.25	0.42	6.80	1.08	0.00	0.95	2.62
III. Furniture, furnishing, household equipments & operation	160.38	174.31	189.12	178.01	179.88	183.81	198.74	203.21	203.42
	7.31	8.69	8.50	0.37	1.05	2.18	0.18	2.25	0.10
IV. Medical care & health expenses	185.41	191.72	194.47	192.92	193.21	193.26	196.23	197.57	202.22
	5.93	3.40	1.43	0.50	0.15	0.03	0.00	0.68	2.35
V. Transport & communication	201.06	211.49	219.63	213.22	216.72	217.31	223.89	224.43	229.88
	5.10	5.19	3.85	0.47	1.64	0.27	0.13	0.24	2.43
VI. Recreation, entertainment, education & cultural services	174.74	178.03	184.66	181.25	182.28	182.57	190.31	189.30	192.95
	3.49	1.88	3.72	1.07	0.57	0.16	0.60	0.53	1.93
VII. Misc. goods & services	147.95	164.03	184.85	170.98	174.00	176.33	200.02	200.86	202.02
	6.13	10.87	12.69	2.84	1.77	1.34	1.00	0.42	0.58

Note : Figures in italics indicate inflation over previous year/month

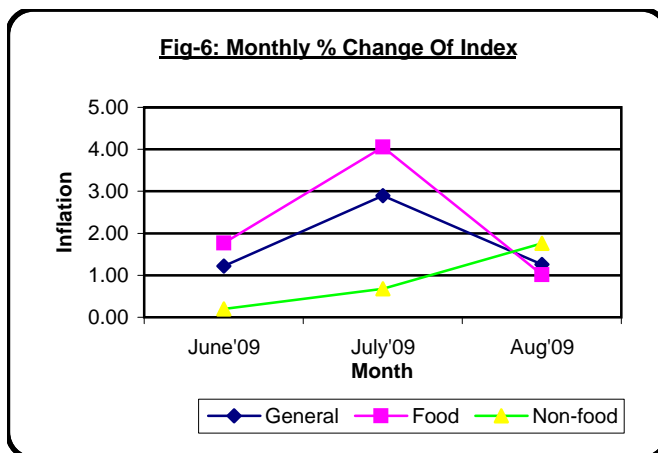
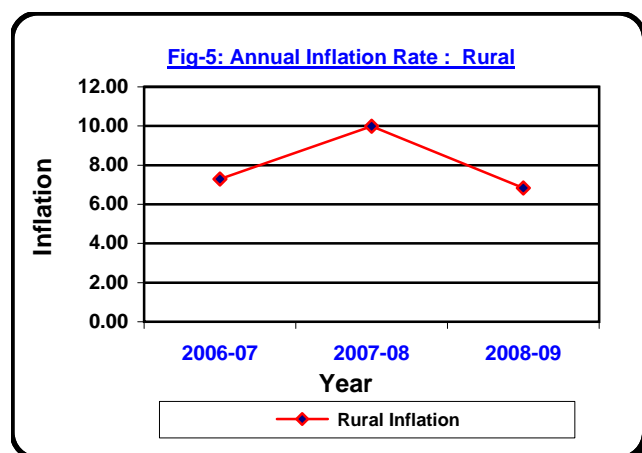


Table 4. Consumer Price Index (CPI) : Urban

(On Monthly Basis)

(1995-96=100)

CPI Classification	2006-07	2007-08	2008-09	2007-2008/2008-09			2008-2009/2009-10		
				June	July	Aug	June	July	Aug
General	172.73	189.65	201.49	199.02	201.62	201.75	204.09	209.87	213.48
	7.03	9.80	6.24	3.78	1.31	0.06	0.78	2.83	1.72
1. Food , beverage & tobacco	189.06	213.73	229.60	229.72	232.09	231.67	231.35	241.71	247.71
	8.54	13.05	7.43	6.45	1.03	-0.18	1.19	4.48	2.48
2. Non-food	157.17	166.69	174.69	169.76	172.57	173.24	178.11	179.53	180.85
	5.34	6.06	4.80	0.52	1.66	0.39	0.27	0.80	0.74
I. Clothing & footwear	159.02	170.51	181.42	174.15	175.17	175.58	186.18	186.30	187.23
	6.93	7.23	6.40	0.68	0.59	0.23	0.24	0.06	0.50
II. Gross rent, fuel & lighting	138.41	147.54	148.24	148.09	149.09	149.60	148.61	149.91	151.16
	5.60	6.60	0.47	0.03	0.68	0.34	0.07	0.87	0.83
III. Furniture, furnishing, household equipments & operation	168.05	188.92	208.46	199.51	201.26	203.12	216.93	220.39	226.75
	8.08	12.42	10.34	1.42	0.88	0.92	0.51	1.59	2.89
IV. Medical care & health expenses	161.64	170.90	176.54	173.43	174.54	174.83	178.82	183.08	185.66
	3.30	5.73	3.30	0.44	0.64	0.17	0.00	2.38	1.41
V. Transport & communication	201.38	209.84	228.18	213.75	227.66	228.26	233.34	234.77	235.54
	4.60	4.20	8.74	0.52	6.51	0.26	0.94	0.61	0.33
VI. Recreation, entertainment, education & cultural services	163.51	167.16	173.59	170.35	170.74	171.18	178.53	179.22	179.37
	4.11	2.23	3.85	0.14	0.23	0.26	0.00	0.39	0.08
VII. Misc. goods & services	159.93	173.16	198.58	184.77	186.58	189.01	210.33	212.48	213.51
	4.79	8.27	14.68	3.01	0.98	1.30	0.17	1.02	0.48

Note : Figures in italics indicate inflation over previous year/month

