

**Table 1. Consumer Price Index (CPI) And Inflation Rate
(Point To Point)**

(1995-96 = 100)

CPI Classification	2004-05	2005-06	2006-07	2007-08	2008		
					Oct	Nov	Dec
NATIONAL							
General index	153.23	164.21	176.06	193.54	209.31	207.14	204.90
<i>Inflation</i>	6.48	7.17	7.22	9.93	7.26	6.12	6.03
Food index	158.08	170.34	184.18	206.79	226.88	223.98	220.64
<i>Inflation</i>	7.91	7.76	8.12	12.28	8.08	6.68	6.83
Nonfood	147.14	156.56	165.79	176.26	186.13	184.95	184.29
<i>Inflation</i>	4.33	6.40	5.90	6.32	5.95	5.25	4.76
ALL RURAL							
General index	154.03	165.37	177.42	195.14	211.58	209.82	207.18
<i>Inflation</i>	6.62	7.36	7.30	9.99	7.31	6.40	6.26
Food index	156.82	168.77	182.18	203.93	223.71	221.45	217.79
<i>Inflation</i>	7.99	7.62	7.96	11.94	7.87	6.77	6.86
Nonfood	149.29	159.59	169.33	180.19	190.95	190.06	189.14
<i>Inflation</i>	4.27	6.90	6.10	6.41	6.21	5.68	5.10
ALL URBAN							
General index	151.29	161.39	172.73	189.65	203.77	200.63	199.36
<i>Inflation</i>	6.14	6.68	7.03	9.80	7.12	5.43	5.45
Food index	161.14	174.18	189.06	213.73	234.60	230.13	227.57
<i>Inflation</i>	7.71	8.09	8.54	13.05	8.59	6.48	6.74
Nonfood	141.90	149.20	157.17	166.69	174.38	172.52	172.48
<i>Inflation</i>	4.49	5.14	5.34	6.06	5.28	4.13	3.88

Fig-1: Annual Inflation Rate

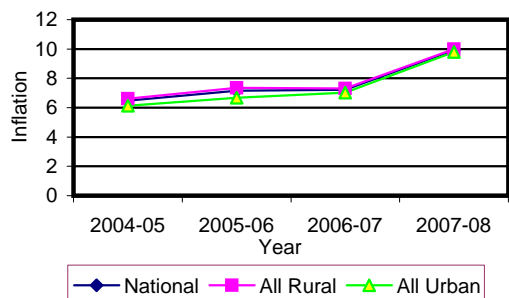


Fig-2: Monthly Inflation Rate (Point to Point)

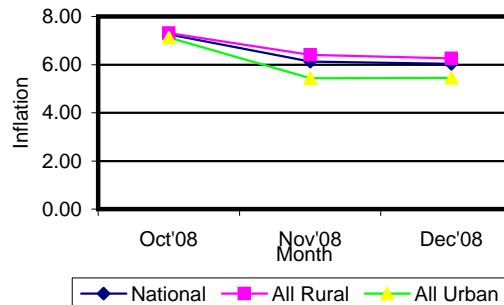


Table 2. Consumer Price Index (CPI) : National

(1995-96 = 100)

CPI Classification	2004-05	2005-06	2006-07	2007-08	2008		
					Oct	Nov	Dec
General	153.23 6.48	164.21 7.17	176.06 7.22	193.54 9.93	209.31 -0.39	207.14 -1.04	204.90 -1.08
1. Food , beverage & tobacco	158.08 7.90	170.34 7.76	184.18 8.12	206.79 12.28	226.88 -0.34	223.98 -1.28	220.64 -1.49
2. Non-food of which	147.14 4.33	156.56 6.40	165.79 5.90	176.26 6.32	186.13 -0.52	184.95 -0.63	184.29 -0.36
I. Clothing & footwear	142.15 4.38	148.35 4.36	156.79 5.69	164.53 4.94	171.50 0.08	171.74 0.14	171.98 0.14
II. Gross rent, fuel & lighting	141.43 2.52	152.02 7.49	162.32 6.78	174.7 7.63	186.45 -1.40	183.70 -1.47	181.80 -1.03
III. Furniture, furnishing, household equipments & operation	143.18 3.79	151.21 5.61	162.61 7.54	178.56 9.81	190.70 0.07	190.79 0.05	191.34 0.29
IV. Medical care & health expenses	162.47 5.25	169.62 4.40	178.49 5.23	185.66 4.02	187.96 0.02	187.98 0.01	188.03 0.03
V. Transport & communication	179.94 5.36	191.66 6.51	201.15 4.95	211.01 4.90	221.03 0.04	220.18 -0.38	219.86 -0.15
VI. Recreation, entertainment, education & cultural services	150.24 6.32	165.42 10.10	171.47 3.66	174.86 1.98	179.64 0.03	179.69 0.03	179.84 0.08
VII. Misc. goods & services	137.78 2.96	143.25 3.97	151.44 5.72	166.69 10.07	183.84 0.23	184.06 0.12	184.53 0.26

Note : Figures in italics indicate percentage change over previous year/month

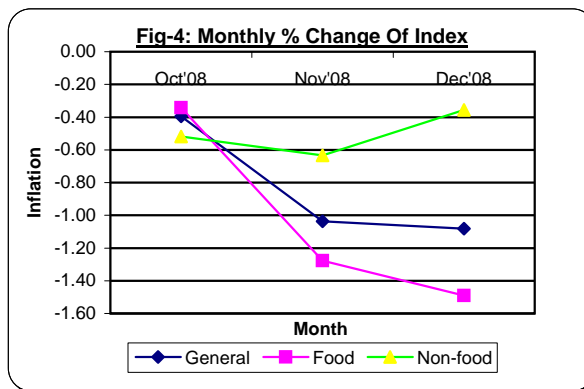
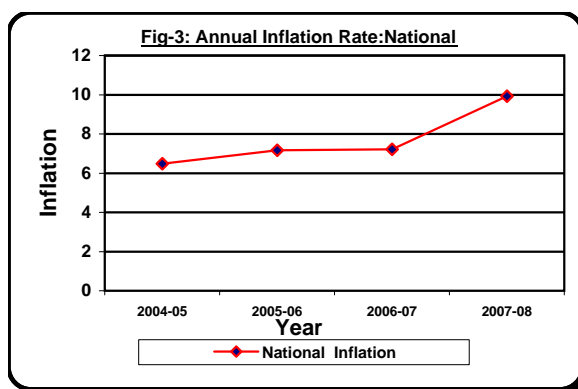


Table 3. Consumer Price Index (CPI) : All Rural

(1995-96 = 100)

CPI Classification	Weight	2005-06	2006-07	2007-08	2008		
					Oct	Nov	Dec
General	100.00	165.37	177.42	195.14	211.58	209.82	207.18
		7.36	7.29	9.99	-0.54	-0.83	-1.26
1. Food , beverage & tobacco	62.96	168.77	182.18	203.93	223.71	221.45	217.79
		7.62	7.95	11.94	-0.44	-1.01	-1.65
2. Non-food of which	37.04	159.59	169.33	180.19	190.95	190.06	189.14
		6.90	6.10	6.41	-0.74	-0.47	-0.48
I. Clothing & footwear	6.88	148.19	155.88	162.08	167.97	168.29	168.51
		4.56	5.19	3.98	-0.05	0.19	0.13
II. Gross rent, fuel & lighting	14.69	160.63	172.14	185.85	201.58	199.07	196.46
		8.80	7.17	7.96	-1.77	-1.25	-1.31
III. Furniture, furnishing, household equipments & operation	2.70	149.45	160.38	174.31	184.94	185.04	185.40
		5.32	7.31	8.69	0.04	0.05	0.19
IV. Medical care & health expenses	2.79	175.03	185.41	191.72	193.30	193.31	193.38
		5.09	5.93	3.40	0.01	0.01	0.04
V. Transport & communication	2.98	191.31	201.06	211.49	217.80	217.94	217.91
		6.92	5.10	5.19	0.02	0.06	-0.01
VI. Recreation, entertainment, education & cultural services	3.20	168.85	174.74	178.03	183.00	183.03	183.05
		9.80	3.49	1.88	0.03	0.02	0.01
VII. Misc. goods & services	3.80	139.40	147.95	164.03	179.68	179.82	180.35
		3.34	6.13	10.87	0.10	0.08	0.29

Note : Figures in italics indicate percentage change over previous year/month

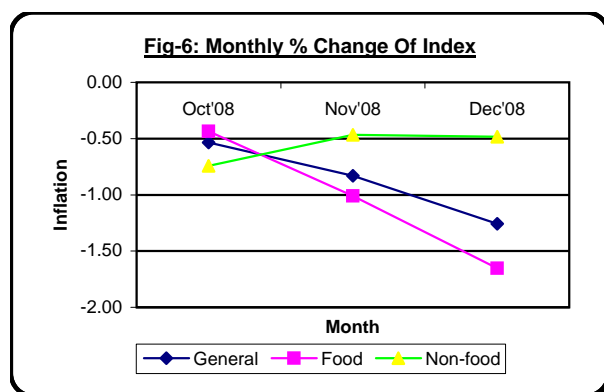
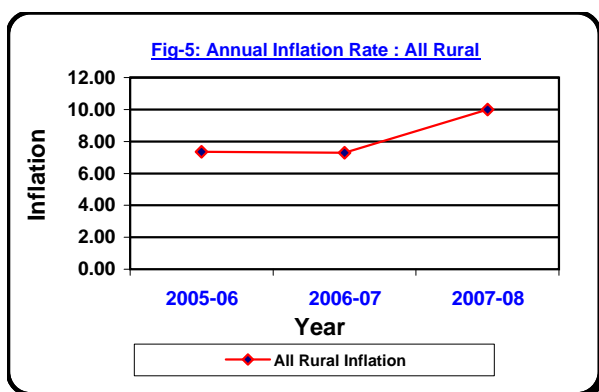


Table 4. Consumer Price Index (CPI) : All Urban

(1995-96 = 100)

CPI Classification	Weight	2005-06	2006-07	2007-08	2008		
					Oct	Nov	Dec
General	100.00	161.39	172.73	189.65	203.77	200.63	199.36
		6.68	7.03	9.80	-0.04	-1.54	-0.63
1. Food , beverage & tobacco	48.80	174.18	189.06	213.73	234.60	230.13	227.57
		8.09	8.54	13.05	-0.13	-1.91	-1.11
2. Non-food of which	51.20	149.20	157.17	166.69	174.38	172.52	172.48
		5.14	5.34	6.06	0.07	-1.07	-0.02
I. Clothing & footwear	6.79	148.72	159.02	170.51	180.09	180.13	180.44
		3.87	6.93	7.23	0.38	0.02	0.17
II. Gross rent, fuel & lighting	22.17	131.07	138.41	147.54	149.62	146.27	146.11
		3.77	5.60	6.60	-0.13	-2.24	-0.11
III. Furniture, furnishing, household equipments & operation	2.58	155.49	168.05	188.92	204.73	204.78	205.81
		6.28	8.08	12.42	0.12	0.02	0.50
IV. Medical care & health expenses	2.97	156.47	161.64	170.90	174.97	174.99	175.01
		2.61	3.30	5.73	0.05	0.01	0.01
V. Transport & communication	7.07	192.53	201.38	209.84	228.88	225.62	224.60
		5.55	4.60	4.20	0.07	-1.42	-0.45
VI. Recreation, entertainment, education & cultural services	6.40	157.05	163.51	167.16	171.46	171.54	172.01
		10.91	4.11	2.23	0.04	0.05	0.27
VII. Misc. goods & services	3.22	152.62	159.93	173.16	193.97	194.38	194.70
		5.40	4.79	8.27	0.53	0.21	0.16

Note : Figures in italics indicate percentage change over previous year/month

