

**Table 1. Consumer Price Index (CPI) And Inflation Rate
(Point To Point)**

(1995-96 = 100)

CPI Classification	2004-05	2005-06	2006-07	2007-08	2009		
					Dec	Jan	Feb
NATIONAL							
General index	153.23	164.21	176.06	193.54	204.90	204.04	204.02
<i>Inflation</i>	6.48	7.17	7.22	9.93	6.03	6.06	5.81
Food index	158.08	170.34	184.18	206.79	220.64	218.56	217.88
<i>Inflation</i>	7.91	7.76	8.12	12.28	6.83	6.83	6.15
Nonfood	147.14	156.56	165.79	176.26	184.29	185.20	186.11
<i>Inflation</i>	4.33	6.40	5.90	6.32	4.76	4.88	5.33
ALL RURAL							
General index	154.03	165.37	177.42	195.14	207.18	206.21	206.03
<i>Inflation</i>	6.62	7.36	7.30	9.99	6.26	6.39	6.11
Food index	156.82	168.77	182.18	203.93	217.79	215.67	214.90
<i>Inflation</i>	7.99	7.62	7.96	11.94	6.86	6.92	6.28
Nonfood	149.29	159.59	169.33	180.19	189.14	190.13	190.94
<i>Inflation</i>	4.27	6.90	6.10	6.41	5.10	5.37	5.79
ALL URBAN							
General index	151.29	161.39	172.73	189.65	199.36	198.77	199.14
<i>Inflation</i>	6.14	6.68	7.03	9.80	5.45	5.24	5.08
Food index	161.14	174.18	189.06	213.73	227.57	225.59	225.15
<i>Inflation</i>	7.71	8.09	8.54	13.05	6.74	6.60	5.87
Nonfood	141.90	149.20	157.17	166.69	172.48	173.21	174.34
<i>Inflation</i>	4.49	5.14	5.34	6.06	3.88	3.58	4.12

Fig-1: Annual Inflation Rate

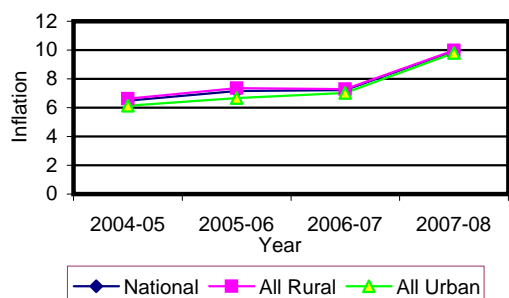


Fig-2: Monthly Inflation Rate
(Point to Point)

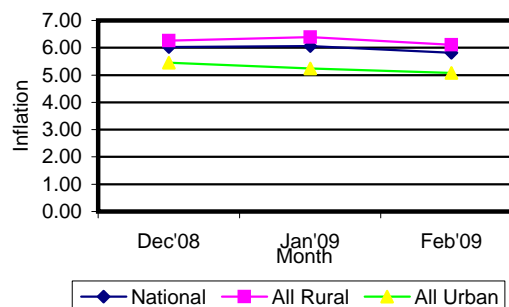


Table 2. Consumer Price Index (CPI) : National

(1995-96 = 100)

CPI Classification	2004-05	2005-06	2006-07	2007-08	2009		
					Dec	Jan	Feb
General	153.23 6.48	164.21 7.17	176.06 7.22	193.54 9.93	204.90 -1.08	204.04 -0.42	204.02 -0.01
1. Food , beverage & tobacco	158.08 7.90	170.34 7.76	184.18 8.12	206.79 12.28	220.64 -1.49	218.56 -0.94	217.88 -0.31
2. Non-food of which	147.14 4.33	156.56 6.40	165.79 5.90	176.26 6.32	184.29 -0.36	185.20 0.49	186.11 0.49
I. Clothing & footwear	142.15 4.38	148.35 4.36	156.79 5.69	164.53 4.94	171.98 0.14	173.82 1.07	173.89 0.04
II. Gross rent, fuel & lighting	141.43 2.52	152.02 7.49	162.32 6.78	174.7 7.63	181.80 -1.03	182.11 0.17	182.78 0.37
III. Furniture, furnishing, household equipments & operation	143.18 3.79	151.21 5.61	162.61 7.54	178.56 9.81	191.34 0.29	193.08 0.91	195.53 1.27
IV. Medical care & health expenses	162.47 5.25	169.62 4.40	178.49 5.23	185.66 4.02	188.03 0.03	189.25 0.65	189.94 0.36
V. Transport & communication	179.94 5.36	191.66 6.51	201.15 4.95	211.01 4.90	219.86 -0.15	220.12 0.12	221.32 0.55
VI. Recreation, entertainment, education & cultural services	150.24 6.32	165.42 10.10	171.47 3.66	174.86 1.98	179.84 0.08	179.90 0.03	180.38 0.27
VII. Misc. goods & services	137.78 2.96	143.25 3.97	151.44 5.72	166.69 10.07	184.53 0.26	186.85 1.26	189.99 1.68

Note : Figures in italics indicate percentage change over previous year/month

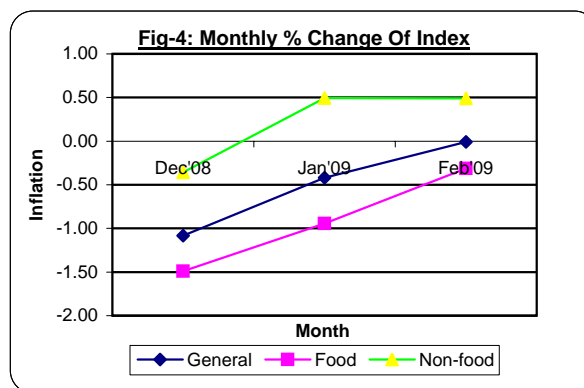
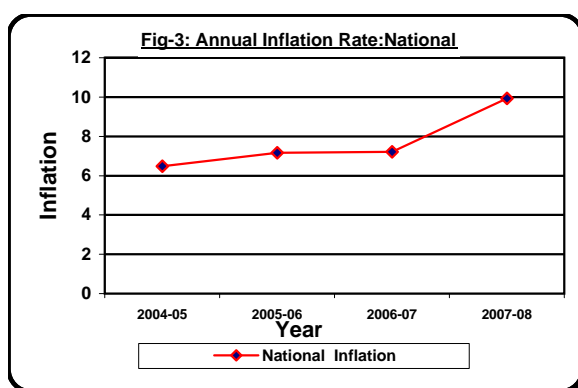
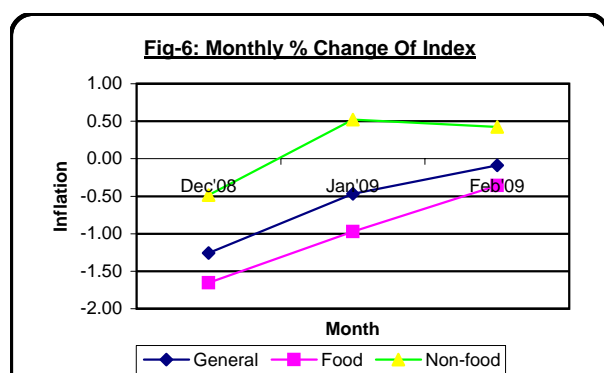
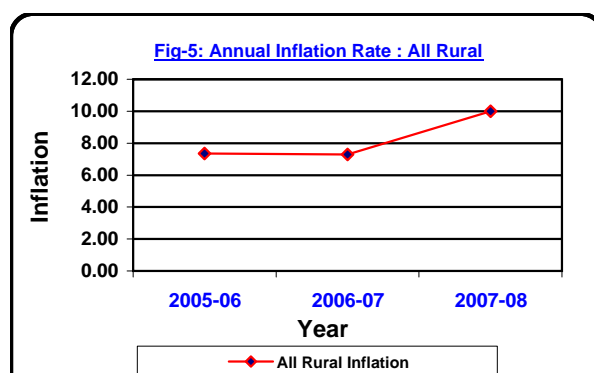


Table 3. Consumer Price Index (CPI) : All Rural

(1995-96 = 100)

CPI Classification	Weight	2005-06	2006-07	2007-08	2009		
					Dec	Jan	Feb
General	100.00	165.37	177.42	195.14	207.18	206.21	206.03
		7.36	7.29	9.99	-1.26	-0.47	-0.09
1. Food , beverage & tobacco	62.96	168.77	182.18	203.93	217.79	215.67	214.90
		7.62	7.95	11.94	-1.65	-0.97	-0.36
2. Non-food of which	37.04	159.59	169.33	180.19	189.14	190.13	190.94
		6.90	6.10	6.41	-0.48	0.52	0.43
I. Clothing & footwear	6.88	148.19	155.88	162.08	168.51	170.68	170.71
		4.56	5.19	3.98	0.13	1.29	0.02
II. Gross rent, fuel & lighting	14.69	160.63	172.14	185.85	196.46	196.59	197.13
		8.80	7.17	7.96	-1.31	0.07	0.27
III. Furniture, furnishing, household equipments & operation	2.70	149.45	160.38	174.31	185.40	187.34	189.66
		5.32	7.31	8.69	0.19	1.05	1.24
IV. Medical care & health expenses	2.79	175.03	185.41	191.72	193.38	194.66	194.80
		5.09	5.93	3.40	0.04	0.66	0.07
V. Transport & communication	2.98	191.31	201.06	211.49	217.91	218.13	219.65
		6.92	5.10	5.19	-0.01	0.10	0.70
VI. Recreation, entertainment, education & cultural services	3.20	168.85	174.74	178.03	183.05	183.12	183.62
		9.80	3.49	1.88	0.01	0.04	0.27
VII. Misc. goods & services	3.80	139.40	147.95	164.03	180.35	183.01	185.41
		3.34	6.13	10.87	0.29	1.47	1.31

Note : Figures in italics indicate percentage change over previous year/month



◆ All Rural Inflation

◆ General ◆ Food ◆ Non-food

Table 4. Consumer Price Index (CPI) : All Urban

(1995-96 = 100)

CPI Classification	Weight	2005-06	2006-07	2007-08	2009		
					Dec	Jan	Feb
General	100.00	161.39	172.73	189.65	199.36	198.77	199.14
		6.68	7.03	9.80	-0.63	-0.30	0.19
1. Food , beverage & tobacco	48.80	174.18	189.06	213.73	227.57	225.59	225.15
		8.09	8.54	13.05	-1.11	-0.87	-0.20
2. Non-food of which	51.20	149.20	157.17	166.69	172.48	173.21	174.34
		5.14	5.34	6.06	-0.02	0.42	0.65
I. Clothing & footwear	6.79	148.72	159.02	170.51	180.44	181.45	181.63
		3.87	6.93	7.23	0.17	0.56	0.10
II. Gross rent, fuel & lighting	22.17	131.07	138.41	147.54	146.11	146.86	147.85
		3.77	5.60	6.60	-0.11	0.51	0.67
III. Furniture, furnishing, household equipments & operation	2.58	155.49	168.05	188.92	205.81	207.05	209.81
		6.28	8.08	12.42	0.50	0.60	1.33
IV. Medical care & health expenses	2.97	156.47	161.64	170.90	175.01	176.06	178.09
		2.61	3.30	5.73	0.01	0.60	1.15
V. Transport & communication	7.07	192.53	201.38	209.84	224.60	224.96	225.37
		5.55	4.60	4.20	-0.45	0.16	0.18
VI. Recreation, entertainment, education & cultural services	6.40	157.05	163.51	167.16	172.01	172.05	172.50
		10.91	4.11	2.23	0.27	0.02	0.26
VII. Misc. goods & services	3.22	152.62	159.93	173.16	194.70	196.20	201.15
		5.40	4.79	8.27	0.16	0.77	2.52

Note : Figures in italics indicate percentage change over previous year/month

Fig-7: Annual Inflation Rate:All Urban

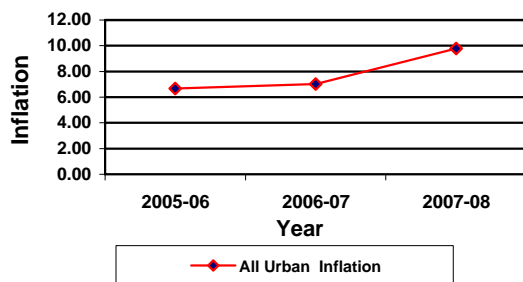


Fig-8: Monthly % Change Of Index

