

**Table 1. Consumer Price Index (CPI) And Inflation Rate  
(Point To Point)**

( 1995-96 = 100)

CPI Classification	2004-05	2005-06	2006-07	2007-08	2008		
					May	June	July
<b>NATIONAL</b>							
General index	153.23	164.21	176.06	193.54	195.25	203.45	206.86
<i>Inflation</i>	6.48	7.17	7.22	9.93	7.44	10.04	10.82
Food index	158.08	170.34	184.18	206.79	208.45	221.57	223.94
<i>Inflation</i>	7.91	7.76	8.12	12.28	9.62	14.10	13.92
Nonfood	147.14	156.56	165.79	176.26	178.02	179.32	184.44
<i>Inflation</i>	4.33	6.40	5.90	6.32	3.89	3.54	5.93
<b>ALL RURAL</b>							
General index	154.03	165.37	177.42	195.14	196.67	205.27	209.01
<i>Inflation</i>	6.62	7.36	7.30	9.99	7.54	10.29	11.19
Food index	156.82	168.77	182.18	203.93	205.43	218.23	220.60
<i>Inflation</i>	7.99	7.62	7.96	11.94	9.67	14.00	13.82
Nonfood	149.29	159.59	169.33	180.19	181.78	183.25	189.31
<i>Inflation</i>	4.27	6.90	6.10	6.41	3.67	3.50	6.32
<b>ALL URBAN</b>							
General index	151.29	161.39	172.73	189.65	191.78	199.02	201.62
<i>Inflation</i>	6.14	6.68	7.03	9.80	7.18	9.40	9.91
Food index	161.14	174.18	189.06	213.73	215.81	229.72	232.09
<i>Inflation</i>	7.71	8.09	8.54	13.05	9.52	14.33	14.17
Nonfood	141.90	149.20	157.17	166.69	168.88	169.76	172.57
<i>Inflation</i>	4.49	5.14	5.34	6.06	4.47	3.64	4.89

Fig-1: Annual Inflation Rate

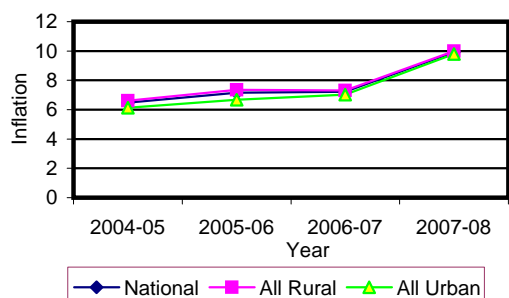
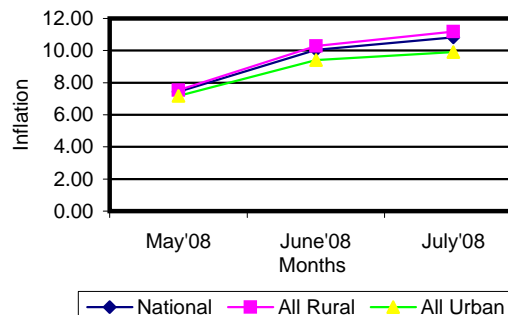


Fig-2: Monthly inflation Rate  
(Point to Point)

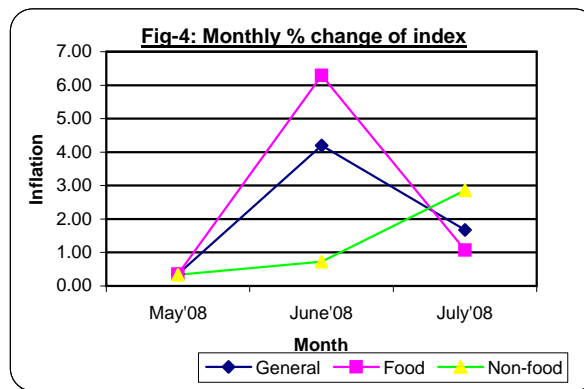
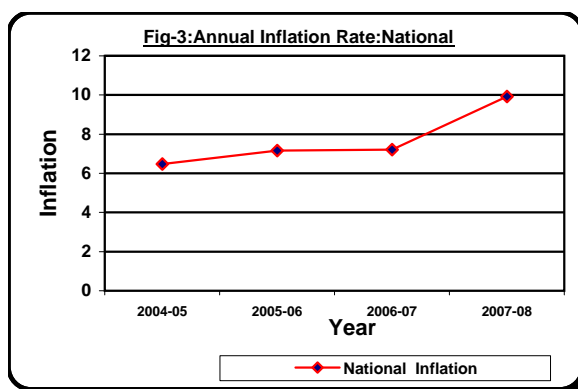


### Table 2. Consumer Price Index (CPI) : National

( 1995-96 = 100)

CPI Classification	2004-05	2005-06	2006-07	2007-08	2008		
					May	June	July
<b>General</b>	153.23 <i>6.48</i>	164.21 <i>7.17</i>	176.06 <i>7.22</i>	193.54 <i>9.93</i>	195.25 <i>0.35</i>	203.45 <i>4.20</i>	206.86 <i>1.68</i>
1. <b>Food</b> , beverage & tobacco	158.08 <i>7.90</i>	170.34 <i>7.76</i>	184.18 <i>8.12</i>	206.79 <i>12.28</i>	208.45 <i>0.36</i>	221.57 <i>6.29</i>	223.94 <i>1.07</i>
2. <b>Non-food</b> of which	147.14 <i>4.33</i>	156.56 <i>6.40</i>	165.79 <i>5.90</i>	176.26 <i>6.32</i>	178.02 <i>0.34</i>	179.32 <i>0.73</i>	184.44 <i>2.86</i>
I. Clothing & footwear	142.15 <i>4.38</i>	148.35 <i>4.36</i>	156.79 <i>5.69</i>	164.53 <i>4.94</i>	166.23 <i>0.59</i>	167.58 <i>0.81</i>	168.56 <i>0.58</i>
II. Gross rent, fuel & lighting	141.43 <i>2.52</i>	152.02 <i>7.49</i>	162.32 <i>6.78</i>	174.7 <i>7.63</i>	176.09 <i>0.19</i>	176.67 <i>0.33</i>	186.04 <i>5.30</i>
III. Furniture, furnishing, household equipments & operation	143.18 <i>3.79</i>	151.21 <i>5.61</i>	162.61 <i>7.54</i>	178.56 <i>9.81</i>	182.99 <i>0.91</i>	184.27 <i>0.70</i>	186.10 <i>0.99</i>
IV. Medical care & health expenses	162.47 <i>5.25</i>	169.62 <i>4.40</i>	178.49 <i>5.23</i>	185.66 <i>4.02</i>	186.34 <i>0.05</i>	187.25 <i>0.49</i>	187.78 <i>0.28</i>
V. Transport & communication	179.94 <i>5.36</i>	191.66 <i>6.51</i>	201.15 <i>4.95</i>	211.01 <i>4.90</i>	212.35 <i>0.22</i>	213.37 <i>0.48</i>	219.90 <i>3.06</i>
VI. Recreation, entertainment, education & cultural services	150.24 <i>6.32</i>	165.42 <i>10.10</i>	171.47 <i>3.66</i>	174.86 <i>1.98</i>	176.65 <i>0.25</i>	178.08 <i>0.81</i>	178.92 <i>0.47</i>
VII. Misc. goods & services	137.78 <i>2.96</i>	143.25 <i>3.97</i>	151.44 <i>5.72</i>	166.69 <i>10.07</i>	170.08 <i>0.78</i>	174.99 <i>2.89</i>	177.66 <i>1.53</i>

**Note :** Figures in italics indicate percentage change over previous year/month

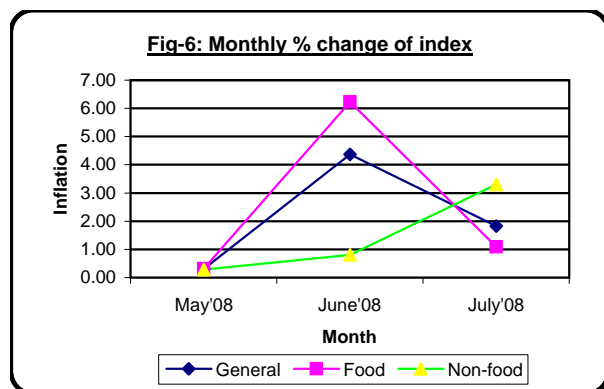
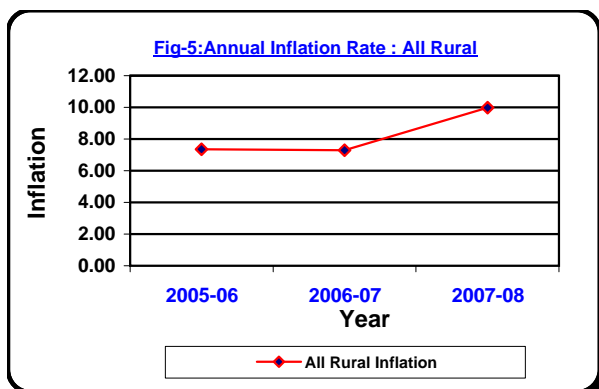


**Table 3. Consumer Price Index (CPI) : All Rural**

( 1995-96 = 100)

CPI Classification	Weight	2005-06	2006-07	2007-08	2008		
					May	June	July
<b>General</b>	100.00	165.37	177.42	195.14	196.67	205.27	209.01
		7.36	7.29	9.99	0.31	4.37	1.82
1. <b>Food</b> , beverage & tobacco	62.96	168.77	182.18	203.93	205.43	218.23	220.60
		7.62	7.95	11.94	0.32	6.23	1.09
2. <b>Non-food</b> of which	37.04	159.59	169.33	180.19	181.78	183.25	189.31
		6.90	6.10	6.41	0.29	0.81	3.31
I. Clothing & footwear	6.88	148.19	155.88	162.08	163.46	164.88	165.85
		4.56	5.19	3.98	0.34	0.87	0.59
II. Gross rent, fuel & lighting	14.69	160.63	172.14	185.85	187.61	188.40	201.22
		8.80	7.17	7.96	0.22	0.42	6.80
III. Furniture, furnishing, household equipments & operation	2.70	149.45	160.38	174.31	177.36	178.01	179.88
		5.32	7.31	8.69	1.11	0.37	1.05
IV. Medical care & health expenses	2.79	175.03	185.41	191.72	191.96	192.92	193.21
		5.09	5.93	3.40	0.01	0.50	0.15
V. Transport & communication	2.98	191.31	201.06	211.49	212.22	213.22	216.72
		6.92	5.10	5.19	0.10	0.47	1.64
VI. Recreation, entertainment, education & cultural services	3.20	168.85	174.74	178.03	179.33	181.25	182.28
		9.80	3.49	1.88	0.20	1.07	0.57
VII. Misc. goods & services	3.80	139.40	147.95	164.03	166.26	170.98	174.00
		3.34	6.13	10.87	0.36	2.84	1.77

**Note :** Figures in italics indicate percentage change over previous year/month



**Table 4. Consumer Price Index (CPI) : All Urban**

( 1995-96 = 100)

CPI Classification	Weight	2005-06	2006-07	2007-08	2008		
					May	June	July
<b>General</b>	100.00	161.39	172.73	189.65	191.78	199.02	201.62
		6.68	7.03	9.80	0.46	3.78	1.31
1. <b>Food</b> , beverage & tobacco	48.80	174.18	189.06	213.73	215.81	229.72	232.09
		8.09	8.54	13.05	0.45	6.45	1.03
2. <b>Non-food</b> of which	51.20	149.20	157.17	166.69	168.88	169.76	172.57
		5.14	5.34	6.06	0.49	0.52	1.66
I. Clothing & footwear	6.79	148.72	159.02	170.51	172.97	174.15	175.17
		3.87	6.93	7.23	1.18	0.68	0.59
II. Gross rent, fuel & lighting	22.17	131.07	138.41	147.54	148.05	148.09	149.09
		3.77	5.60	6.60	0.11	0.03	0.68
III. Furniture, furnishing, household equipments & operation	2.58	155.49	168.05	188.92	196.71	199.51	201.26
		6.28	8.08	12.42	0.49	1.42	0.88
IV. Medical care & health expenses	2.97	156.47	161.64	170.90	172.67	173.43	174.54
		2.61	3.30	5.73	0.16	0.44	0.64
V. Transport & communication	7.07	192.53	201.38	209.84	212.65	213.75	227.66
		5.55	4.60	4.20	0.50	0.52	6.51
VI. Recreation, entertainment, education & cultural services	6.40	157.05	163.51	167.16	170.12	170.35	170.74
		10.91	4.11	2.23	0.38	0.14	0.23
VII. Misc. goods & services	3.22	152.62	159.93	173.16	179.37	184.77	186.58
		5.40	4.79	8.27	1.75	3.01	0.98

**Note :** Figures in italics indicate percentage change over previous year/month

