

**Table 1. Consumer Price Index (CPI) And Inflation Rate
(Point To Point)**

(1995-96=100)

CPI Classification	2006-07	2007-08	2008-09	2007-2008/2008-09			2008-2009/2009-10		
				May	June	July	May	June	July
NATIONAL									
General index	176.06	193.54	206.43	195.25	203.45	206.86	205.78	208.02	214.01
<i>Inflation</i>	7.22	9.93	6.66	7.44	10.04	10.82	5.39	2.25	3.46
Food index	184.18	206.79	221.64	208.45	221.57	223.94	218.65	222.13	231.42
<i>Inflation</i>	8.12	12.28	7.18	9.62	14.10	13.92	4.89	0.25	3.34
Non-food index	165.79	176.26	186.67	178.02	179.32	184.44	189.57	189.98	191.33
<i>Inflation</i>	5.90	6.32	5.91	3.89	3.54	5.93	6.49	5.94	3.74
RURAL									
General index	177.42	195.14	208.46	196.67	205.27	209.01	207.12	209.64	215.71
<i>Inflation</i>	7.30	9.99	6.83	7.54	10.29	11.19	5.31	2.13	3.21
Food index	182.18	203.93	218.38	205.43	218.23	220.60	214.55	218.34	227.2
<i>Inflation</i>	7.96	11.94	7.09	9.67	14.00	13.82	4.44	0.05	2.99
Non-food index	169.33	180.19	191.59	181.78	183.25	189.31	194.47	194.85	196.17
<i>Inflation</i>	6.10	6.41	6.33	3.67	3.50	6.32	6.98	6.33	3.62
URBAN									
General index	172.73	189.65	201.49	191.78	199.02	201.62	202.52	204.09	209.87
<i>Inflation</i>	7.03	9.80	6.24	7.18	9.40	9.91	5.60	2.55	4.09
Food index	189.06	213.73	229.60	215.81	229.72	232.09	228.63	231.35	241.71
<i>Inflation</i>	8.54	13.05	7.43	9.52	14.33	14.17	5.94	0.71	4.14
Non-food index	157.17	166.69	174.69	168.88	169.76	172.57	177.63	178.11	179.53
<i>Inflation</i>	5.34	6.06	4.80	4.47	3.64	4.89	5.18	4.92	4.03

Fig-1: Annual Inflation Rate

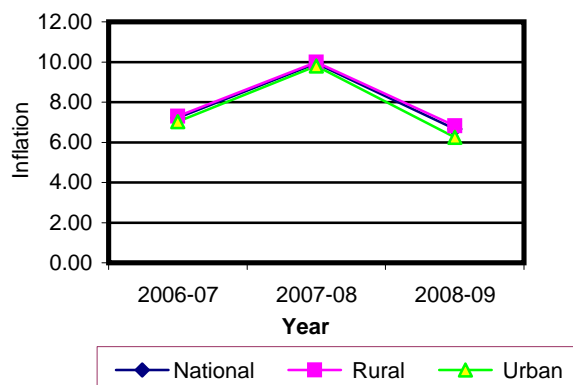


Fig-2: Monthly Inflation Rate

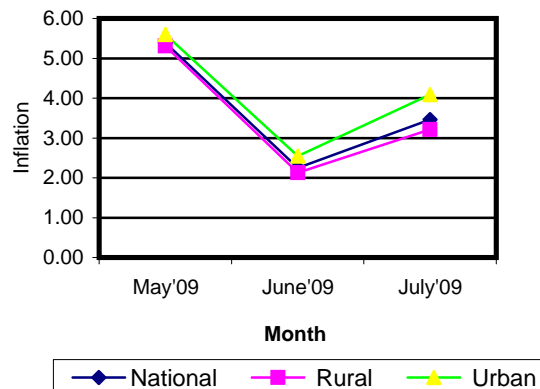


Table 2. Consumer Price Index (CPI) : National

(On Monthly Basis)

(1995-96=100)

CPI Classification	2006-07	2007-08	2008-09	2007-2008/2008-09			2008-2009/2009-10		
				May	June	July	May	June	July
General	176.06	193.54	206.43	195.25	203.45	206.86	205.78	208.02	214.01
	7.22	9.93	6.66	0.35	4.20	1.68	0.39	1.09	2.88
1. Food , beverage & tobacco	184.18	206.79	221.64	208.45	221.57	223.94	218.65	222.13	231.42
	8.12	12.28	7.18	0.36	6.29	1.07	0.45	1.59	4.18
2. Non-food	165.79	176.26	186.67	178.02	179.32	184.44	189.57	189.98	191.33
	5.90	6.32	5.91	0.34	0.73	2.86	0.30	0.22	0.71
I. Clothing & footwear	156.79	164.53	173.10	166.23	167.58	168.56	176.54	176.77	177.20
	5.69	4.94	5.21	0.59	0.81	0.58	0.12	0.13	0.24
II. Gross rent, fuel & lighting	162.32	174.70	184.46	176.09	176.67	186.04	183.53	183.56	185.27
	6.78	7.63	5.59	0.19	0.33	5.30	0.01	0.02	0.93
III. Furniture, furnishing, household equipments & operation	162.61	178.56	194.75	182.99	184.27	186.10	203.46	204.04	208.21
	7.54	9.81	9.07	0.91	0.70	0.99	0.76	0.29	2.04
IV. Medical care & health expenses	178.49	185.66	189.25	186.34	187.25	187.78	191.16	191.16	193.35
	5.23	4.02	1.93	0.05	0.49	0.28	0.01	0.00	1.15
V. Transport & communication	201.15	211.01	222.12	212.35	213.37	219.90	225.80	226.64	227.44
	4.95	4.90	5.27	0.22	0.48	3.06	0.49	0.37	0.35
VI. Recreation, entertainment, education & cultural services	171.47	174.86	181.44	176.65	178.08	178.92	186.07	186.88	186.37
	3.66	1.98	3.76	0.25	0.81	0.47	0.11	0.44	0.27
VII. Misc. goods & services	151.44	166.69	188.84	170.08	174.99	177.66	201.51	203.02	204.24
	5.72	10.07	13.29	0.78	2.89	1.53	1.48	0.75	0.60

Note : Figures in italics indicate inflation over previous year/month

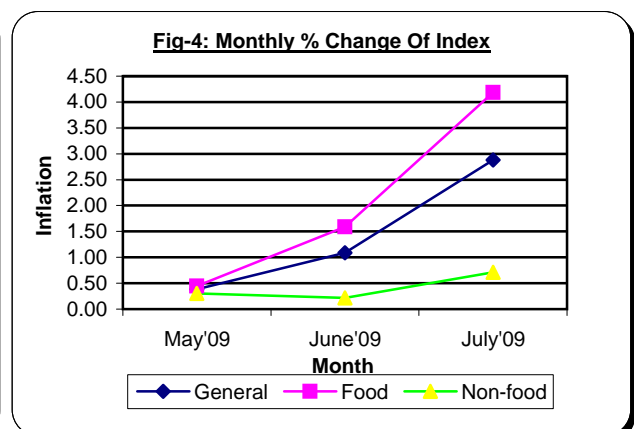
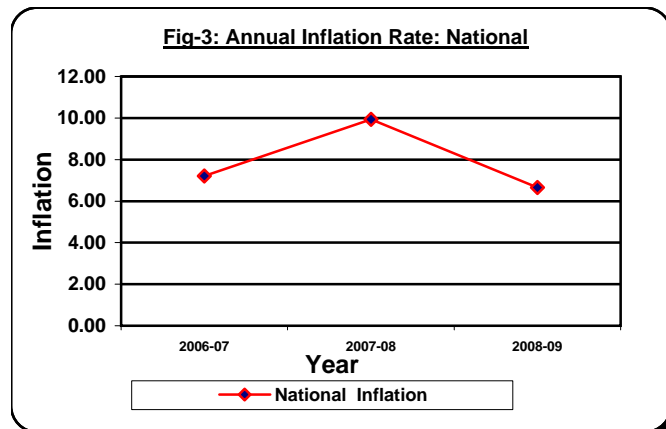


Table 3. Consumer Price Index (CPI) : Rural

(On Monthly Basis)

(1995-96=100)

CPI Classification	2006-07	2007-08	2008-09	2007-2008/2008-09			2008-2009/2009-10		
				May	June	July	May	June	July
General	177.42	195.14	208.46	196.67	205.27	209.01	207.12	209.64	215.71
	7.29	9.99	6.83	0.31	4.37	1.82	0.40	1.22	2.90
1. Food , beverage & tobacco	182.18	203.93	218.38	205.43	218.23	220.60	214.55	218.34	227.20
	7.95	11.94	7.09	0.32	6.23	1.09	0.43	1.77	4.06
2. Non-food	169.33	180.19	191.59	181.78	183.25	189.31	194.47	194.85	196.17
	6.10	6.41	6.33	0.29	0.81	3.31	0.34	0.20	0.68
I. Clothing & footwear	155.88	162.08	169.68	163.46	164.88	165.85	172.77	172.90	173.47
	5.19	3.98	4.69	0.34	0.87	0.59	0.17	0.08	0.33
II. Gross rent, fuel & lighting	172.14	185.85	199.33	187.61	188.40	201.22	197.91	197.91	199.79
	7.17	7.96	7.25	0.22	0.42	6.80	0.01	0.00	0.95
III. Furniture, furnishing, household equipments & operation	160.38	174.31	189.12	177.36	178.01	179.88	198.39	198.74	203.21
	7.31	8.69	8.50	1.11	0.37	1.05	0.94	0.18	2.25
IV. Medical care & health expenses	185.41	191.72	194.47	191.96	192.92	193.21	196.23	196.23	197.57
	5.93	3.40	1.43	0.01	0.50	0.15	0.01	0.00	0.68
V. Transport & communication	201.06	211.49	219.63	212.22	213.22	216.72	223.60	223.89	224.43
	5.10	5.19	3.85	0.10	0.47	1.64	0.49	0.13	0.24
VI. Recreation, entertainment, education & cultural services	174.74	178.03	184.66	179.33	181.25	182.28	189.17	190.31	189.30
	3.49	1.88	3.72	0.20	1.07	0.57	0.13	0.60	0.53
VII. Misc. goods & services	147.95	164.03	184.85	166.26	170.98	174.00	198.03	200.02	200.86
	6.13	10.87	12.69	0.36	2.84	1.77	1.80	1.00	0.42

Note : Figures in italics indicate inflation over previous year/month

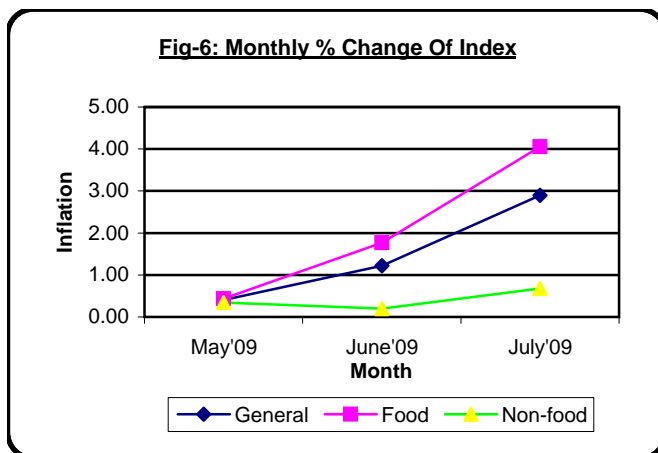
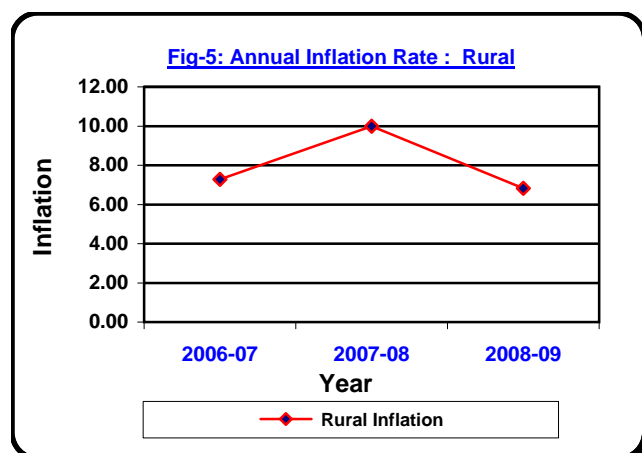


Table 4. Consumer Price Index (CPI) : Urban

(On Monthly Basis)

(1995-96=100)

CPI Classification	2006-07	2007-08	2008-09	2007-2008/2008-09			2008-2009/2009-10		
				May	June	July	May	June	July
General	172.73	189.65	201.49	191.78	199.02	201.62	202.52	204.09	209.87
	7.03	9.80	6.24	0.46	3.78	1.31	0.35	0.78	2.83
1. Food , beverage & tobacco	189.06	213.73	229.60	215.81	229.72	232.09	228.63	231.35	241.71
	8.54	13.05	7.43	0.45	6.45	1.03	0.47	1.19	4.48
2. Non-food	157.17	166.69	174.69	168.88	169.76	172.57	177.63	178.11	179.53
	5.34	6.06	4.80	0.49	0.52	1.66	0.19	0.27	0.80
I. Clothing & footwear	159.02	170.51	181.42	172.97	174.15	175.17	185.73	186.18	186.30
	6.93	7.23	6.40	1.18	0.68	0.59	0.02	0.24	0.06
II. Gross rent, fuel & lighting	138.41	147.54	148.24	148.05	148.09	149.09	148.50	148.61	149.91
	5.60	6.60	0.47	0.11	0.03	0.68	0.01	0.07	0.87
III. Furniture, furnishing, household equipments & operation	168.05	188.92	208.46	196.71	199.51	201.26	215.82	216.93	220.39
	8.08	12.42	10.34	0.49	1.42	0.88	0.36	0.51	1.59
IV. Medical care & health expenses	161.64	170.90	176.54	172.67	173.43	174.54	178.82	178.82	183.08
	3.30	5.73	3.30	0.16	0.44	0.64	0.02	0.00	2.38
V. Transport & communication	201.38	209.84	228.18	212.65	213.75	227.66	231.17	233.34	234.77
	4.60	4.20	8.74	0.50	0.52	6.51	0.51	0.94	0.61
VI. Recreation, entertainment, education & cultural services	163.51	167.16	173.59	170.12	170.35	170.74	178.53	178.53	179.22
	4.11	2.23	3.85	0.38	0.14	0.23	0.06	0.00	0.39
VII. Misc. goods & services	159.93	173.16	198.58	179.37	184.77	186.58	209.98	210.33	212.48
	4.79	8.27	14.68	1.75	3.01	0.98	0.73	0.17	1.02

Note : Figures in italics indicate inflation over previous year/month

