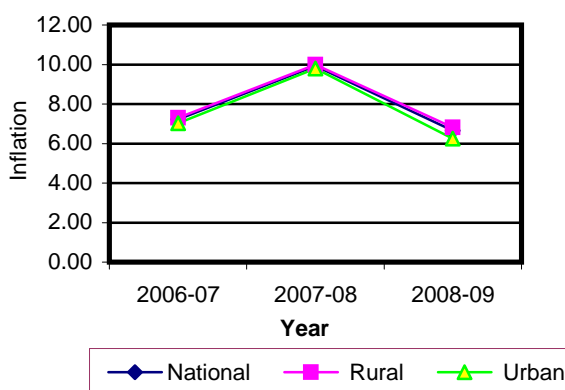


## Table 1. Consumer Price Index (CPI) And Inflation Rate (Point To Point)

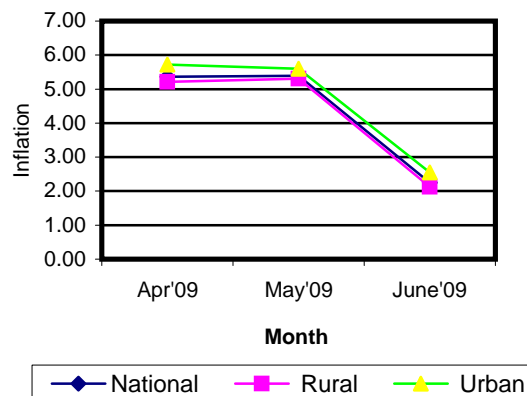
(1995-96=100)

CPI Classification	2006-07	2007-08	2008-09	2007-2008			2008-2009		
				April	May	June	April	May	June
<b>NATIONAL</b>									
General index	176.06	193.54	206.43	194.57	195.25	203.45	204.99	205.78	208.02
<i>Inflation</i>	7.22	9.93	6.66	7.66	7.44	10.04	5.36	5.39	2.25
Food index	184.18	206.79	221.64	207.71	208.45	221.57	217.68	218.65	222.13
<i>Inflation</i>	8.12	12.28	7.18	9.82	9.62	14.10	4.80	4.89	0.25
Non-food index	165.79	176.26	186.67	177.42	178.02	179.32	189.00	189.57	189.98
<i>Inflation</i>	5.90	6.32	5.91	4.16	3.89	3.54	6.53	6.49	5.94
<b>RURAL</b>									
General index	177.42	195.14	208.46	196.07	196.67	205.27	206.29	207.12	209.64
<i>Inflation</i>	7.30	9.99	6.83	7.68	7.54	10.29	5.21	5.31	2.13
Food index	182.18	203.93	218.38	204.78	205.43	218.23	213.63	214.55	218.34
<i>Inflation</i>	7.96	11.94	7.09	9.76	9.67	14.00	4.32	4.44	0.05
Non-food index	169.33	180.19	191.59	181.26	181.78	183.25	193.81	194.47	194.85
<i>Inflation</i>	6.10	6.41	6.33	3.91	3.67	3.50	6.92	6.98	6.33
<b>URBAN</b>									
General index	172.73	189.65	201.49	190.90	191.78	199.02	201.82	202.52	204.09
<i>Inflation</i>	7.03	9.80	6.24	7.59	7.18	9.40	5.72	5.60	2.55
Food index	189.06	213.73	229.60	214.85	215.81	229.72	227.55	228.63	231.35
<i>Inflation</i>	8.54	13.05	7.43	9.95	9.52	14.33	5.91	5.94	0.71
Non-food index	157.17	166.69	174.69	168.06	168.88	169.76	177.30	177.63	178.11
<i>Inflation</i>	5.34	6.06	4.80	4.83	4.47	3.64	5.50	5.18	4.92

**Fig-1: Annual Inflation Rate**



**Fig-2: Monthly Inflation Rate**

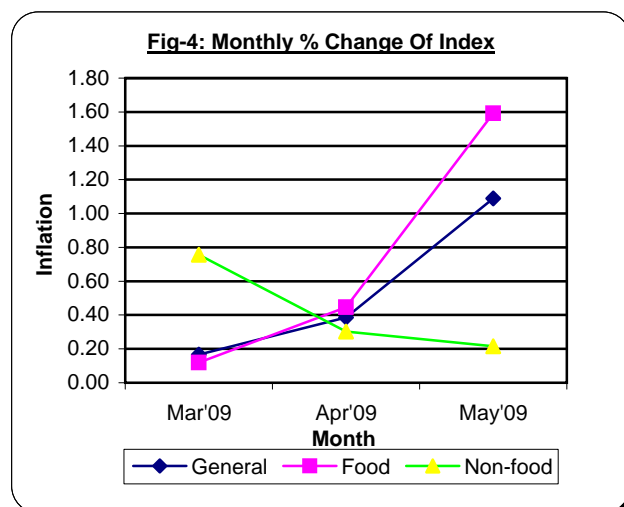
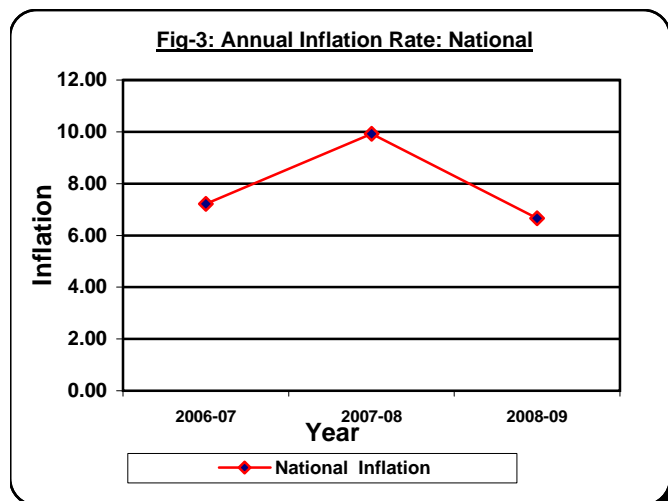


## Table 2. Consumer Price Index (CPI) : National

(1995-96=100)

CPI Classification	2006-07	2007-08	2008-09	2007-2008			2008-2009		
				April	May	June	April	May	June
<b>General</b>	176.06	193.54	206.43	194.57	195.25	203.45	204.99	205.78	208.02
	7.22	9.93	6.66	<i>0.13</i>	<i>0.35</i>	<i>4.20</i>	<i>0.17</i>	<i>0.39</i>	<i>1.09</i>
<b>1. Food, beverage &amp; tobacco</b>	184.18	206.79	221.64	207.71	208.45	221.57	217.68	218.65	222.13
	8.12	<i>12.28</i>	<i>7.18</i>	<i>0.42</i>	<i>0.36</i>	<i>6.29</i>	<i>0.12</i>	<i>0.45</i>	<i>1.59</i>
<b>2. Non-food of which</b>	165.79	176.26	186.67	177.42	178.02	179.32	189.00	189.57	189.98
	5.90	6.32	<i>5.91</i>	<i>0.36</i>	<i>0.34</i>	<i>0.73</i>	<i>0.76</i>	<i>0.30</i>	<i>0.22</i>
<b>I. Clothing &amp; footwear</b>	156.79	164.53	173.10	165.25	166.23	167.58	176.33	176.54	176.77
	5.69	<i>4.94</i>	<i>5.21</i>	<i>0.35</i>	<i>0.59</i>	<i>0.81</i>	<i>0.33</i>	<i>0.12</i>	<i>0.13</i>
<b>II. Gross rent, fuel &amp; lighting</b>	162.32	174.70	184.46	175.76	176.09	176.67	183.51	183.53	183.56
	6.78	7.63	<i>5.59</i>	<i>0.45</i>	<i>0.19</i>	<i>0.33</i>	<i>0.17</i>	<i>0.01</i>	<i>0.02</i>
<b>III. Furniture, furnishing, household equipments &amp; operation</b>	162.61	178.56	194.75	181.34	182.99	184.27	201.93	203.46	204.04
	7.54	<i>9.81</i>	<i>9.07</i>	<i>0.37</i>	<i>0.91</i>	<i>0.70</i>	<i>0.95</i>	<i>0.76</i>	<i>0.29</i>
<b>IV. Medical care &amp; health expenses</b>	178.49	185.66	189.25	186.25	186.34	187.25	191.15	191.16	191.16
	5.23	4.02	<i>1.93</i>	<i>0.08</i>	<i>0.05</i>	<i>0.49</i>	<i>0.20</i>	<i>0.01</i>	<i>0.00</i>
<b>V. Transport &amp; communication</b>	201.15	211.01	222.12	211.88	212.35	213.37	224.70	225.80	226.64
	4.95	4.90	<i>5.27</i>	<i>0.05</i>	<i>0.22</i>	<i>0.48</i>	<i>0.10</i>	<i>0.49</i>	<i>0.37</i>
<b>VI. Recreation, entertainment, education &amp; cultural services</b>	171.47	174.86	181.44	176.21	176.65	178.08	185.86	186.07	186.88
	3.66	1.98	<i>3.76</i>	<i>0.55</i>	<i>0.25</i>	<i>0.81</i>	<i>2.54</i>	<i>0.11</i>	<i>0.44</i>
<b>VII. Misc. goods &amp; services</b>	151.44	166.69	188.84	168.76	170.08	174.99	198.58	201.51	203.02
	5.72	<i>10.07</i>	<i>13.29</i>	<i>0.45</i>	<i>0.78</i>	<i>2.89</i>	<i>3.08</i>	<i>1.48</i>	<i>0.75</i>

**Note :** Figures in italics indicate percentage change over previous year/month

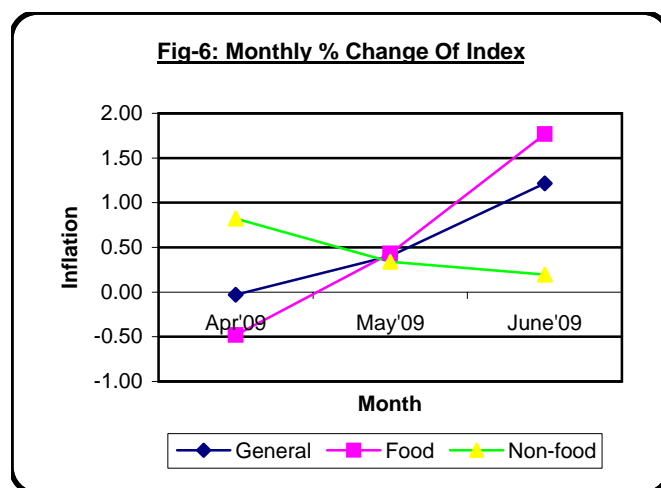
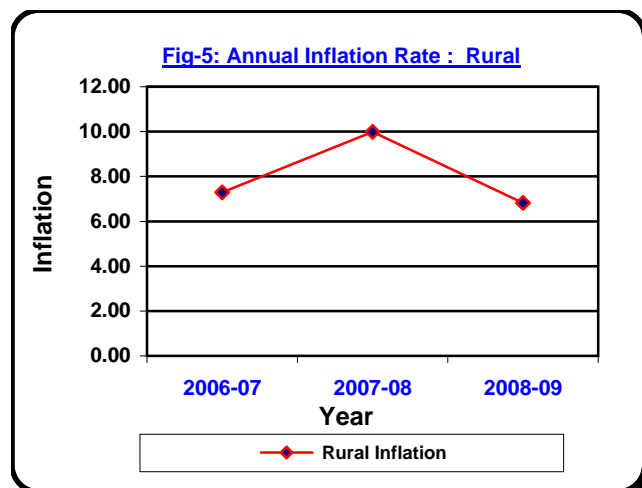


### Table 3. Consumer Price Index (CPI) : Rural

(1995-96=100)

CPI Classification	2006-07	2007-08	2008-09	2007-2008			2008-2009		
				April	May	June	April	May	June
<b>General</b>	177.42	195.14	208.46	196.07	196.67	205.27	206.29	207.12	209.64
	7.29	9.99	6.83	-0.18	0.31	4.37	-0.03	0.40	1.22
1. <b>Food</b> , beverage & tobacco	182.18	203.93	218.38	204.78	205.43	218.23	213.63	214.55	218.34
	7.95	11.94	7.09	-0.47	0.32	6.23	-0.48	0.43	1.77
2. <b>Non-food</b> of which	169.33	180.19	191.59	181.26	181.78	183.25	193.81	194.47	194.85
	6.10	6.41	6.33	0.39	0.29	0.81	0.82	0.34	0.20
I. Clothing & footwear	155.88	162.08	169.68	162.91	163.46	164.88	172.48	172.77	172.90
	5.19	3.98	4.69	0.46	0.34	0.87	0.44	0.17	0.08
II. Gross rent, fuel & lighting	172.14	185.85	199.33	187.20	187.61	188.40	197.90	197.91	197.91
	7.17	7.96	7.25	0.56	0.22	0.42	0.15	0.01	0.00
III. Furniture, furnishing, household equipments & operation	160.38	174.31	189.12	175.42	177.36	178.01	196.54	198.39	198.74
	7.31	8.69	8.50	0.41	1.11	0.37	0.87	0.94	0.18
IV. Medical care & health expenses	185.41	191.72	194.47	191.94	191.96	192.92	196.22	196.23	196.23
	5.93	3.40	1.43	0.10	0.01	0.50	0.25	0.01	0.00
V. Transport & communication	201.06	211.49	219.63	212.00	212.22	213.22	222.52	223.60	223.89
	5.10	5.19	3.85	0.03	0.10	0.47	0.06	0.49	0.13
VI. Recreation, entertainment, education & cultural services	174.74	178.03	184.66	178.98	179.33	181.25	188.92	189.17	190.31
	3.49	1.88	3.72	0.31	0.20	1.07	2.71	0.13	0.60
VII. Misc. goods & services	147.95	164.03	184.85	165.67	166.26	170.98	194.53	198.03	200.02
	6.13	10.87	12.69	0.23	0.36	2.84	3.76	1.80	1.00

**Note :** Figures in italics indicate percentage change over previous year/month



### Table 4. Consumer Price Index (CPI) : Urban

(1995-96=100)

CPI Classification	2006-07	2007-08	2008-09	2007-2008			2008-2009		
				April	May	June	April	May	June
<b>General</b>	172.73	189.65	201.49	190.90	191.78	199.02	201.82	202.52	204.09
	7.03	9.80	6.24	-0.03	0.46	3.78	0.65	0.35	0.78
1. <b>Food</b> , beverage & tobacco	189.06	213.73	229.60	214.85	215.81	229.72	227.55	228.63	231.35
	8.54	13.05	7.43	-0.29	0.45	6.45	0.71	0.47	1.19
2. <b>Non-food</b> of which	157.17	166.69	174.69	168.06	168.88	169.76	177.30	177.63	178.11
	5.34	6.06	4.80	0.29	0.49	0.52	0.58	0.19	0.27
I. Clothing & footwear	159.02	170.51	181.42	170.96	172.97	174.15	185.70	185.73	186.18
	6.93	7.23	6.40	0.09	1.18	0.68	0.06	0.02	0.24
II. Gross rent, fuel & lighting	138.41	147.54	148.24	147.89	148.05	148.09	148.48	148.50	148.61
	5.60	6.60	0.47	0.09	0.11	0.03	0.26	0.01	0.07
III. Furniture, furnishing, household equipments & operation	168.05	188.92	208.46	195.75	196.71	199.51	215.04	215.82	216.93
	8.08	12.42	10.34	0.28	0.49	1.42	1.12	0.36	0.51
IV. Medical care & health expenses	161.64	170.90	176.54	172.40	172.67	173.43	178.79	178.82	178.82
	3.30	5.73	3.30	0.02	0.16	0.44	0.08	0.02	0.00
V. Transport & communication	201.38	209.84	228.18	211.60	212.65	213.75	230.00	231.17	233.34
	4.60	4.20	8.74	0.10	0.50	0.52	0.18	0.51	0.94
VI. Recreation, entertainment, education & cultural services	163.51	167.16	173.59	169.48	170.12	170.35	178.42	178.53	178.53
	4.11	2.23	3.85	1.17	0.38	0.14	2.12	0.06	0.00
VII. Misc. goods & services	159.93	173.16	198.58	176.29	179.37	184.77	208.45	209.98	210.33
	4.79	8.27	14.68	0.96	1.75	3.01	1.57	0.73	0.17

**Note :** Figures in italics indicate percentage change over previous year/month

