

**Table 1. Consumer Price Index (CPI) And Inflation Rate
(Point To Point)**

(1995-96 = 100)

CPI Classification	2004-05	2005-06	2006-07	2007-08	2009		
					Jan	Feb	Mar
NATIONAL							
General index	153.23	164.21	176.06	193.54	204.04	204.02	204.65
<i>Inflation</i>	6.48	7.17	7.22	9.93	6.06	5.81	5.04
Food index	158.08	170.34	184.18	206.79	218.56	217.88	217.95
<i>Inflation</i>	7.91	7.76	8.12	12.28	6.83	6.15	4.49
Nonfood	147.14	156.56	165.79	176.26	185.20	186.11	187.58
<i>Inflation</i>	4.33	6.40	5.90	6.32	4.88	5.33	6.11
ALL RURAL							
General index	154.03	165.37	177.42	195.14	206.21	206.03	206.35
<i>Inflation</i>	6.62	7.36	7.30	9.99	6.39	6.11	5.06
Food index	156.82	168.77	182.18	203.93	215.67	214.90	214.66
<i>Inflation</i>	7.99	7.62	7.96	11.94	6.92	6.28	4.33
Nonfood	149.29	159.59	169.33	180.19	190.13	190.94	192.23
<i>Inflation</i>	4.27	6.90	6.10	6.41	5.37	5.79	6.46
ALL URBAN							
General index	151.29	161.39	172.73	189.65	198.77	199.14	200.51
<i>Inflation</i>	6.14	6.68	7.03	9.80	5.24	5.08	5.00
Food index	161.14	174.18	189.06	213.73	225.59	225.15	225.95
<i>Inflation</i>	7.71	8.09	8.54	13.05	6.60	5.87	4.86
Nonfood	141.90	149.20	157.17	166.69	173.21	174.34	176.27
<i>Inflation</i>	4.49	5.14	5.34	6.06	3.58	4.12	5.19

Fig-1: Annual Inflation Rate

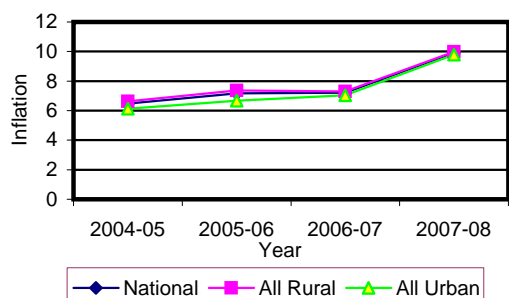


Fig-2: Monthly Inflation Rate
(Point to Point)

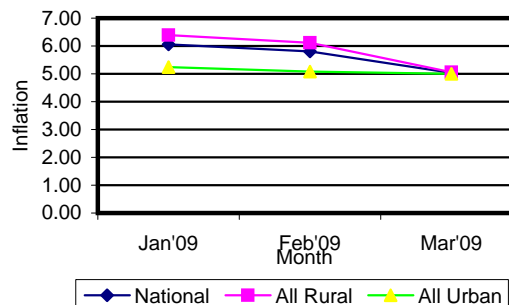


Table 2. Consumer Price Index (CPI) : National

(1995-96 = 100)

CPI Classification	2004-05	2005-06	2006-07	2007-08	2009		
					Jan	Feb	Mar
General	153.23 <i>6.48</i>	164.21 <i>7.17</i>	176.06 <i>7.22</i>	193.54 <i>9.93</i>	204.04 <i>-0.42</i>	204.02 <i>-0.01</i>	204.65 <i>0.31</i>
1. Food , beverage & tobacco	158.08 <i>7.90</i>	170.34 <i>7.76</i>	184.18 <i>8.12</i>	206.79 <i>12.28</i>	218.56 <i>-0.94</i>	217.88 <i>-0.31</i>	217.95 <i>0.03</i>
2. Non-food of which	147.14 <i>4.33</i>	156.56 <i>6.40</i>	165.79 <i>5.90</i>	176.26 <i>6.32</i>	185.20 <i>0.49</i>	186.11 <i>0.49</i>	187.58 <i>0.79</i>
I. Clothing & footwear	142.15 <i>4.38</i>	148.35 <i>4.36</i>	156.79 <i>5.69</i>	164.53 <i>4.94</i>	173.82 <i>1.07</i>	173.89 <i>0.04</i>	175.75 <i>1.07</i>
II. Gross rent, fuel & lighting	141.43 <i>2.52</i>	152.02 <i>7.49</i>	162.32 <i>6.78</i>	174.7 <i>7.63</i>	182.11 <i>0.17</i>	182.78 <i>0.37</i>	183.19 <i>0.22</i>
III. Furniture, furnishing, household equipments & operation	143.18 <i>3.79</i>	151.21 <i>5.61</i>	162.61 <i>7.54</i>	178.56 <i>9.81</i>	193.08 <i>0.91</i>	195.53 <i>1.27</i>	200.03 <i>2.30</i>
IV. Medical care & health expenses	162.47 <i>5.25</i>	169.62 <i>4.40</i>	178.49 <i>5.23</i>	185.66 <i>4.02</i>	189.25 <i>0.65</i>	189.94 <i>0.36</i>	190.76 <i>0.43</i>
V. Transport & communication	179.94 <i>5.36</i>	191.66 <i>6.51</i>	201.15 <i>4.95</i>	211.01 <i>4.90</i>	220.12 <i>0.12</i>	221.32 <i>0.55</i>	224.48 <i>1.43</i>
VI. Recreation, entertainment, education & cultural services	150.24 <i>6.32</i>	165.42 <i>10.10</i>	171.47 <i>3.66</i>	174.86 <i>1.98</i>	179.90 <i>0.03</i>	180.38 <i>0.27</i>	181.25 <i>0.48</i>
VII. Misc. goods & services	137.78 <i>2.96</i>	143.25 <i>3.97</i>	151.44 <i>5.72</i>	166.69 <i>10.07</i>	186.85 <i>1.26</i>	189.99 <i>1.68</i>	192.65 <i>1.40</i>

Note : Figures in italics indicate percentage change over previous year/month

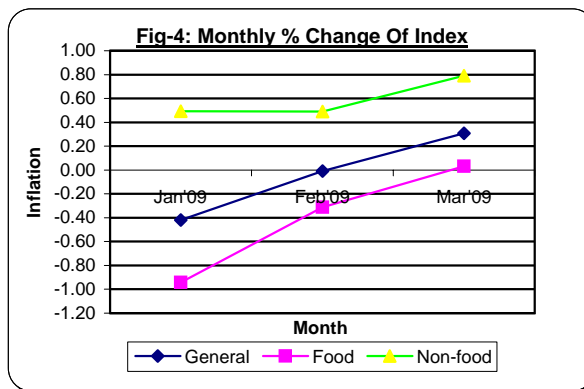
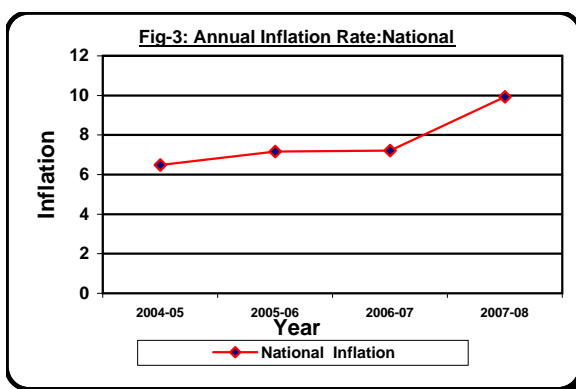


Table 3. Consumer Price Index (CPI) : All Rural

(1995-96 = 100)

CPI Classification	Weight	2005-06	2006-07	2007-08	2009		
					Jan	Feb	Mar
General	100.00	165.37	177.42	195.14	206.21	206.03	206.35
		7.36	7.29	9.99	-0.47	-0.09	0.16
1. Food , beverage & tobacco	62.96	168.77	182.18	203.93	215.67	214.90	214.66
		7.62	7.95	11.94	-0.97	-0.36	-0.11
2. Non-food of which	37.04	159.59	169.33	180.19	190.13	190.94	192.23
		6.90	6.10	6.41	0.52	0.43	0.68
I. Clothing & footwear	6.88	148.19	155.88	162.08	170.68	170.71	171.72
		4.56	5.19	3.98	1.29	0.02	0.59
II. Gross rent, fuel & lighting	14.69	160.63	172.14	185.85	196.59	197.13	197.61
		8.80	7.17	7.96	0.07	0.27	0.24
III. Furniture, furnishing, household equipments & operation	2.70	149.45	160.38	174.31	187.34	189.66	194.85
		5.32	7.31	8.69	1.05	1.24	2.74
IV. Medical care & health expenses	2.79	175.03	185.41	191.72	194.66	194.80	195.73
		5.09	5.93	3.40	0.66	0.07	0.48
V. Transport & communication	2.98	191.31	201.06	211.49	218.13	219.65	222.38
		6.92	5.10	5.19	0.10	0.70	1.24
VI. Recreation, entertainment, education & cultural services	3.20	168.85	174.74	178.03	183.12	183.62	183.93
		9.80	3.49	1.88	0.04	0.27	0.17
VII. Misc. goods & services	3.80	139.40	147.95	164.03	183.01	185.41	187.48
		3.34	6.13	10.87	1.47	1.31	1.12

Note : Figures in italics indicate percentage change over previous year/month

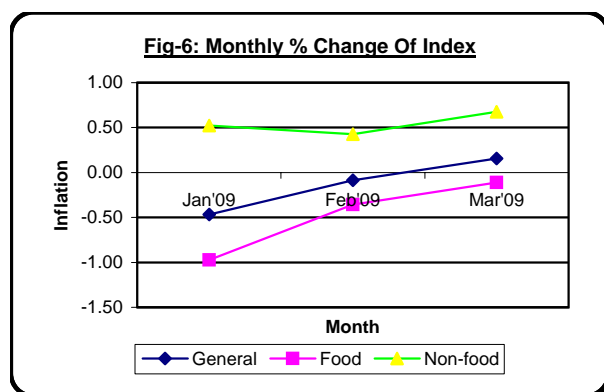
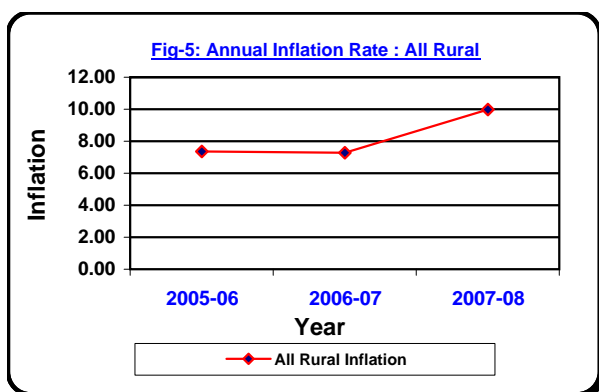


Table 4. Consumer Price Index (CPI) : All Urban

(1995-96 = 100)

CPI Classification	Weight	2005-06	2006-07	2007-08	2009		
					Jan	Feb	Mar
General	100.00	161.39	172.73	189.65	198.77	199.14	200.51
		6.68	7.03	9.80	-0.30	0.19	0.69
1. Food , beverage & tobacco	48.80	174.18	189.06	213.73	225.59	225.15	225.95
		8.09	8.54	13.05	-0.87	-0.20	0.36
2. Non-food of which	51.20	149.20	157.17	166.69	173.21	174.34	176.27
		5.14	5.34	6.06	0.42	0.65	1.11
I. Clothing & footwear	6.79	148.72	159.02	170.51	181.45	181.63	185.58
		3.87	6.93	7.23	0.56	0.10	2.17
II. Gross rent, fuel & lighting	22.17	131.07	138.41	147.54	146.86	147.85	148.09
		3.77	5.60	6.60	0.51	0.67	0.16
III. Furniture, furnishing, household equipments & operation	2.58	155.49	168.05	188.92	207.05	209.81	212.66
		6.28	8.08	12.42	0.60	1.33	1.36
IV. Medical care & health expenses	2.97	156.47	161.64	170.90	176.06	178.09	178.65
		2.61	3.30	5.73	0.60	1.15	0.31
V. Transport & communication	7.07	192.53	201.38	209.84	224.96	225.37	229.59
		5.55	4.60	4.20	0.16	0.18	1.87
VI. Recreation, entertainment, education & cultural services	6.40	157.05	163.51	167.16	172.05	172.50	174.71
		10.91	4.11	2.23	0.02	0.26	1.28
VII. Misc. goods & services	3.22	152.62	159.93	173.16	196.20	201.15	205.23
		5.40	4.79	8.27	0.77	2.52	2.03

Note : Figures in italics indicate percentage change over previous year/month

