

**Table 1 Consumer Price Index (CPI) And Inflation Rate
(Point To Point)**

(1995-96 = 100)

CPI Classification	2003-04	2004-05	2005-06	2006-07	2007		
					Sep	Oct	Nov
NATIONAL							
General index	143.90	153.23	164.21	176.06	190.70	195.15	195.19
<i>Inflation</i>	5.83	6.48	7.17	7.22	9.60	10.06	11.21
Food index	146.50	158.08	170.34	184.18	203.14	209.91	209.95
<i>Inflation</i>	6.93	7.91	7.76	8.12	11.10	11.73	13.83
Nonfood	141.03	147.14	156.56	165.79	174.55	175.67	175.72
<i>Inflation</i>	4.37	4.33	6.40	5.90	7.35	7.42	7.26
ALL RURAL							
General index	144.46	154.03	165.37	177.42	192.29	197.17	197.20
<i>Inflation</i>	5.77	6.62	7.36	7.30	9.60	10.22	11.19
Food index	145.22	156.82	168.77	182.18	200.38	207.39	207.41
<i>Inflation</i>	6.55	7.99	7.62	7.96	10.68	11.54	13.13
Nonfood	143.18	149.29	159.59	169.33	178.53	179.79	179.84
<i>Inflation</i>	4.47	4.27	6.90	6.10	7.61	7.71	7.55
ALL URBAN							
General index	142.54	151.29	161.39	172.73	186.82	190.23	190.29
<i>Inflation</i>	5.99	6.14	6.68	7.03	9.57	9.64	11.29
Food index	149.60	161.14	174.18	189.06	209.87	216.05	216.13
<i>Inflation</i>	7.80	7.71	8.09	8.54	12.09	12.15	15.50
Nonfood	135.80	141.90	149.20	157.17	164.85	165.63	165.67
<i>Inflation</i>	4.14	4.49	5.14	5.34	6.65	6.67	6.46

Fig-1: Annual Inflation Rate

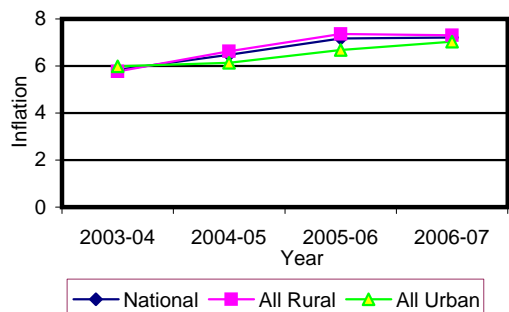


Fig-2: Monthly inflation Rate (Point to Point)

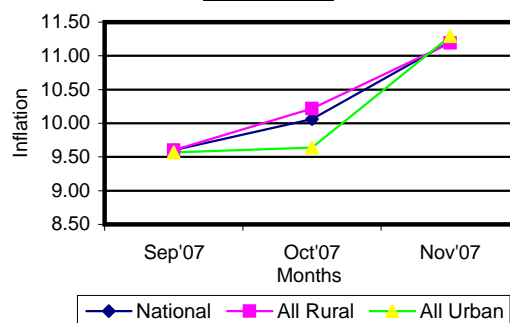


Table 2 Consumer Price Index (CPI) : National

(1995-96 = 100)

CPI Classification	2003-04	2004-05	2005-06	2006-07	2007		
					Sep	Oct	Nov
General	143.90 <i>5.83</i>	153.23 <i>6.48</i>	164.21 <i>7.17</i>	176.06 <i>7.22</i>	190.70 <i>1.31</i>	195.15 <i>2.33</i>	195.19 <i>0.02</i>
1. Food , beverage & tobacco	146.50 <i>6.93</i>	158.08 <i>7.90</i>	170.34 <i>7.76</i>	184.18 <i>8.12</i>	203.14 <i>2.00</i>	209.91 <i>3.33</i>	209.95 <i>0.02</i>
2. Non-food of which	141.03 <i>4.37</i>	147.14 <i>4.33</i>	156.56 <i>6.40</i>	165.79 <i>5.90</i>	174.55 <i>0.14</i>	175.67 <i>0.64</i>	175.72 <i>0.03</i>
I. Clothing & footwear	136.25 <i>4.37</i>	142.15 <i>4.38</i>	148.35 <i>4.36</i>	156.79 <i>5.69</i>	163.27 <i>0.44</i>	164.30 <i>0.63</i>	164.39 <i>0.05</i>
II. Gross rent, fuel & lighting	136.19 <i>3.80</i>	141.43 <i>2.52</i>	152.02 <i>7.49</i>	162.32 <i>6.78</i>	173.32 <i>0.05</i>	174.36 <i>0.60</i>	174.42 <i>0.03</i>
III. Furniture, furnishing, household equipments & operation	137.95 <i>4.25</i>	143.18 <i>3.79</i>	151.21 <i>5.61</i>	162.61 <i>7.54</i>	174.40 <i>0.10</i>	176.42 <i>1.16</i>	176.46 <i>0.02</i>
IV. Medical care & health expenses	154.36 <i>6.27</i>	162.47 <i>5.25</i>	169.62 <i>4.40</i>	178.49 <i>5.23</i>	184.57 <i>0.00</i>	185.06 <i>0.27</i>	185.08 <i>0.01</i>
V. Transport & communication	170.79 <i>7.06</i>	179.94 <i>5.36</i>	191.66 <i>6.51</i>	201.15 <i>4.95</i>	209.82 <i>0.04</i>	210.13 <i>0.15</i>	210.15 <i>0.01</i>
VI. Recreation, entertainment, education & cultural services	141.31 <i>3.19</i>	150.24 <i>6.32</i>	165.42 <i>10.10</i>	171.47 <i>3.66</i>	173.46 <i>0.19</i>	174.06 <i>0.35</i>	174.10 <i>0.02</i>
VII. Misc. goods & services	133.82 <i>3.42</i>	137.78 <i>2.96</i>	143.25 <i>3.97</i>	151.44 <i>5.72</i>	162.55 <i>0.13</i>	165.71 <i>1.94</i>	165.76 <i>0.03</i>

Note : Figures in italics indicate percentage change over previous year/month

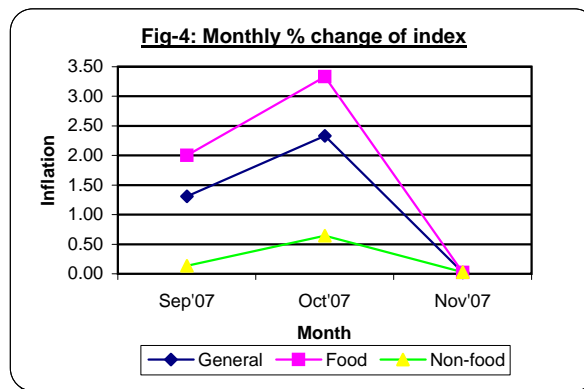
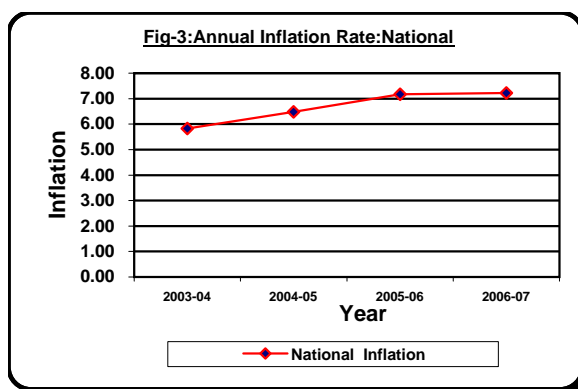


Table 3 Consumer Price Index (CPI) : All Rural

(1995-96 = 100)

CPI Classification	Weight	2004-05	2005-06	2006-07	2007		
					Sep	Oct	Nov
General	100.00	154.03	165.37	177.42	192.29	197.17	197.20
		6.62	7.36	7.29	1.41	2.54	0.02
1. Food , beverage & tobacco	62.96	156.82	168.77	182.18	200.38	207.39	207.41
		7.99	7.62	7.95	2.08	3.50	0.01
2. Non-food of which	37.04	149.29	159.59	169.33	178.53	179.79	179.84
		4.27	6.90	6.10	0.15	0.71	0.03
I. Clothing & footwear	6.88	141.73	148.19	155.88	161.08	161.76	161.87
		4.05	4.56	5.19	0.44	0.42	0.07
II. Gross rent, fuel & lighting	14.69	147.64	160.63	172.14	184.13	185.44	185.50
		4.13	8.80	7.17	0.07	0.71	0.03
III. Furniture, furnishing, household equipments & operation	2.70	141.90	149.45	160.38	171.74	173.97	174.00
		3.07	5.32	7.31	0.13	1.30	0.02
IV. Medical care & health expenses	2.79	166.56	175.03	185.41	191.21	191.66	191.67
		5.85	5.09	5.93	0.00	0.24	0.01
V. Transport & communication	2.98	178.92	191.31	201.06	210.70	211.02	211.04
		5.07	6.92	5.10	0.03	0.15	0.01
VI. Recreation, entertainment, education & cultural services	3.20	153.78	168.85	174.74	176.72	177.48	177.50
		6.58	9.80	3.49	0.20	0.43	0.01
VII. Misc. goods & services	3.80	134.90	139.40	147.95	160.23	163.45	163.49
		1.80	3.34	6.13	0.14	2.01	0.02

Note : Figures in italics indicate percentage change over previous year/month

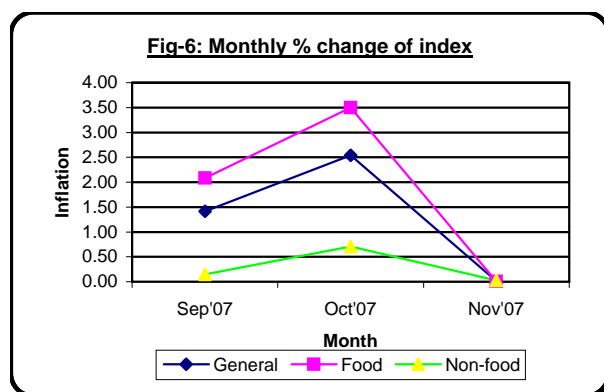
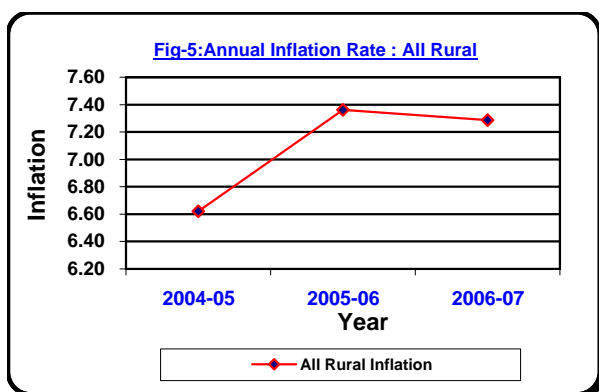


Table 4 Consumer Price Index (CPI) : All Urban

(1995-96 = 100)

CPI Classification	Weight	2004-05	2005-06	2006-07	2007		
					Sep	Oct	Nov
General	100.00	151.29	161.39	172.73	186.82	190.23	190.29
		<i>6.14</i>	<i>6.68</i>	<i>7.03</i>	<i>1.04</i>	<i>1.83</i>	<i>0.03</i>
1. Food , beverage & tobacco	48.80	161.14	174.18	189.06	209.87	216.05	216.13
		<i>7.71</i>	<i>8.09</i>	<i>8.54</i>	<i>1.82</i>	<i>2.94</i>	<i>0.04</i>
2. Non-food of which	51.20	141.90	149.20	157.17	164.85	165.63	165.67
		<i>4.49</i>	<i>5.14</i>	<i>5.34</i>	<i>0.10</i>	<i>0.47</i>	<i>0.02</i>
I. Clothing & footwear	6.79	143.18	148.72	159.02	168.62	170.50	170.54
		<i>4.99</i>	<i>3.87</i>	<i>6.93</i>	<i>0.45</i>	<i>1.11</i>	<i>0.02</i>
II. Gross rent, fuel & lighting	22.17	126.31	131.07	138.41	147.01	147.39	147.43
		<i>3.06</i>	<i>3.77</i>	<i>5.60</i>	<i>0.01</i>	<i>0.26</i>	<i>0.03</i>
III. Furniture, furnishing, household equipments & operation	2.58	146.30	155.49	168.05	180.89	182.38	182.44
		<i>5.55</i>	<i>6.28</i>	<i>8.08</i>	<i>0.04</i>	<i>0.82</i>	<i>0.03</i>
IV. Medical care & health expenses	2.97	152.49	156.47	161.64	168.41	168.99	169.03
		<i>3.68</i>	<i>2.61</i>	<i>3.30</i>	<i>0.01</i>	<i>0.34</i>	<i>0.02</i>
V. Transport & communication	7.07	182.41	192.53	201.38	207.66	207.96	207.98
		<i>6.04</i>	<i>5.55</i>	<i>4.60</i>	<i>0.05</i>	<i>0.14</i>	<i>0.01</i>
VI. Recreation, entertainment, education & cultural services	6.40	141.60	157.05	163.51	165.52	165.73	165.82
		<i>5.59</i>	<i>10.91</i>	<i>4.11</i>	<i>0.15</i>	<i>0.13</i>	<i>0.05</i>
VII. Misc. goods & services	3.22	144.80	152.62	159.93	168.21	171.23	171.28
		<i>5.69</i>	<i>5.40</i>	<i>4.79</i>	<i>0.11</i>	<i>1.80</i>	<i>0.03</i>

Note : Figures in italics indicate percentage change over previous year/month

