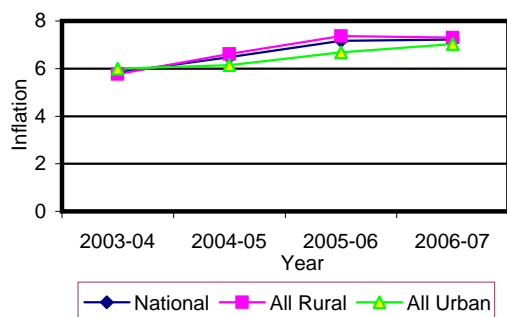


**Table 1 Consumer Price Index (CPI) And Inflation Rate
(Point To Point)**

(1995-96 = 100)

CPI Classification	2003-04	2004-05	2005-06	2006-07	2007		
					Aug	Sep	Oct
NATIONAL							
General index	143.90	153.23	164.21	176.06	188.24	190.70	195.15
<i>Inflation</i>	5.83	6.48	7.17	7.22	10.12	9.60	10.06
Food index	146.50	158.08	170.34	184.18	199.15	203.14	209.91
<i>Inflation</i>	6.93	7.91	7.76	8.12	11.62	11.10	11.73
Nonfood	141.03	147.14	156.56	165.79	174.31	174.55	175.67
<i>Inflation</i>	4.37	4.33	6.40	5.90	7.99	7.35	7.42
ALL RURAL							
General index	144.46	154.03	165.37	177.42	189.61	192.29	197.17
<i>Inflation</i>	5.77	6.62	7.36	7.30	10.07	9.60	10.22
Food index	145.22	156.82	168.77	182.18	196.29	200.38	207.39
<i>Inflation</i>	6.55	7.99	7.62	7.96	11.06	10.68	11.54
Nonfood	143.18	149.29	159.59	169.33	178.27	178.53	179.79
<i>Inflation</i>	4.47	4.27	6.90	6.10	8.29	7.61	7.71
ALL URBAN							
General index	142.54	151.29	161.39	172.73	184.90	186.82	190.23
<i>Inflation</i>	5.99	6.14	6.68	7.03	10.24	9.57	9.64
Food index	149.60	161.14	174.18	189.06	206.12	209.87	216.05
<i>Inflation</i>	7.80	7.71	8.09	8.54	12.94	12.09	12.15
Nonfood	135.80	141.90	149.20	157.17	164.68	164.85	165.63
<i>Inflation</i>	4.14	4.49	5.14	5.34	7.20	6.65	6.67

Fig-1: Annual Inflation Rate



**Fig-2: Monthly inflation Rate
(Point to Point)**

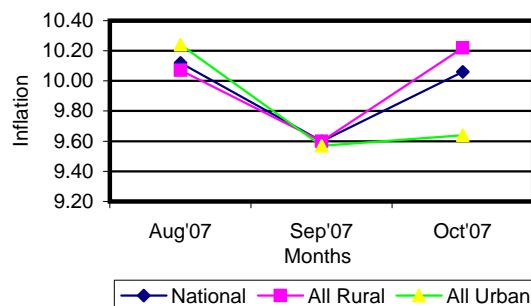


Table 2 Consumer Price Index (CPI) : National

(1995-96 = 100)

CPI Classification	2003-04	2004-05	2005-06	2006-07	2007		
					Aug	Sep	Oct
General	143.90 <i>5.83</i>	153.23 <i>6.48</i>	164.21 <i>7.17</i>	176.06 <i>7.22</i>	188.24 <i>0.85</i>	190.70 <i>1.31</i>	195.15 <i>2.33</i>
1. Food , beverage & tobacco	146.50 <i>6.93</i>	158.08 <i>7.90</i>	170.34 <i>7.76</i>	184.18 <i>8.12</i>	199.15 <i>1.31</i>	203.14 <i>2.00</i>	209.91 <i>3.33</i>
2. Non-food of which	141.03 <i>4.37</i>	147.14 <i>4.33</i>	156.56 <i>6.40</i>	165.79 <i>5.90</i>	174.31 <i>0.11</i>	174.55 <i>0.14</i>	175.67 <i>0.64</i>
I. Clothing & footwear	136.25 <i>4.37</i>	142.15 <i>4.38</i>	148.35 <i>4.36</i>	156.79 <i>5.69</i>	162.56 <i>0.07</i>	163.27 <i>0.44</i>	164.30 <i>0.63</i>
II. Gross rent, fuel & lighting	136.19 <i>3.80</i>	141.43 <i>2.52</i>	152.02 <i>7.49</i>	162.32 <i>6.78</i>	173.23 <i>0.05</i>	173.32 <i>0.05</i>	174.36 <i>0.60</i>
III. Furniture, furnishing, household equipments & operation	137.95 <i>4.25</i>	143.18 <i>3.79</i>	151.21 <i>5.61</i>	162.61 <i>7.54</i>	174.22 <i>0.04</i>	174.40 <i>0.10</i>	176.42 <i>1.16</i>
IV. Medical care & health expenses	154.36 <i>6.27</i>	162.47 <i>5.25</i>	169.62 <i>4.40</i>	178.49 <i>5.23</i>	184.57 <i>0.06</i>	184.57 <i>0.00</i>	185.06 <i>0.27</i>
V. Transport & communication	170.79 <i>7.06</i>	179.94 <i>5.36</i>	191.66 <i>6.51</i>	201.15 <i>4.95</i>	209.74 <i>0.12</i>	209.82 <i>0.04</i>	210.13 <i>0.15</i>
VI. Recreation, entertainment, education & cultural services	141.31 <i>3.19</i>	150.24 <i>6.32</i>	165.42 <i>10.10</i>	171.47 <i>3.66</i>	173.13 <i>0.13</i>	173.46 <i>0.19</i>	174.06 <i>0.35</i>
VII. Misc. goods & services	133.82 <i>3.42</i>	137.78 <i>2.96</i>	143.25 <i>3.97</i>	151.44 <i>5.72</i>	162.34 <i>0.50</i>	162.55 <i>0.13</i>	165.71 <i>1.94</i>

Note : Figures in italics indicate percentage change over previous year/month

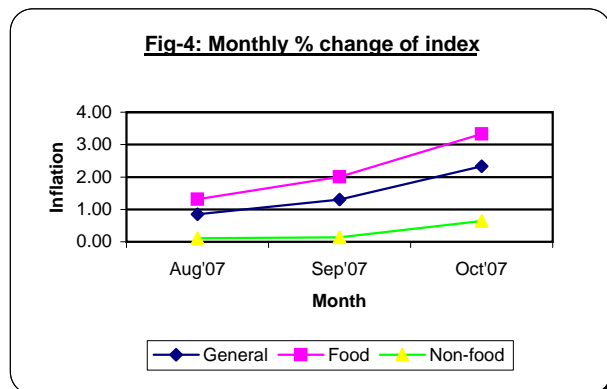
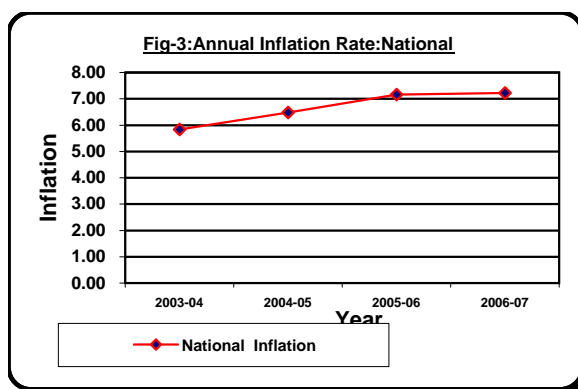


Table 3 Consumer Price Index (CPI) : All Rural

(1995-96 = 100)

CPI Classification	Weight	2004-05	2005-06	2006-07	2007		
					Aug	Sep	Oct
General	100.00	154.03	165.37	177.42	189.61	192.29	197.17
		<i>6.62</i>	<i>7.36</i>	<i>7.29</i>	<i>0.87</i>	<i>1.41</i>	<i>2.54</i>
1. Food , beverage & tobacco	62.96	156.82	168.77	182.18	196.29	200.38	207.39
		<i>7.99</i>	<i>7.62</i>	<i>7.95</i>	<i>1.28</i>	<i>2.08</i>	<i>3.50</i>
2. Non-food of which	37.04	149.29	159.59	169.33	178.27	178.53	179.79
		<i>4.27</i>	<i>6.90</i>	<i>6.10</i>	<i>0.12</i>	<i>0.15</i>	<i>0.71</i>
I. Clothing & footwear	6.88	141.73	148.19	155.88	160.38	161.08	161.76
		<i>4.05</i>	<i>4.56</i>	<i>5.19</i>	<i>0.00</i>	<i>0.44</i>	<i>0.42</i>
II. Gross rent, fuel & lighting	14.69	147.64	160.63	172.14	184.01	184.13	185.44
		<i>4.13</i>	<i>8.80</i>	<i>7.17</i>	<i>0.07</i>	<i>0.07</i>	<i>0.71</i>
III. Furniture, furnishing, household equipments & operation	2.70	141.90	149.45	160.38	171.51	171.74	173.97
		<i>3.07</i>	<i>5.32</i>	<i>7.31</i>	<i>0.05</i>	<i>0.13</i>	<i>1.30</i>
IV. Medical care & health expenses	2.79	166.56	175.03	185.41	191.21	191.21	191.66
		<i>5.85</i>	<i>5.09</i>	<i>5.93</i>	<i>0.05</i>	<i>0.00</i>	<i>0.24</i>
V. Transport & communication	2.98	178.92	191.31	201.06	210.64	210.70	211.02
		<i>5.07</i>	<i>6.92</i>	<i>5.10</i>	<i>0.11</i>	<i>0.03</i>	<i>0.15</i>
VI. Recreation, entertainment, education & cultural services	3.20	153.78	168.85	174.74	176.36	176.72	177.48
		<i>6.58</i>	<i>9.80</i>	<i>3.49</i>	<i>0.18</i>	<i>0.20</i>	<i>0.43</i>
VII. Misc. goods & services	3.80	134.90	139.40	147.95	160.01	160.23	163.45
		<i>1.80</i>	<i>3.34</i>	<i>6.13</i>	<i>0.60</i>	<i>0.14</i>	<i>2.01</i>

Note : Figures in italics indicate percentage change over previous year/month

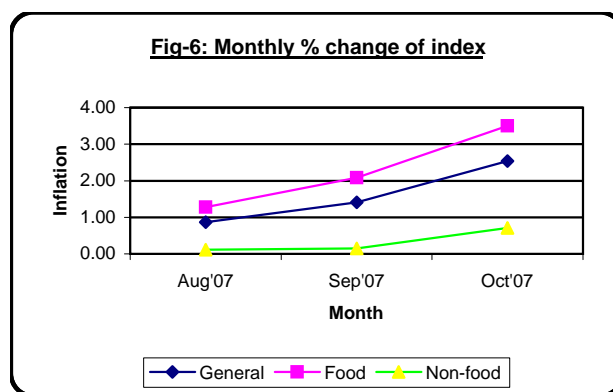
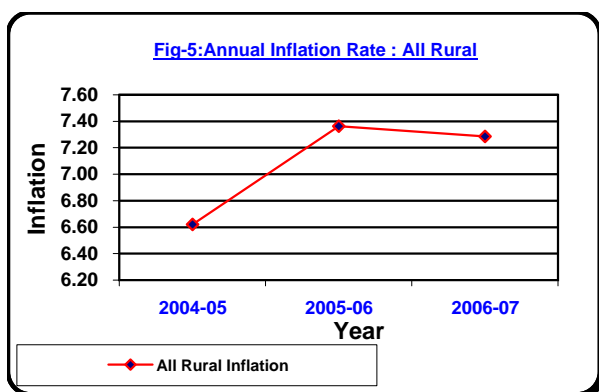


Table 4 Consumer Price Index (CPI) : All Urban

(1995-96 = 100)

CPI Classification	Weight	2004-05	2005-06	2006-07	2007		
					Aug	Sep	Oct
General	100.00	151.29 <i>6.14</i>	161.39 <i>6.68</i>	172.73 <i>7.03</i>	184.90 <i>0.80</i>	186.82 <i>1.04</i>	190.23 <i>1.83</i>
1. Food , beverage & tobacco	48.80	161.14 <i>7.71</i>	174.18 <i>8.09</i>	189.06 <i>8.54</i>	206.12 <i>1.40</i>	209.87 <i>1.82</i>	216.05 <i>2.94</i>
2. Non-food of which	51.20	141.90 <i>4.49</i>	149.20 <i>5.14</i>	157.17 <i>5.34</i>	164.68 <i>0.09</i>	164.85 <i>0.10</i>	165.63 <i>0.47</i>
I. Clothing & footwear	6.79	143.18 <i>4.99</i>	148.72 <i>3.87</i>	159.02 <i>6.93</i>	167.86 <i>0.23</i>	168.62 <i>0.45</i>	170.50 <i>1.11</i>
II. Gross rent, fuel & lighting	22.17	126.31 <i>3.06</i>	131.07 <i>3.77</i>	138.41 <i>5.60</i>	146.99 <i>0.03</i>	147.01 <i>0.01</i>	147.39 <i>0.26</i>
III. Furniture, furnishing, household equipments & operation	2.58	146.30 <i>5.55</i>	155.49 <i>6.28</i>	168.05 <i>8.08</i>	180.82 <i>0.03</i>	180.89 <i>0.04</i>	182.38 <i>0.82</i>
IV. Medical care & health expenses	2.97	152.49 <i>3.68</i>	156.47 <i>2.61</i>	161.64 <i>3.30</i>	168.39 <i>0.07</i>	168.41 <i>0.01</i>	168.99 <i>0.34</i>
V. Transport & communication	7.07	182.41 <i>6.04</i>	192.53 <i>5.55</i>	201.38 <i>4.60</i>	207.55 <i>0.14</i>	207.66 <i>0.05</i>	207.96 <i>0.14</i>
VI. Recreation, entertainment, education & cultural services	6.40	141.60 <i>5.59</i>	157.05 <i>10.91</i>	163.51 <i>4.11</i>	165.28 <i>0.01</i>	165.52 <i>0.15</i>	165.73 <i>0.13</i>
VII. Misc. goods & services	3.22	144.80 <i>5.69</i>	152.62 <i>5.40</i>	159.93 <i>4.79</i>	168.02 <i>0.25</i>	168.21 <i>0.11</i>	171.23 <i>1.80</i>

Note : Figures in italics indicate percentage change over previous year/month

