

**Table 1. Consumer Price Index (CPI) And Inflation Rate
(Point To Point)**

(1995-96=100)

CPI Classification	2006-07	2007-08	2008-09	2008-09			2009-10		
				July	Aug	Sept	July	Aug	Sept
NATIONAL									
General index	176.06	193.54	206.43	206.86	207.27	210.14	214.01	216.99	219.80
<i>Inflation</i>	7.22	9.93	6.66	10.82	10.11	10.19	3.46	4.69	4.60
Food index	184.18	206.79	221.64	223.94	223.77	227.66	231.42	234.80	239.00
<i>Inflation</i>	8.12	12.28	7.18	13.92	12.36	12.07	3.34	4.93	4.98
Non-food index	165.79	176.26	186.67	184.44	185.72	187.10	191.33	194.16	195.10
<i>Inflation</i>	5.90	6.32	5.91	5.93	6.55	7.19	3.74	4.54	4.28
RURAL									
General index	177.42	195.14	208.46	209.01	209.53	212.72	215.71	218.43	221.21
<i>Inflation</i>	7.30	9.99	6.83	11.19	10.51	10.62	3.21	4.25	3.99
Food index	182.18	203.93	218.38	220.60	220.52	224.69	227.2	229.50	233.29
<i>Inflation</i>	7.96	11.94	7.09	13.82	12.34	12.13	2.99	4.07	3.83
Non-food index	169.33	180.19	191.59	189.31	190.84	192.38	196.17	199.62	200.66
<i>Inflation</i>	6.10	6.41	6.33	6.32	7.05	7.76	3.62	4.60	4.30
URBAN									
General index	172.73	189.65	201.49	201.62	201.75	203.85	209.87	213.48	216.38
<i>Inflation</i>	7.03	9.80	6.24	9.91	9.11	9.12	4.09	5.81	6.15
Food index	189.06	213.73	229.60	232.09	231.67	234.90	241.71	247.71	252.91
<i>Inflation</i>	8.54	13.05	7.43	14.17	12.40	11.93	4.14	6.92	7.67
Non-food index	157.17	166.69	174.69	172.57	173.24	174.25	179.53	180.85	181.57
<i>Inflation</i>	5.34	6.06	4.80	4.89	5.20	5.70	4.03	4.39	4.20

Fig-1: Annual Inflation Rate

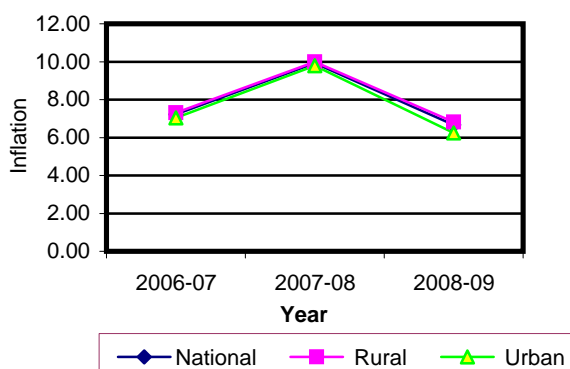


Fig-2: Monthly Inflation Rate

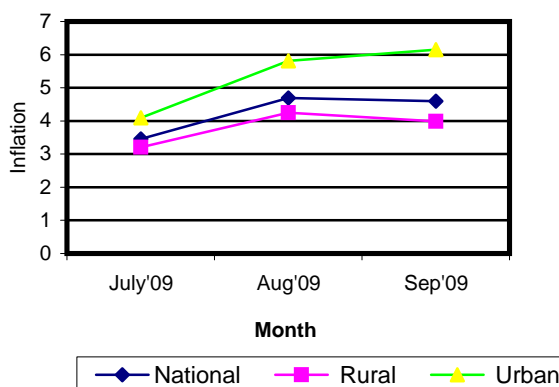


Table 2. Consumer Price Index (CPI) : National

(On Monthly Basis)

(1995-96=100)

CPI Classification	2006-07	2007-08	2008-09	2008-09			2009-10		
				July	Aug	Sept	July	Aug	Sept
General	176.06	193.54	206.43	206.86	207.27	210.14	214.01	216.99	219.80
	7.22	9.93	6.66	1.68	0.20	1.38	2.88	1.39	1.29
1. Food , beverage & tobacco	184.18	206.79	221.64	223.94	223.77	227.66	231.42	234.80	239.00
	8.12	12.28	7.18	1.07	-0.08	1.74	4.18	1.46	1.79
2. Non-food	165.79	176.26	186.67	184.44	185.72	187.10	191.33	194.16	195.10
	5.90	6.32	5.91	2.86	0.69	0.74	0.71	1.48	0.48
I. Clothing & footwear	156.79	164.53	173.10	168.56	168.92	171.36	177.20	177.99	180.20
	5.69	4.94	5.21	0.58	0.21	1.44	0.24	0.45	1.24
II. Gross rent, fuel & lighting	162.32	174.70	184.46	186.04	187.74	189.09	185.27	189.34	189.70
	6.78	7.63	5.59	5.30	0.91	0.72	0.93	2.20	0.19
III. Furniture, furnishing, household equipments & operation	162.61	178.56	194.75	186.10	189.43	190.57	208.21	210.21	211.93
	7.54	9.81	9.07	0.99	1.79	0.6	2.04	0.96	0.82
IV. Medical care & health expenses	178.49	185.66	189.25	187.78	187.9	187.93	193.35	197.40	198.44
	5.23	4.02	1.93	0.28	0.06	0.02	1.15	2.09	0.53
V. Transport & communication	201.15	211.01	222.12	219.90	220.50	220.94	227.44	231.53	232.17
	4.95	4.90	5.27	3.06	0.27	0.2	0.35	1.80	0.28
VI. Recreation, entertainment, education & cultural services	171.47	174.86	181.44	178.92	179.25	179.59	186.37	189.00	189.84
	3.66	1.98	3.76	0.47	0.18	0.19	0.27	1.41	0.44
VII. Misc. goods & services	151.44	166.69	188.84	177.66	180.02	183.41	204.24	205.36	206.43
	5.72	10.07	13.29	1.53	1.33	1.88	0.60	0.55	0.52

Note : Figures in italics indicate inflation over previous year/month

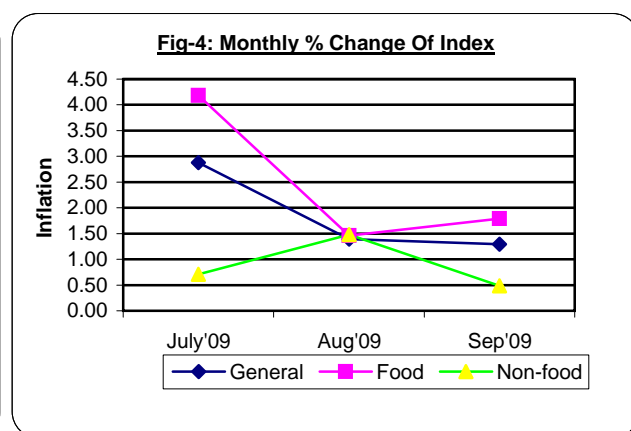
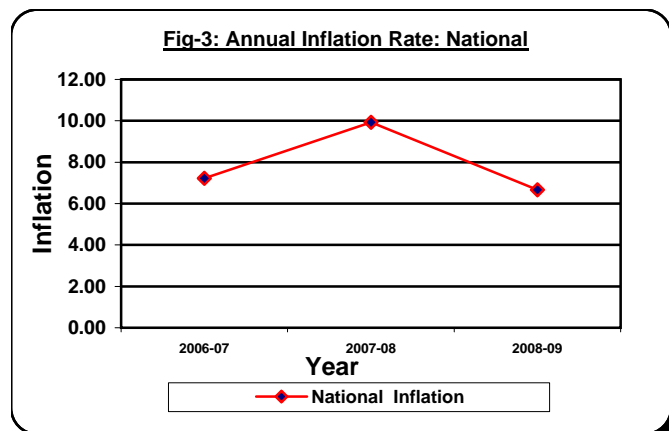


Table 3. Consumer Price Index (CPI) : Rural

(On Monthly Basis)

(1995-96=100)

CPI Classification	2006-07	2007-08	2008-09	2008-09			2009-10		
				July	Aug	Sept	July	Aug	Sept
General	177.42	195.14	208.46	209.01	209.53	212.72	215.71	218.43	221.21
	7.29	9.99	6.83	1.82	0.25	1.52	2.90	1.26	1.27
1. Food, beverage & tobacco	182.18	203.93	218.38	220.60	220.52	224.69	227.20	229.50	233.39
	7.95	11.94	7.09	1.09	-0.04	1.89	4.06	1.01	1.69
2. Non-food	169.33	180.19	191.59	189.31	190.84	192.38	196.17	199.62	200.66
	6.10	6.41	6.33	3.31	0.81	0.81	0.68	1.76	0.52
I. Clothing & footwear	155.88	162.08	169.68	165.85	166.18	168.05	173.47	174.20	176.97
	5.19	3.98	4.69	0.59	0.20	1.13	0.33	0.42	1.59
II. Gross rent, fuel & lighting	172.14	185.85	199.33	201.22	203.40	205.22	199.79	205.02	205.44
	7.17	7.96	7.25	6.80	1.08	0.89	0.95	2.62	0.20
III. Furniture, furnishing, household equipments & operation	160.38	174.31	189.12	179.88	183.81	184.86	203.21	203.42	204.53
	7.31	8.69	8.50	1.05	2.18	0.57	2.25	0.10	0.55
IV. Medical care & health expenses	185.41	191.72	194.47	193.21	193.26	193.29	197.57	202.22	202.37
	5.93	3.40	1.43	0.15	0.03	0.02	0.68	2.35	0.07
V. Transport & communication	201.06	211.49	219.63	216.72	217.31	217.75	224.43	229.88	230.49
	5.10	5.19	3.85	1.64	0.27	0.2	0.24	2.43	0.27
VI. Recreation, entertainment, education & cultural services	174.74	178.03	184.66	182.28	182.57	182.95	189.30	192.95	194.10
	3.49	1.88	3.72	0.57	0.16	0.21	0.53	1.93	0.60
VII. Misc. goods & services	147.95	164.03	184.85	174.00	176.33	179.50	200.86	202.02	203.18
	6.13	10.87	12.69	1.77	1.34	1.80	0.42	0.58	0.57

Note : Figures in italics indicate inflation over previous year/month

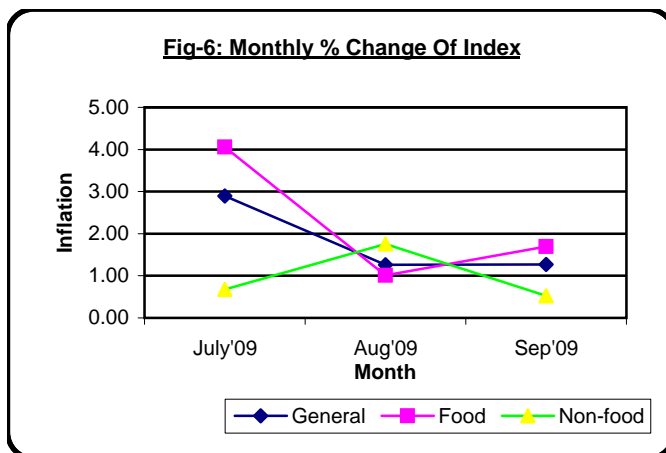
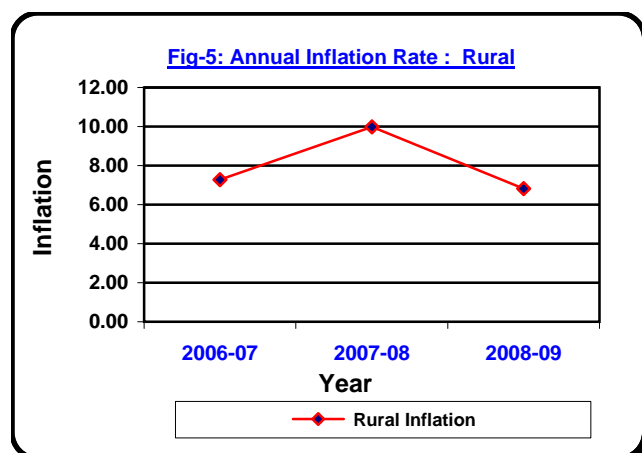


Table 4. Consumer Price Index (CPI) : Urban

(On Monthly Basis)

(1995-96=100)

CPI Classification	2006-07	2007-08	2008-09	2008-09			2009-10		
				July	Aug	Sept	July	Aug	Sept
General	172.73	189.65	201.49	201.62	201.75	209.85	209.87	213.48	216.38
	7.03	9.80	6.24	1.31	0.06	1.04	2.83	1.72	1.36
1. Food, beverage & tobacco	189.06	213.73	229.60	232.09	231.67	234.90	241.71	247.71	252.91
	8.54	13.05	7.43	1.03	-0.18	1.39	4.48	2.48	2.10
2. Non-food	157.17	166.69	174.69	172.57	173.24	174.25	179.53	180.85	181.57
	5.34	6.06	4.80	1.66	0.39	0.58	0.80	0.74	0.40
I. Clothing & footwear	159.02	170.51	181.42	175.17	175.58	179.41	186.30	187.23	188.06
	6.93	7.23	6.40	0.59	0.23	2.18	0.06	0.50	0.44
II. Gross rent, fuel & lighting	138.41	147.54	148.24	149.09	149.60	149.82	149.91	151.16	151.37
	5.60	6.60	0.47	0.68	0.34	0.15	0.87	0.83	0.14
III. Furniture, furnishing, household equipments & operation	168.05	188.92	208.46	201.26	203.12	204.49	220.39	226.75	229.96
	8.08	12.42	10.34	0.88	0.92	0.67	1.59	2.89	1.42
IV. Medical care & health expenses	161.64	170.90	176.54	174.54	174.83	174.88	183.08	185.66	188.87
	3.30	5.73	3.30	0.64	0.17	0.03	2.38	1.41	1.73
V. Transport & communication	201.38	209.84	228.18	227.66	228.26	228.71	234.77	235.54	236.25
	4.60	4.20	8.74	6.51	0.26	0.20	0.61	0.33	0.30
VI. Recreation, entertainment, education & cultural services	163.51	167.16	173.59	170.74	171.18	171.40	179.22	179.37	179.48
	4.11	2.23	3.85	0.23	0.26	0.13	0.39	0.08	0.06
VII. Misc. goods & services	159.93	173.16	198.58	186.58	189.01	192.94	212.48	213.51	214.35
	4.79	8.27	14.68	0.98	1.30	2.08	1.02	0.48	0.39

Note : Figures in italics indicate inflation over previous year/month

