

**Table 1. Consumer Price Index (CPI) And Inflation Rate
(Point To Point)**

(1995-96 = 100)

CPI Classification	2004-05	2005-06	2006-07	2007-08	2009		
					Mar	April	May
NATIONAL							
General index	153.23	164.21	176.06	193.54	204.65	204.99	205.78
<i>Inflation</i>	6.48	7.17	7.22	9.93	5.04	5.36	5.39
Food index	158.08	170.34	184.18	206.79	217.95	217.68	218.65
<i>Inflation</i>	7.91	7.76	8.12	12.28	4.49	4.80	4.89
Nonfood	147.14	156.56	165.79	176.26	187.58	189.00	189.57
<i>Inflation</i>	4.33	6.40	5.90	6.32	6.11	6.53	6.49
ALL RURAL							
General index	154.03	165.37	177.42	195.14	206.35	206.29	207.12
<i>Inflation</i>	6.62	7.36	7.30	9.99	5.06	5.21	5.31
Food index	156.82	168.77	182.18	203.93	214.66	213.63	214.55
<i>Inflation</i>	7.99	7.62	7.96	11.94	4.33	4.32	4.44
Nonfood	149.29	159.59	169.33	180.19	192.23	193.81	194.47
<i>Inflation</i>	4.27	6.90	6.10	6.41	6.46	6.92	6.98
ALL URBAN							
General index	151.29	161.39	172.73	189.65	200.51	201.82	202.52
<i>Inflation</i>	6.14	6.68	7.03	9.80	5.00	5.72	5.60
Food index	161.14	174.18	189.06	213.73	225.95	227.55	228.63
<i>Inflation</i>	7.71	8.09	8.54	13.05	4.86	5.91	5.94
Nonfood	141.90	149.20	157.17	166.69	176.27	177.30	177.63
<i>Inflation</i>	4.49	5.14	5.34	6.06	5.19	5.50	5.18

Fig-1: Annual Inflation Rate

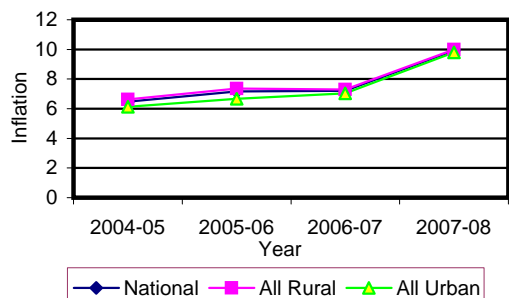


Fig-2: Monthly Inflation Rate (Point to Point)

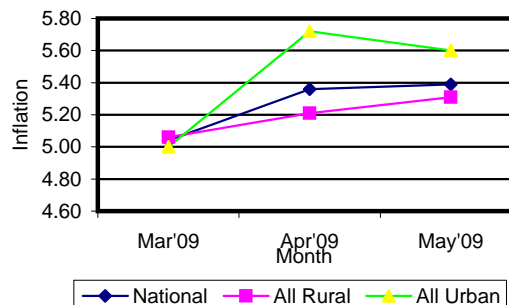


Table 2. Consumer Price Index (CPI) : National

(1995-96 = 100)

CPI Classification	2004-05	2005-06	2006-07	2007-08	2009		
					Mar	April	May
General	153.23 <i>6.48</i>	164.21 <i>7.17</i>	176.06 <i>7.22</i>	193.54 <i>9.93</i>	204.65 <i>0.31</i>	204.99 <i>0.17</i>	205.78 <i>0.39</i>
1. Food , beverage & tobacco	158.08 <i>7.90</i>	170.34 <i>7.76</i>	184.18 <i>8.12</i>	206.79 <i>12.28</i>	217.95 <i>0.03</i>	217.68 <i>-0.12</i>	218.65 <i>0.45</i>
2. Non-food of which	147.14 <i>4.33</i>	156.56 <i>6.40</i>	165.79 <i>5.90</i>	176.26 <i>6.32</i>	187.58 <i>0.79</i>	189.00 <i>0.76</i>	189.57 <i>0.30</i>
I. Clothing & footwear	142.15 <i>4.38</i>	148.35 <i>4.36</i>	156.79 <i>5.69</i>	164.53 <i>4.94</i>	175.75 <i>1.07</i>	176.33 <i>0.33</i>	176.54 <i>0.12</i>
II. Gross rent, fuel & lighting	141.43 <i>2.52</i>	152.02 <i>7.49</i>	162.32 <i>6.78</i>	174.7 <i>7.63</i>	183.19 <i>0.22</i>	183.51 <i>0.17</i>	183.53 <i>0.01</i>
III. Furniture, furnishing, household equipments & operation	143.18 <i>3.79</i>	151.21 <i>5.61</i>	162.61 <i>7.54</i>	178.56 <i>9.81</i>	200.03 <i>2.30</i>	201.93 <i>0.95</i>	203.46 <i>0.76</i>
IV. Medical care & health expenses	162.47 <i>5.25</i>	169.62 <i>4.40</i>	178.49 <i>5.23</i>	185.66 <i>4.02</i>	190.76 <i>0.43</i>	191.15 <i>0.20</i>	191.16 <i>0.01</i>
V. Transport & communication	179.94 <i>5.36</i>	191.66 <i>6.51</i>	201.15 <i>4.95</i>	211.01 <i>4.90</i>	224.48 <i>1.43</i>	224.70 <i>0.10</i>	225.80 <i>0.49</i>
VI. Recreation, entertainment, education & cultural services	150.24 <i>6.32</i>	165.42 <i>10.10</i>	171.47 <i>3.66</i>	174.86 <i>1.98</i>	181.25 <i>0.48</i>	185.86 <i>2.54</i>	186.07 <i>0.11</i>
VII. Misc. goods & services	137.78 <i>2.96</i>	143.25 <i>3.97</i>	151.44 <i>5.72</i>	166.69 <i>10.07</i>	192.65 <i>1.40</i>	198.58 <i>3.08</i>	201.51 <i>1.48</i>

Note : Figures in italics indicate percentage change over previous year/month

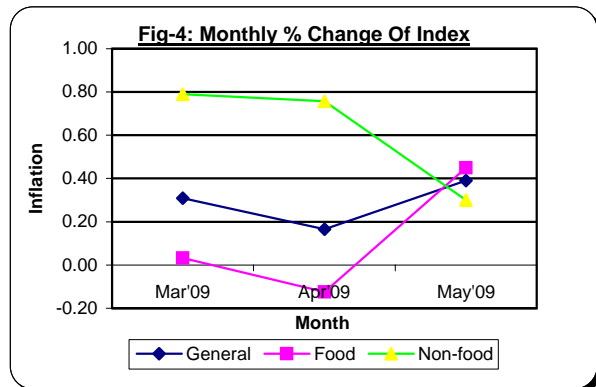
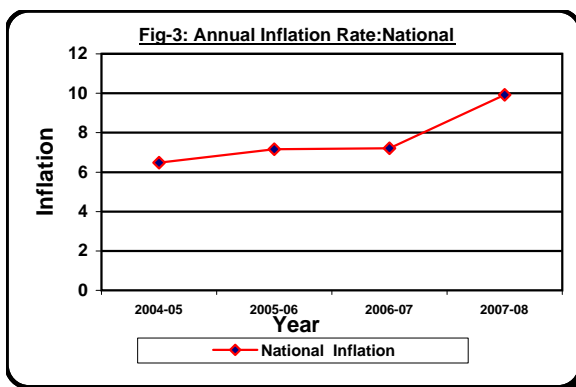


Table 3. Consumer Price Index (CPI) : All Rural

(1995-96 = 100)

CPI Classification	Weight	2005-06	2006-07	2007-08	2009		
					Mar	April	May
General	100.00	165.37	177.42	195.14	206.35	206.29	207.12
		<i>7.36</i>	<i>7.29</i>	<i>9.99</i>	<i>0.16</i>	<i>-0.03</i>	<i>0.40</i>
1. Food , beverage & tobacco	62.96	168.77	182.18	203.93	214.66	213.63	214.55
		<i>7.62</i>	<i>7.95</i>	<i>11.94</i>	<i>-0.11</i>	<i>-0.48</i>	<i>0.43</i>
2. Non-food of which	37.04	159.59	169.33	180.19	192.23	193.81	194.47
		<i>6.90</i>	<i>6.10</i>	<i>6.41</i>	<i>0.68</i>	<i>0.82</i>	<i>0.34</i>
I. Clothing & footwear	6.88	148.19	155.88	162.08	171.72	172.48	172.77
		<i>4.56</i>	<i>5.19</i>	<i>3.98</i>	<i>0.59</i>	<i>0.44</i>	<i>0.17</i>
II. Gross rent, fuel & lighting	14.69	160.63	172.14	185.85	197.61	197.90	197.91
		<i>8.80</i>	<i>7.17</i>	<i>7.96</i>	<i>0.24</i>	<i>0.15</i>	<i>0.01</i>
III. Furniture, furnishing, household equipments & operation	2.70	149.45	160.38	174.31	194.85	196.54	198.39
		<i>5.32</i>	<i>7.31</i>	<i>8.69</i>	<i>2.74</i>	<i>0.87</i>	<i>0.94</i>
IV. Medical care & health expenses	2.79	175.03	185.41	191.72	195.73	196.22	196.23
		<i>5.09</i>	<i>5.93</i>	<i>3.40</i>	<i>0.48</i>	<i>0.25</i>	<i>0.01</i>
V. Transport & communication	2.98	191.31	201.06	211.49	222.38	222.52	223.60
		<i>6.92</i>	<i>5.10</i>	<i>5.19</i>	<i>1.24</i>	<i>0.06</i>	<i>0.49</i>
VI. Recreation, entertainment, education & cultural services	3.20	168.85	174.74	178.03	183.93	188.92	189.17
		<i>9.80</i>	<i>3.49</i>	<i>1.88</i>	<i>0.17</i>	<i>2.71</i>	<i>0.13</i>
VII. Misc. goods & services	3.80	139.40	147.95	164.03	187.48	194.53	198.03
		<i>3.34</i>	<i>6.13</i>	<i>10.87</i>	<i>1.12</i>	<i>3.76</i>	<i>1.80</i>

Note : Figures in italics indicate percentage change over previous year/month

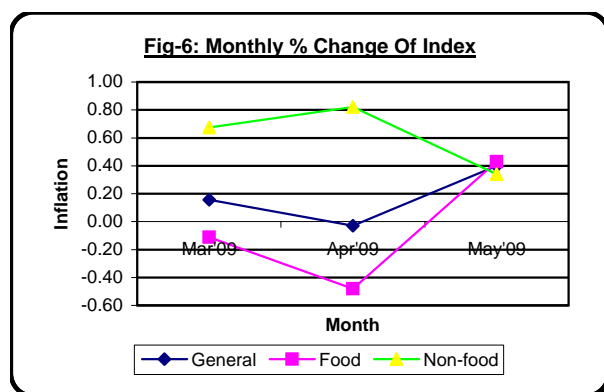
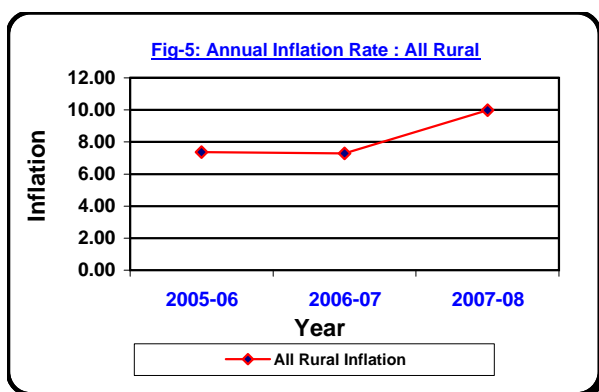


Table 4. Consumer Price Index (CPI) : All Urban

(1995-96 = 100)

CPI Classification	Weight	2005-06	2006-07	2007-08	2009		
					Mar	April	May
General	100.00	161.39	172.73	189.65	200.51	201.82	202.52
		6.68	7.03	9.80	0.69	0.65	0.35
1. Food , beverage & tobacco	48.80	174.18	189.06	213.73	225.95	227.55	228.63
		8.09	8.54	13.05	0.36	0.71	0.47
2. Non-food of which	51.20	149.20	157.17	166.69	176.27	177.30	177.63
		5.14	5.34	6.06	1.11	0.58	0.19
I. Clothing & footwear	6.79	148.72	159.02	170.51	185.58	185.70	185.73
		3.87	6.93	7.23	2.17	0.06	0.02
II. Gross rent, fuel & lighting	22.17	131.07	138.41	147.54	148.09	148.48	148.50
		3.77	5.60	6.60	0.16	0.26	0.01
III. Furniture, furnishing, household equipments & operation	2.58	155.49	168.05	188.92	212.66	215.04	215.82
		6.28	8.08	12.42	1.36	1.12	0.36
IV. Medical care & health expenses	2.97	156.47	161.64	170.90	178.65	178.79	178.82
		2.61	3.30	5.73	0.31	0.08	0.02
V. Transport & communication	7.07	192.53	201.38	209.84	229.59	230.00	231.17
		5.55	4.60	4.20	1.87	0.18	0.51
VI. Recreation, entertainment, education & cultural services	6.40	157.05	163.51	167.16	174.71	178.42	178.53
		10.91	4.11	2.23	1.28	2.12	0.06
VII. Misc. goods & services	3.22	152.62	159.93	173.16	205.23	208.45	209.98
		5.40	4.79	8.27	2.03	1.57	0.73

Note : Figures in italics indicate percentage change over previous year/month

