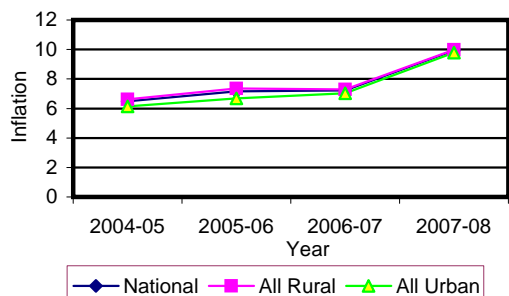


**Table 1. Consumer Price Index (CPI) And Inflation Rate  
(Point To Point)**

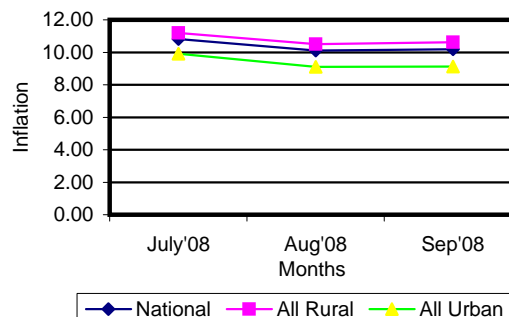
( 1995-96 = 100)

| CPI Classification | 2004-05 | 2005-06 | 2006-07 | 2007-08 | 2008   |        |        |
|--------------------|---------|---------|---------|---------|--------|--------|--------|
|                    |         |         |         |         | July   | Aug    | Sep    |
| <b>NATIONAL</b>    |         |         |         |         |        |        |        |
| General index      | 153.23  | 164.21  | 176.06  | 193.54  | 206.86 | 207.27 | 210.14 |
| <i>Inflation</i>   | 6.48    | 7.17    | 7.22    | 9.93    | 10.82  | 10.11  | 10.19  |
| Food index         | 158.08  | 170.34  | 184.18  | 206.79  | 223.94 | 223.77 | 227.66 |
| <i>Inflation</i>   | 7.91    | 7.76    | 8.12    | 12.28   | 13.92  | 12.36  | 12.07  |
| Nonfood            | 147.14  | 156.56  | 165.79  | 176.26  | 184.44 | 185.72 | 187.10 |
| <i>Inflation</i>   | 4.33    | 6.40    | 5.90    | 6.32    | 5.93   | 6.55   | 7.19   |
| <b>ALL RURAL</b>   |         |         |         |         |        |        |        |
| General index      | 154.03  | 165.37  | 177.42  | 195.14  | 209.01 | 209.53 | 212.72 |
| <i>Inflation</i>   | 6.62    | 7.36    | 7.30    | 9.99    | 11.19  | 10.51  | 10.62  |
| Food index         | 156.82  | 168.77  | 182.18  | 203.93  | 220.60 | 220.52 | 224.69 |
| <i>Inflation</i>   | 7.99    | 7.62    | 7.96    | 11.94   | 13.82  | 12.34  | 12.13  |
| Nonfood            | 149.29  | 159.59  | 169.33  | 180.19  | 189.31 | 190.84 | 192.38 |
| <i>Inflation</i>   | 4.27    | 6.90    | 6.10    | 6.41    | 6.32   | 7.05   | 7.76   |
| <b>ALL URBAN</b>   |         |         |         |         |        |        |        |
| General index      | 151.29  | 161.39  | 172.73  | 189.65  | 201.62 | 201.75 | 203.85 |
| <i>Inflation</i>   | 6.14    | 6.68    | 7.03    | 9.80    | 9.91   | 9.11   | 9.12   |
| Food index         | 161.14  | 174.18  | 189.06  | 213.73  | 232.09 | 231.67 | 234.90 |
| <i>Inflation</i>   | 7.71    | 8.09    | 8.54    | 13.05   | 14.17  | 12.40  | 11.93  |
| Nonfood            | 141.90  | 149.20  | 157.17  | 166.69  | 172.57 | 173.24 | 174.25 |
| <i>Inflation</i>   | 4.49    | 5.14    | 5.34    | 6.06    | 4.89   | 5.20   | 5.70   |

**Fig-1: Annual Inflation Rate**



**Fig-2: Monthly inflation Rate (Point to Point)**

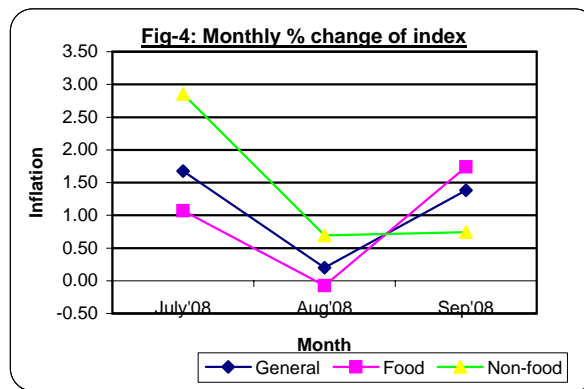
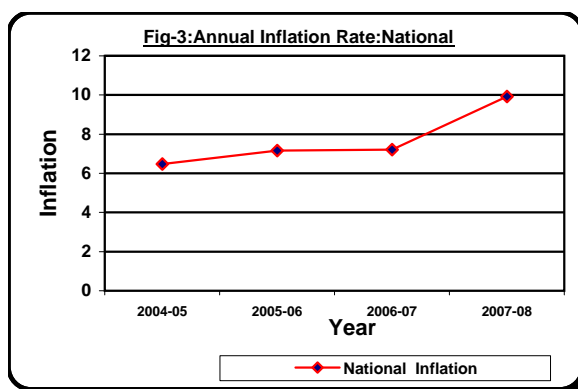


**Table 2. Consumer Price Index (CPI) : National**

( 1995-96 = 100)

| CPI Classification   | 2004-05        | 2005-06         | 2006-07        | 2007-08         | 2008           |                 |                |
|--|----------------|-----------------|----------------|-----------------|----------------|-----------------|----------------|
|  |                |                 |                |                 | July           | Aug             | Sep            |
| <b>General</b>   | 153.23<br>6.48 | 164.21<br>7.17  | 176.06<br>7.22 | 193.54<br>9.93  | 206.86<br>1.68 | 207.27<br>0.20  | 210.14<br>1.38 |
| 1. <b>Food</b> , beverage & tobacco                          | 158.08<br>7.90 | 170.34<br>7.76  | 184.18<br>8.12 | 206.79<br>12.28 | 223.94<br>1.07 | 223.77<br>-0.08 | 227.66<br>1.74 |
| 2. <b>Non-food</b> of which                                  | 147.14<br>4.33 | 156.56<br>6.40  | 165.79<br>5.90 | 176.26<br>6.32  | 184.44<br>2.86 | 185.72<br>0.69  | 187.10<br>0.74 |
| I. Clothing & footwear                                       | 142.15<br>4.38 | 148.35<br>4.36  | 156.79<br>5.69 | 164.53<br>4.94  | 168.56<br>0.58 | 168.92<br>0.21  | 171.36<br>1.44 |
| II. Gross rent, fuel & lighting                              | 141.43<br>2.52 | 152.02<br>7.49  | 162.32<br>6.78 | 174.7<br>7.63   | 186.04<br>5.30 | 187.74<br>0.91  | 189.09<br>0.72 |
| III. Furniture, furnishing, household equipments & operation | 143.18<br>3.79 | 151.21<br>5.61  | 162.61<br>7.54 | 178.56<br>9.81  | 186.10<br>0.99 | 189.43<br>1.79  | 190.57<br>0.60 |
| IV. Medical care & health expenses                           | 162.47<br>5.25 | 169.62<br>4.40  | 178.49<br>5.23 | 185.66<br>4.02  | 187.78<br>0.28 | 187.90<br>0.06  | 187.93<br>0.02 |
| V. Transport & communication                                 | 179.94<br>5.36 | 191.66<br>6.51  | 201.15<br>4.95 | 211.01<br>4.90  | 219.90<br>3.06 | 220.50<br>0.27  | 220.94<br>0.20 |
| VI. Recreation, entertainment, education & cultural services | 150.24<br>6.32 | 165.42<br>10.10 | 171.47<br>3.66 | 174.86<br>1.98  | 178.92<br>0.47 | 179.25<br>0.18  | 179.59<br>0.19 |
| VII. Misc. goods & services                                  | 137.78<br>2.96 | 143.25<br>3.97  | 151.44<br>5.72 | 166.69<br>10.07 | 177.66<br>1.53 | 180.02<br>1.33  | 183.41<br>1.88 |

**Note :** Figures in italics indicate percentage change over previous year/month

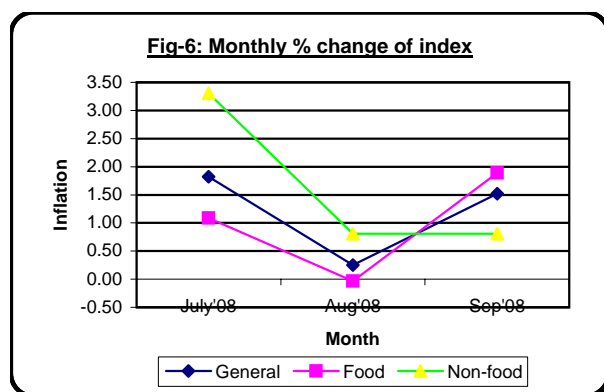
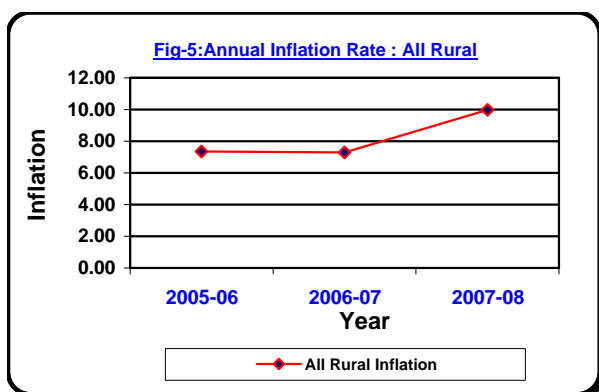


**Table 3. Consumer Price Index (CPI) : All Rural**

( 1995-96 = 100)

| CPI Classification   | Weight | 2005-06 | 2006-07 | 2007-08 | 2008   |        |        |
|--|--------|---------|---------|---------|--------|--------|--------|
|  |        |         |         |         | July   | Aug    | Sep    |
| <b>General</b>   | 100.00 | 165.37  | 177.42  | 195.14  | 209.01 | 209.53 | 212.72 |
|  |        | 7.36    | 7.29    | 9.99    | 1.82   | 0.25   | 1.52   |
| 1. <b>Food</b> , beverage & tobacco                          | 62.96  | 168.77  | 182.18  | 203.93  | 220.60 | 220.52 | 224.69 |
|  |        | 7.62    | 7.95    | 11.94   | 1.09   | -0.04  | 1.89   |
| 2. <b>Non-food</b> of which                                  | 37.04  | 159.59  | 169.33  | 180.19  | 189.31 | 190.84 | 192.38 |
|  |        | 6.90    | 6.10    | 6.41    | 3.31   | 0.81   | 0.81   |
| I. Clothing & footwear                                       | 6.88   | 148.19  | 155.88  | 162.08  | 165.85 | 166.18 | 168.05 |
|  |        | 4.56    | 5.19    | 3.98    | 0.59   | 0.20   | 1.13   |
| II. Gross rent, fuel & lighting                              | 14.69  | 160.63  | 172.14  | 185.85  | 201.22 | 203.40 | 205.22 |
|  |        | 8.80    | 7.17    | 7.96    | 6.80   | 1.08   | 0.89   |
| III. Furniture, furnishing, household equipments & operation | 2.70   | 149.45  | 160.38  | 174.31  | 179.88 | 183.81 | 184.86 |
|  |        | 5.32    | 7.31    | 8.69    | 1.05   | 2.18   | 0.57   |
| IV. Medical care & health expenses                           | 2.79   | 175.03  | 185.41  | 191.72  | 193.21 | 193.26 | 193.29 |
|  |        | 5.09    | 5.93    | 3.40    | 0.15   | 0.03   | 0.02   |
| V. Transport & communication                                 | 2.98   | 191.31  | 201.06  | 211.49  | 216.72 | 217.31 | 217.75 |
|  |        | 6.92    | 5.10    | 5.19    | 1.64   | 0.27   | 0.20   |
| VI. Recreation, entertainment, education & cultural services | 3.20   | 168.85  | 174.74  | 178.03  | 182.28 | 182.57 | 182.95 |
|  |        | 9.80    | 3.49    | 1.88    | 0.57   | 0.16   | 0.21   |
| VII. Misc. goods & services                                  | 3.80   | 139.40  | 147.95  | 164.03  | 174.00 | 176.33 | 179.50 |
|  |        | 3.34    | 6.13    | 10.87   | 1.77   | 1.34   | 1.80   |

**Note :** Figures in italics indicate percentage change over previous year/month



**Table 4. Consumer Price Index (CPI) : All Urban**

( 1995-96 = 100)

| CPI Classification   | Weight | 2005-06 | 2006-07 | 2007-08 | 2008   |        |        |
|--|--------|---------|---------|---------|--------|--------|--------|
|  |        |         |         |         | July   | Aug    | Sep    |
| <b>General</b>   | 100.00 | 161.39  | 172.73  | 189.65  | 201.62 | 201.75 | 203.85 |
|  |        | 6.68    | 7.03    | 9.80    | 1.31   | 0.06   | 1.04   |
| 1. <b>Food</b> , beverage & tobacco                          | 48.80  | 174.18  | 189.06  | 213.73  | 232.09 | 231.67 | 234.90 |
|  |        | 8.09    | 8.54    | 13.05   | 1.03   | -0.18  | 1.39   |
| 2. <b>Non-food</b> of which                                  | 51.20  | 149.20  | 157.17  | 166.69  | 172.57 | 173.24 | 174.25 |
|  |        | 5.14    | 5.34    | 6.06    | 1.66   | 0.39   | 0.58   |
| I. Clothing & footwear                                       | 6.79   | 148.72  | 159.02  | 170.51  | 175.17 | 175.58 | 179.41 |
|  |        | 3.87    | 6.93    | 7.23    | 0.59   | 0.23   | 2.18   |
| II. Gross rent, fuel & lighting                              | 22.17  | 131.07  | 138.41  | 147.54  | 149.09 | 149.60 | 149.82 |
|  |        | 3.77    | 5.60    | 6.60    | 0.68   | 0.34   | 0.15   |
| III. Furniture, furnishing, household equipments & operation | 2.58   | 155.49  | 168.05  | 188.92  | 201.26 | 203.12 | 204.49 |
|  |        | 6.28    | 8.08    | 12.42   | 0.88   | 0.92   | 0.67   |
| IV. Medical care & health expenses                           | 2.97   | 156.47  | 161.64  | 170.90  | 174.54 | 174.83 | 174.88 |
|  |        | 2.61    | 3.30    | 5.73    | 0.64   | 0.17   | 0.03   |
| V. Transport & communication                                 | 7.07   | 192.53  | 201.38  | 209.84  | 227.66 | 228.26 | 228.71 |
|  |        | 5.55    | 4.60    | 4.20    | 6.51   | 0.26   | 0.20   |
| VI. Recreation, entertainment, education & cultural services | 6.40   | 157.05  | 163.51  | 167.16  | 170.74 | 171.18 | 171.40 |
|  |        | 10.91   | 4.11    | 2.23    | 0.23   | 0.26   | 0.13   |
| VII. Misc. goods & services                                  | 3.22   | 152.62  | 159.93  | 173.16  | 186.58 | 189.01 | 192.94 |
|  |        | 5.40    | 4.79    | 8.27    | 0.98   | 1.30   | 2.08   |

**Note :** Figures in italics indicate percentage change over previous year/month

