

**Table 1 Consumer Price Index (CPI) And Inflation Rate
(Point To Point)**

(1995-96 = 100)

CPI Classification	2003-04	2004-05	2005-06	2006-07	2008		
					Feb	Mar	April
NATIONAL							
General index	143.90	153.23	164.21	176.06	192.81	194.83	194.57
<i>Inflation</i>	5.83	6.48	7.17	7.22	10.16	10.06	7.66
Food index	146.50	158.08	170.34	184.18	205.25	208.58	207.71
<i>Inflation</i>	6.93	7.91	7.76	8.12	12.72	12.92	9.82
Nonfood	141.03	147.14	156.56	165.79	176.69	176.78	177.42
<i>Inflation</i>	4.37	4.33	6.40	5.90	6.26	5.63	4.16
ALL RURAL							
General index	144.46	154.03	165.37	177.42	194.17	196.42	196.07
<i>Inflation</i>	5.77	6.62	7.36	7.30	10.18	10.08	7.68
Food index	145.22	156.82	168.77	182.18	202.21	205.75	204.78
<i>Inflation</i>	6.55	7.99	7.62	7.96	12.35	12.54	9.76
Nonfood	143.18	149.29	159.59	169.33	180.49	180.56	181.26
<i>Inflation</i>	4.47	4.27	6.90	6.10	6.28	5.60	3.91
ALL URBAN							
General index	142.54	151.29	161.39	172.73	189.51	190.96	190.90
<i>Inflation</i>	5.99	6.14	6.68	7.03	10.14	10.02	7.59
Food index	149.60	161.14	174.18	189.06	212.66	215.48	214.85
<i>Inflation</i>	7.80	7.71	8.09	8.54	13.59	13.81	9.95
Nonfood	135.80	141.90	149.20	157.17	167.44	167.58	168.06
<i>Inflation</i>	4.14	4.49	5.14	5.34	6.23	5.70	4.83

Fig-1: Annual Inflation Rate

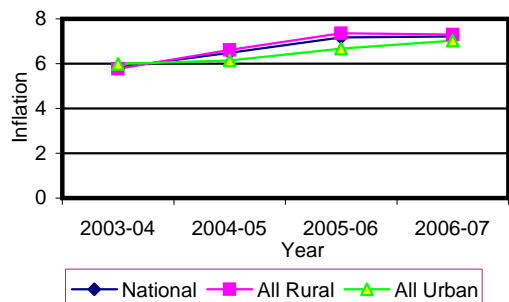


Fig-2: Monthly inflation Rate
(Point to Point)

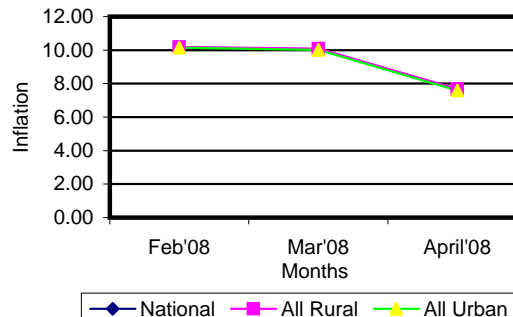


Table 2 Consumer Price Index (CPI) : National

(1995-96 = 100)

CPI Classification	2003-04	2004-05	2005-06	2006-07	2008		
					Feb	Mar	April
General	143.90 <i>5.83</i>	153.23 <i>6.48</i>	164.21 <i>7.17</i>	176.06 <i>7.22</i>	192.81 <i>0.22</i>	194.83 <i>1.05</i>	194.57 <i>-0.13</i>
1. Food , beverage & tobacco	146.50 <i>6.93</i>	158.08 <i>7.90</i>	170.34 <i>7.76</i>	184.18 <i>8.12</i>	205.25 <i>0.32</i>	208.58 <i>1.62</i>	207.71 <i>-0.42</i>
2. Non-food of which	141.03 <i>4.37</i>	147.14 <i>4.33</i>	156.56 <i>6.40</i>	165.79 <i>5.90</i>	176.69 <i>0.06</i>	176.78 <i>0.05</i>	177.42 <i>0.36</i>
I. Clothing & footwear	136.25 <i>4.37</i>	142.15 <i>4.38</i>	148.35 <i>4.36</i>	156.79 <i>5.69</i>	164.59 <i>0.00</i>	164.68 <i>0.05</i>	165.25 <i>0.35</i>
II. Gross rent, fuel & lighting	136.19 <i>3.80</i>	141.43 <i>2.52</i>	152.02 <i>7.49</i>	162.32 <i>6.78</i>	174.95 <i>0.02</i>	174.98 <i>0.02</i>	175.76 <i>0.45</i>
III. Furniture, furnishing, household equipments & operation	137.95 <i>4.25</i>	143.18 <i>3.79</i>	151.21 <i>5.61</i>	162.61 <i>7.54</i>	180.63 <i>0.43</i>	180.67 <i>0.02</i>	181.34 <i>0.37</i>
IV. Medical care & health expenses	154.36 <i>6.27</i>	162.47 <i>5.25</i>	169.62 <i>4.40</i>	178.49 <i>5.23</i>	186.08 <i>0.01</i>	186.11 <i>0.02</i>	186.25 <i>0.08</i>
V. Transport & communication	170.79 <i>7.06</i>	179.94 <i>5.36</i>	191.66 <i>6.51</i>	201.15 <i>4.95</i>	211.72 <i>0.11</i>	211.77 <i>0.02</i>	211.88 <i>0.05</i>
VI. Recreation, entertainment, education & cultural services	141.31 <i>3.19</i>	150.24 <i>6.32</i>	165.42 <i>10.10</i>	171.47 <i>3.66</i>	175.19 <i>0.02</i>	175.25 <i>0.03</i>	176.21 <i>0.55</i>
VII. Misc. goods & services	133.82 <i>3.42</i>	137.78 <i>2.96</i>	143.25 <i>3.97</i>	151.44 <i>5.72</i>	167.40 <i>0.11</i>	168.00 <i>0.36</i>	168.76 <i>0.45</i>

Note : Figures in italics indicate percentage change over previous year/month

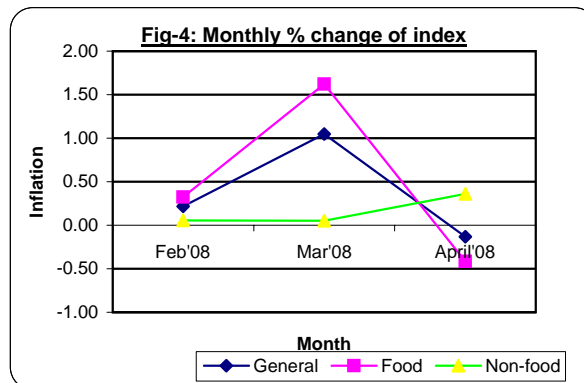
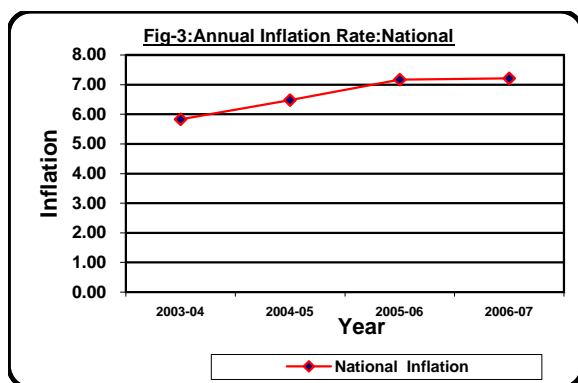


Table 3 Consumer Price Index (CPI) : All Rural

(1995-96 = 100)

CPI Classification	Weight	2004-05	2005-06	2006-07	2008		
					Feb	Mar	April
General	100.00	154.03	165.37	177.42	194.17	196.42	196.07
		<i>6.62</i>	<i>7.36</i>	<i>7.29</i>	<i>0.18</i>	<i>1.16</i>	<i>-0.18</i>
1. Food , beverage & tobacco	62.96	156.82	168.77	182.18	202.21	205.75	204.78
		<i>7.99</i>	<i>7.62</i>	<i>7.95</i>	<i>0.25</i>	<i>1.75</i>	<i>-0.47</i>
2. Non-food of which	37.04	149.29	159.59	169.33	180.49	180.56	181.26
		<i>4.27</i>	<i>6.90</i>	<i>6.10</i>	<i>0.03</i>	<i>0.04</i>	<i>0.39</i>
I. Clothing & footwear	6.88	141.73	148.19	155.88	162.04	162.17	162.91
		<i>4.05</i>	<i>4.56</i>	<i>5.19</i>	<i>-0.02</i>	<i>0.08</i>	<i>0.46</i>
II. Gross rent, fuel & lighting	14.69	147.64	160.63	172.14	186.12	186.16	187.20
		<i>4.13</i>	<i>8.80</i>	<i>7.17</i>	<i>0.03</i>	<i>0.02</i>	<i>0.56</i>
III. Furniture, furnishing, household equipments & operation	2.70	141.90	149.45	160.38	174.68	174.71	175.42
		<i>3.07</i>	<i>5.32</i>	<i>7.31</i>	<i>-0.01</i>	<i>0.02</i>	<i>0.41</i>
IV. Medical care & health expenses	2.79	166.56	175.03	185.41	191.74	191.75	191.94
		<i>5.85</i>	<i>5.09</i>	<i>5.93</i>	<i>0.00</i>	<i>0.01</i>	<i>0.10</i>
V. Transport & communication	2.98	178.92	191.31	201.06	211.90	211.93	212.00
		<i>5.07</i>	<i>6.92</i>	<i>5.10</i>	<i>0.10</i>	<i>0.01</i>	<i>0.03</i>
VI. Recreation, entertainment, education & cultural services	3.20	153.78	168.85	174.74	178.37	178.42	178.98
		<i>6.58</i>	<i>9.80</i>	<i>3.49</i>	<i>0.02</i>	<i>0.03</i>	<i>0.31</i>
VII. Misc. goods & services	3.80	134.90	139.40	147.95	165.14	165.29	165.67
		<i>1.80</i>	<i>3.34</i>	<i>6.13</i>	<i>0.02</i>	<i>0.09</i>	<i>0.23</i>

Note : Figures in italics indicate percentage change over previous year/month

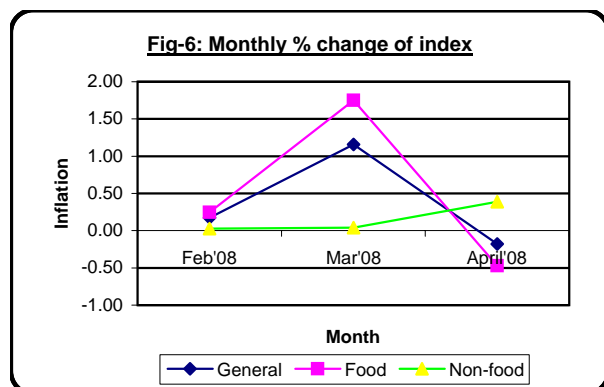
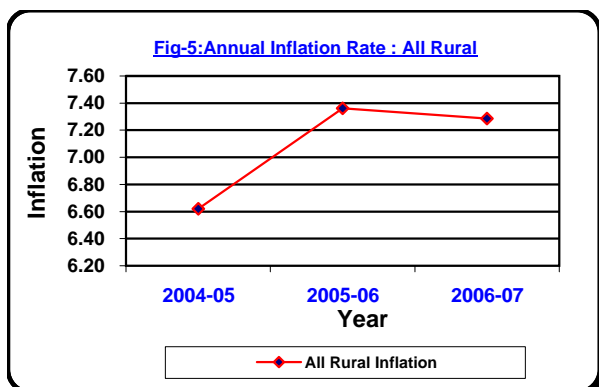


Table 4 Consumer Price Index (CPI) : All Urban

(1995-96 = 100)

CPI Classification	Weight	2004-05	2005-06	2006-07	2008		
					Feb	Mar	April
General	100.00	151.29 <i>6.14</i>	161.39 <i>6.68</i>	172.73 <i>7.03</i>	189.51 <i>0.33</i>	190.96 <i>0.77</i>	190.90 <i>-0.03</i>
1. Food , beverage & tobacco	48.80	161.14 <i>7.71</i>	174.18 <i>8.09</i>	189.06 <i>8.54</i>	212.66 <i>0.49</i>	215.48 <i>1.33</i>	214.85 <i>-0.29</i>
2. Non-food of which	51.20	141.90 <i>4.49</i>	149.20 <i>5.14</i>	157.17 <i>5.34</i>	167.44 <i>0.13</i>	167.58 <i>0.08</i>	168.06 <i>0.29</i>
I. Clothing & footwear	6.79	143.18 <i>4.99</i>	148.72 <i>3.87</i>	159.02 <i>6.93</i>	170.79 <i>0.04</i>	170.80 <i>0.01</i>	170.96 <i>0.09</i>
II. Gross rent, fuel & lighting	22.17	126.31 <i>3.06</i>	131.07 <i>3.77</i>	138.41 <i>5.60</i>	147.75 <i>0.00</i>	147.76 <i>0.01</i>	147.89 <i>0.09</i>
III. Furniture, furnishing, household equipments & operation	2.58	146.30 <i>5.55</i>	155.49 <i>6.28</i>	168.05 <i>8.08</i>	195.11 <i>1.40</i>	195.20 <i>0.05</i>	195.75 <i>0.28</i>
IV. Medical care & health expenses	2.97	152.49 <i>3.68</i>	156.47 <i>2.61</i>	161.64 <i>3.30</i>	172.31 <i>0.02</i>	172.37 <i>0.03</i>	172.40 <i>0.02</i>
V. Transport & communication	7.07	182.41 <i>6.04</i>	192.53 <i>5.55</i>	201.38 <i>4.60</i>	211.28 <i>0.13</i>	211.38 <i>0.05</i>	211.60 <i>0.10</i>
VI. Recreation, entertainment, education & cultural services	6.40	141.60 <i>5.59</i>	157.05 <i>10.91</i>	163.51 <i>4.11</i>	167.46 <i>0.00</i>	167.52 <i>0.04</i>	169.48 <i>1.17</i>
VII. Misc. goods & services	3.22	144.80 <i>5.69</i>	152.62 <i>5.40</i>	159.93 <i>4.79</i>	172.90 <i>0.30</i>	174.61 <i>0.99</i>	176.29 <i>0.96</i>

Note : Figures in italics indicate percentage change over previous year/month

