

**Table 1 Consumer Price Index (CPI) And Inflation Rate  
(Point To Point)**

( 1995-96 = 100)

CPI Classification	2003-04	2004-05	2005-06	2006-07	2008		
					Jan	Feb	Mar
<b>NATIONAL</b>							
General index	143.90	153.23	164.21	176.06	192.39	192.81	194.83
<i>Inflation</i>	5.83	6.48	7.17	7.22	11.43	10.16	10.06
Food index	146.50	158.08	170.34	184.18	204.59	205.25	208.58
<i>Inflation</i>	6.93	7.91	7.76	8.12	14.20	12.72	12.92
Nonfood	141.03	147.14	156.56	165.79	176.59	176.69	176.78
<i>Inflation</i>	4.37	4.33	6.40	5.90	7.21	6.26	5.63
<b>ALL RURAL</b>							
General index	144.46	154.03	165.37	177.42	193.83	194.17	196.42
<i>Inflation</i>	5.77	6.62	7.36	7.30	11.49	10.18	10.08
Food index	145.22	156.82	168.77	182.18	201.71	202.21	205.75
<i>Inflation</i>	6.55	7.99	7.62	7.96	13.86	12.35	12.54
Nonfood	143.18	149.29	159.59	169.33	180.44	180.49	180.56
<i>Inflation</i>	4.47	4.27	6.90	6.10	7.25	6.28	5.60
<b>ALL URBAN</b>							
General index	142.54	151.29	161.39	172.73	188.88	189.51	190.96
<i>Inflation</i>	5.99	6.14	6.68	7.03	11.28	10.14	10.02
Food index	149.60	161.14	174.18	189.06	211.62	212.66	215.48
<i>Inflation</i>	7.80	7.71	8.09	8.54	15.00	13.59	13.81
Nonfood	135.80	141.90	149.20	157.17	167.22	167.44	167.58
<i>Inflation</i>	4.14	4.49	5.14	5.34	7.10	6.23	5.70

Fig-1: Annual Inflation Rate

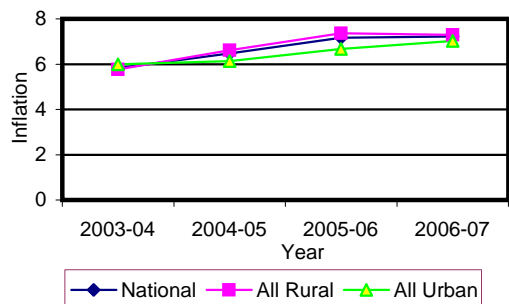
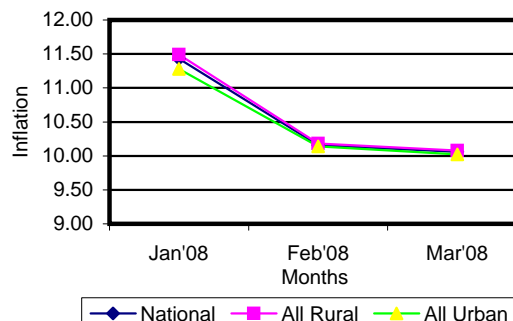


Fig-2: Monthly inflation Rate  
(Point to Point)

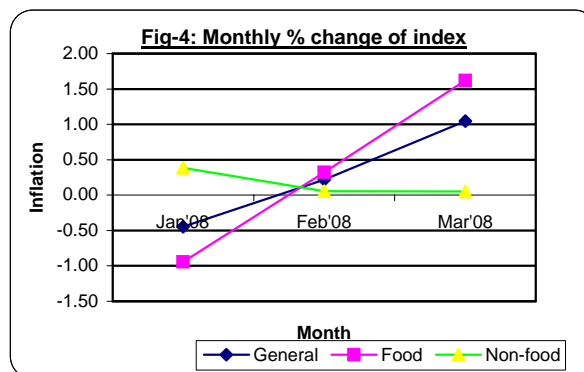
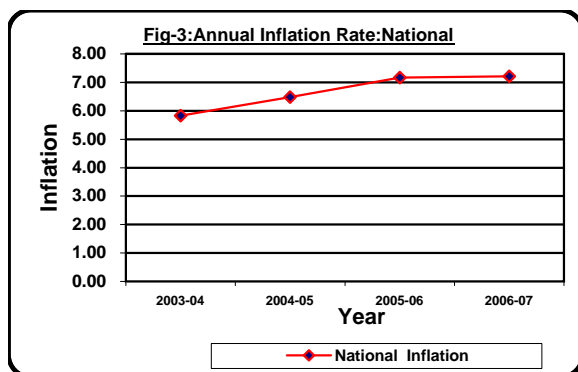


## Table 2 Consumer Price Index (CPI) : National

( 1995-96 = 100)

CPI Classification	2003-04	2004-05	2005-06	2006-07	2008		
					Jan	Feb	Mar
<b>General</b>	143.90 <i>5.83</i>	153.23 <i>6.48</i>	164.21 <i>7.17</i>	176.06 <i>7.22</i>	192.39 <i>-0.45</i>	192.81 <i>0.22</i>	194.83 <i>1.05</i>
1. <b>Food</b> , beverage & tobacco	146.50 <i>6.93</i>	158.08 <i>7.90</i>	170.34 <i>7.76</i>	184.18 <i>8.12</i>	204.59 <i>-0.94</i>	205.25 <i>0.32</i>	208.58 <i>1.62</i>
2. <b>Non-food</b> of which	141.03 <i>4.37</i>	147.14 <i>4.33</i>	156.56 <i>6.40</i>	165.79 <i>5.90</i>	176.59 <i>0.39</i>	176.69 <i>0.06</i>	176.78 <i>0.05</i>
I. Clothing & footwear	136.25 <i>4.37</i>	142.15 <i>4.38</i>	148.35 <i>4.36</i>	156.79 <i>5.69</i>	164.59 <i>0.05</i>	164.59 <i>0.00</i>	164.68 <i>0.05</i>
II. Gross rent, fuel & lighting	136.19 <i>3.80</i>	141.43 <i>2.52</i>	152.02 <i>7.49</i>	162.32 <i>6.78</i>	174.91 <i>0.22</i>	174.95 <i>0.02</i>	174.98 <i>0.02</i>
III. Furniture, furnishing, household equipments & operation	137.95 <i>4.25</i>	143.18 <i>3.79</i>	151.21 <i>5.61</i>	162.61 <i>7.54</i>	179.85 <i>1.40</i>	180.63 <i>0.43</i>	180.67 <i>0.02</i>
IV. Medical care & health expenses	154.36 <i>6.27</i>	162.47 <i>5.25</i>	169.62 <i>4.40</i>	178.49 <i>5.23</i>	186.07 <i>0.03</i>	186.08 <i>0.01</i>	186.11 <i>0.02</i>
V. Transport & communication	170.79 <i>7.06</i>	179.94 <i>5.36</i>	191.66 <i>6.51</i>	201.15 <i>4.95</i>	211.48 <i>0.61</i>	211.72 <i>0.11</i>	211.77 <i>0.02</i>
VI. Recreation, entertainment, education & cultural services	141.31 <i>3.19</i>	150.24 <i>6.32</i>	165.42 <i>10.10</i>	171.47 <i>3.66</i>	175.16 <i>0.57</i>	175.19 <i>0.02</i>	175.25 <i>0.03</i>
VII. Misc. goods & services	133.82 <i>3.42</i>	137.78 <i>2.96</i>	143.25 <i>3.97</i>	151.44 <i>5.72</i>	167.22 <i>0.80</i>	167.40 <i>0.11</i>	168.00 <i>0.36</i>

**Note :** Figures in italics indicate percentage change over previous year/month

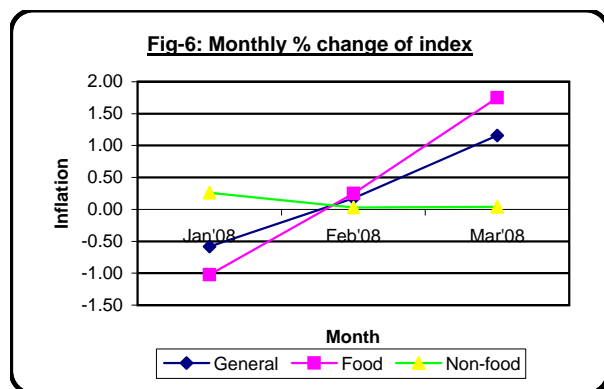
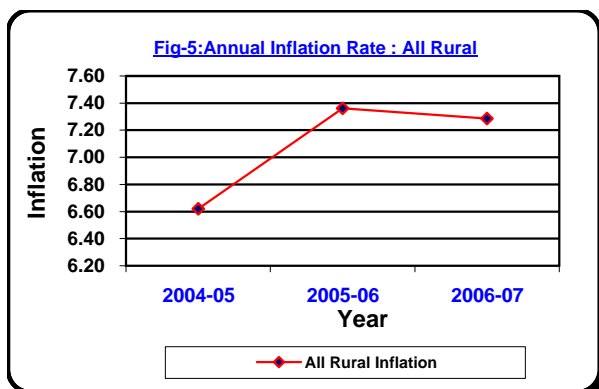


**Table 3 Consumer Price Index (CPI) : All Rural**

( 1995-96 = 100)

CPI Classification	Weight	2004-05	2005-06	2006-07	2008		
					Jan	Feb	Mar
<b>General</b>	100.00	154.03	165.37	177.42	193.83	194.17	196.42
		6.62	7.36	7.29	-0.58	0.18	1.16
1. <b>Food</b> , beverage & tobacco	62.96	156.82	168.77	182.18	201.71	202.21	205.75
		7.99	7.62	7.95	-1.03	0.25	1.75
2. <b>Non-food</b> of which	37.04	149.29	159.59	169.33	180.44	180.49	180.56
		4.27	6.90	6.10	0.26	0.03	0.04
I. Clothing & footwear	6.88	141.73	148.19	155.88	162.07	162.04	162.17
		4.05	4.56	5.19	0.06	-0.02	0.08
II. Gross rent, fuel & lighting	14.69	147.64	160.63	172.14	186.06	186.12	186.16
		4.13	8.80	7.17	0.22	0.03	0.02
III. Furniture, furnishing, household equipments & operation	2.70	141.90	149.45	160.38	174.69	174.68	174.71
		3.07	5.32	7.31	0.29	-0.01	0.02
IV. Medical care & health expenses	2.79	166.56	175.03	185.41	191.74	191.74	191.75
		5.85	5.09	5.93	0.03	0.00	0.01
V. Transport & communication	2.98	178.92	191.31	201.06	211.68	211.90	211.93
		5.07	6.92	5.10	0.27	0.10	0.01
VI. Recreation, entertainment, education & cultural services	3.20	153.78	168.85	174.74	178.33	178.37	178.42
		6.58	9.80	3.49	0.45	0.02	0.03
VII. Misc. goods & services	3.80	134.90	139.40	147.95	165.10	165.14	165.29
		1.80	3.34	6.13	0.86	0.02	0.09

**Note :** Figures in italics indicate percentage change over previous year/month



### Table 4 Consumer Price Index (CPI) : All Urban

( 1995-96 = 100)

CPI Classification	Weight	2004-05	2005-06	2006-07	2008		
					Jan	Feb	Mar
<b>General</b>	100.00	151.29	161.39	172.73	188.88	189.51	190.96
		<i>6.14</i>	<i>6.68</i>	<i>7.03</i>	<i>-0.10</i>	<i>0.33</i>	<i>0.77</i>
1. <b>Food</b> , beverage & tobacco	48.80	161.14	174.18	189.06	211.62	212.66	215.48
		<i>7.71</i>	<i>8.09</i>	<i>8.54</i>	<i>-0.75</i>	<i>0.49</i>	<i>1.33</i>
2. <b>Non-food</b> of which	51.20	141.90	149.20	157.17	167.22	167.44	167.58
		<i>4.49</i>	<i>5.14</i>	<i>5.34</i>	<i>0.72</i>	<i>0.13</i>	<i>0.08</i>
I. Clothing & footwear	6.79	143.18	148.72	159.02	170.72	170.79	170.80
		<i>4.99</i>	<i>3.87</i>	<i>6.93</i>	<i>0.02</i>	<i>0.04</i>	<i>0.01</i>
II. Gross rent, fuel & lighting	22.17	126.31	131.07	138.41	147.75	147.75	147.76
		<i>3.06</i>	<i>3.77</i>	<i>5.60</i>	<i>0.22</i>	<i>0.00</i>	<i>0.01</i>
III. Furniture, furnishing, household equipments & operation	2.58	146.30	155.49	168.05	192.41	195.11	195.20
		<i>5.55</i>	<i>6.28</i>	<i>8.08</i>	<i>3.95</i>	<i>1.40</i>	<i>0.05</i>
IV. Medical care & health expenses	2.97	152.49	156.47	161.64	172.27	172.31	172.37
		<i>3.68</i>	<i>2.61</i>	<i>3.30</i>	<i>0.02</i>	<i>0.02</i>	<i>0.03</i>
V. Transport & communication	7.07	182.41	192.53	201.38	211.00	211.28	211.38
		<i>6.04</i>	<i>5.55</i>	<i>4.60</i>	<i>1.43</i>	<i>0.13</i>	<i>0.05</i>
VI. Recreation, entertainment, education & cultural services	6.40	141.60	157.05	163.51	167.46	167.46	167.52
		<i>5.59</i>	<i>10.91</i>	<i>4.11</i>	<i>0.90</i>	<i>0.00</i>	<i>0.04</i>
VII. Misc. goods & services	3.22	144.80	152.62	159.93	172.38	172.90	174.61
		<i>5.69</i>	<i>5.40</i>	<i>4.79</i>	<i>0.64</i>	<i>0.30</i>	<i>0.99</i>

**Note :** Figures in italics indicate percentage change over previous year/month

