

Consumer Price Index (CPI) And Inflation Rate

Table 1 Consumer Price Index (CPI) And Inflation Rate
(Point To Point)

(1995-96 = 100)

CPI Classification	2003-04	2004-05	2005-06	2006-07	2007		
					Oct	Nov	Dec
NATIONAL							
General index	143.90	153.23	164.21	176.06	195.15	195.19	193.25
<i>Inflation</i>	5.83	6.48	7.17	7.22	10.06	11.21	11.59
Food index	146.50	158.08	170.34	184.18	209.91	209.95	206.54
<i>Inflation</i>	6.93	7.91	7.76	8.12	11.73	13.83	14.46
Nonfood	141.03	147.14	156.56	165.79	175.67	175.72	175.91
<i>Inflation</i>	4.37	4.33	6.40	5.90	7.42	7.26	7.27
ALL RURAL							
General index	144.46	154.03	165.37	177.42	197.17	197.20	194.97
<i>Inflation</i>	5.77	6.62	7.36	7.30	10.22	11.19	11.63
Food index	145.22	156.82	168.77	182.18	207.39	207.41	203.80
<i>Inflation</i>	6.55	7.99	7.62	7.96	11.54	13.13	13.91
Nonfood	143.18	149.29	159.59	169.33	179.79	179.84	179.97
<i>Inflation</i>	4.47	4.27	6.90	6.10	7.71	7.55	7.52
ALL URBAN							
General index	142.54	151.29	161.39	172.73	190.23	190.29	189.06
<i>Inflation</i>	5.99	6.14	6.68	7.03	9.64	11.29	11.47
Food index	149.60	161.14	174.18	189.06	216.05	216.13	213.21
<i>Inflation</i>	7.80	7.71	8.09	8.54	12.15	15.50	15.77
Nonfood	135.80	141.90	149.20	157.17	165.63	165.67	166.03
<i>Inflation</i>	4.14	4.49	5.14	5.34	6.67	6.46	6.62

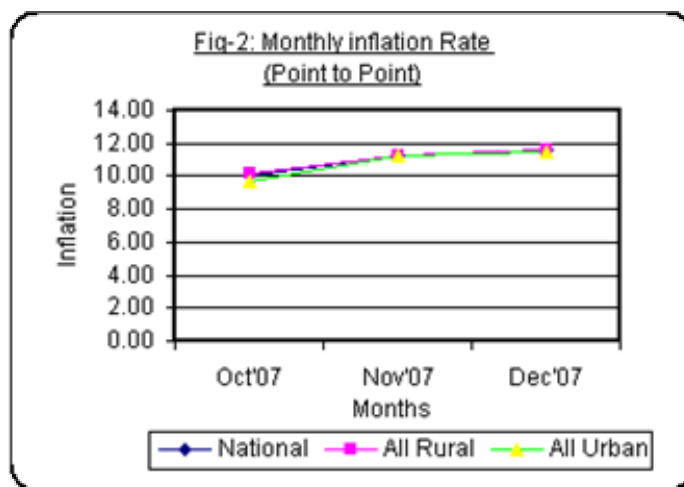
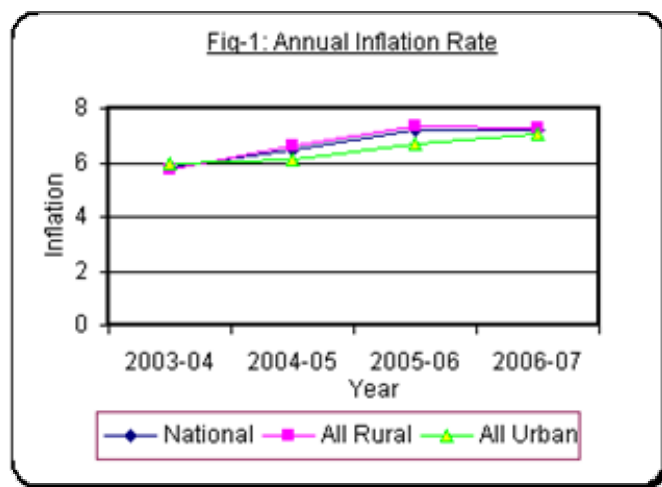


Table 2 Consumer Price Index (CPI) : National
(1995-96 = 100)

CPI Classification	2003-04	2004-05	2005-06	2006-07	2007		
					Oct	Nov	Dec
General	143.90	153.23	164.21	176.06	195.15	195.19	193.25
	<i>5.83</i>	<i>6.48</i>	<i>7.17</i>	<i>7.22</i>	<i>2.33</i>	<i>0.02</i>	<i>-0.99</i>
1. Food, beverage & tobacco	146.50	158.08	170.34	184.18	209.91	209.95	206.54
	<i>6.93</i>	<i>7.90</i>	<i>7.76</i>	<i>8.12</i>	<i>3.33</i>	<i>0.02</i>	<i>-1.62</i>
2. Non-food of which	141.03	147.14	156.56	165.79	175.67	175.72	175.91
	<i>4.37</i>	<i>4.33</i>	<i>6.40</i>	<i>5.90</i>	<i>0.64</i>	<i>0.03</i>	<i>0.11</i>
I. Clothing & footwear	136.25	142.15	148.35	156.79	164.30	164.39	164.51
	<i>4.37</i>	<i>4.38</i>	<i>4.36</i>	<i>5.69</i>	<i>0.63</i>	<i>0.05</i>	<i>0.07</i>
II. Gross rent, fuel & lighting	136.19	141.43	152.02	162.32	174.36	174.42	174.52
	<i>3.80</i>	<i>2.52</i>	<i>7.49</i>	<i>6.78</i>	<i>0.60</i>	<i>0.03</i>	<i>0.06</i>
III. Furniture, furnishing, household equipments & operation	137.95	143.18	151.21	162.61	176.42	176.46	177.36
	<i>4.25</i>	<i>3.79</i>	<i>5.61</i>	<i>7.54</i>	<i>1.16</i>	<i>0.02</i>	<i>0.51</i>
IV. Medical care & health expenses	154.36	162.47	169.62	178.49	185.06	185.08	186.02
	<i>6.27</i>	<i>5.25</i>	<i>4.40</i>	<i>5.23</i>	<i>0.27</i>	<i>0.01</i>	<i>0.51</i>
V. Transport & communication	170.79	179.94	191.66	201.15	210.13	210.15	210.20
	<i>7.06</i>	<i>5.36</i>	<i>6.51</i>	<i>4.95</i>	<i>0.15</i>	<i>0.01</i>	<i>0.02</i>
VI. Recreation, entertainment, education & cultural services	141.31	150.24	165.42	171.47	174.06	174.10	174.16
	<i>3.19</i>	<i>6.32</i>	<i>10.10</i>	<i>3.66</i>	<i>0.35</i>	<i>0.02</i>	<i>0.03</i>
VII. Misc. goods & services	133.82	137.78	143.25	151.44	165.71	165.76	165.90
	<i>3.42</i>	<i>2.96</i>	<i>3.97</i>	<i>5.72</i>	<i>1.94</i>	<i>0.03</i>	<i>0.08</i>

Note : Figures in italics indicate percentage change over previous year/month

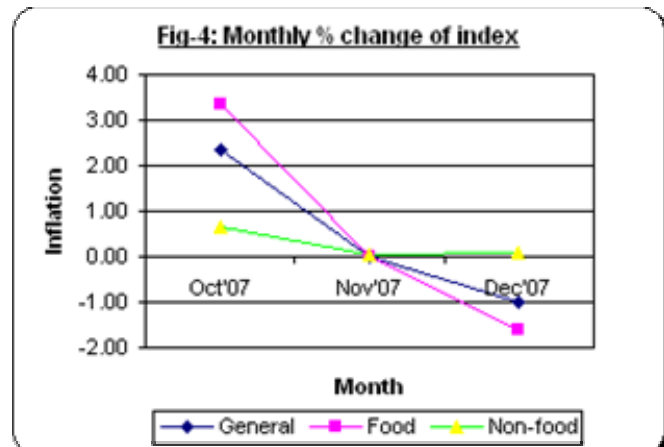
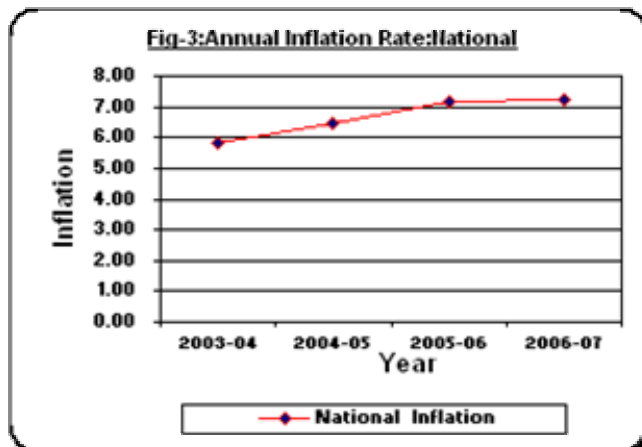


Table 3 Consumer Price Index (CPI) : All Rura
(1995-96 = 100)

CPI Classification	Weight	2004-05	2005-06	2006-07	2007		
					Oct	Nov	Dec
General	100.00	154.03 <i>6.62</i>	165.37 <i>7.36</i>	177.42 <i>7.29</i>	197.17 <i>2.54</i>	197.20 <i>0.02</i>	194.97 <i>-1.13</i>
1. Food , beverage & tobacco	62.96	156.82 <i>7.99</i>	168.77 <i>7.62</i>	182.18 <i>7.95</i>	207.39 <i>3.50</i>	207.41 <i>0.01</i>	203.80 <i>-1.74</i>
2. Non-food of which	37.04	149.29 <i>4.27</i>	159.59 <i>6.90</i>	169.33 <i>6.10</i>	179.79 <i>0.71</i>	179.84 <i>0.03</i>	179.97 <i>0.07</i>
I. Clothing & footwear	6.88	141.73 <i>4.05</i>	148.19 <i>4.56</i>	155.88 <i>5.19</i>	161.76 <i>0.42</i>	161.87 <i>0.07</i>	161.98 <i>0.07</i>
II. Gross rent, fuel & lighting	14.69	147.64 <i>4.13</i>	160.63 <i>8.80</i>	172.14 <i>7.17</i>	185.44 <i>0.71</i>	185.50 <i>0.03</i>	185.65 <i>0.08</i>
III. Furniture, furnishing, household equipments & operation	2.70	141.90 <i>3.07</i>	149.45 <i>5.32</i>	160.38 <i>7.31</i>	173.97 <i>1.30</i>	174.00 <i>0.02</i>	174.19 <i>0.11</i>
IV. Medical care & health expenses	2.79	166.56 <i>5.85</i>	175.03 <i>5.09</i>	185.41 <i>5.93</i>	191.66 <i>0.24</i>	191.67 <i>0.01</i>	191.68 <i>0.01</i>
V. Transport & communication	2.98	178.92 <i>5.07</i>	191.31 <i>6.92</i>	201.06 <i>5.10</i>	211.02 <i>0.15</i>	211.04 <i>0.01</i>	211.10 <i>0.03</i>
VI. Recreation, entertainment, education & cultural services	3.20	153.78 <i>6.58</i>	168.85 <i>9.80</i>	174.74 <i>3.49</i>	177.48 <i>0.43</i>	177.50 <i>0.01</i>	177.53 <i>0.02</i>
VII. Misc. goods & services	3.80	134.90 <i>1.80</i>	139.40 <i>3.34</i>	147.95 <i>6.13</i>	163.45 <i>2.01</i>	163.49 <i>0.02</i>	163.69 <i>0.12</i>

Note : Figures in italics indicate percentage change over previous year/month

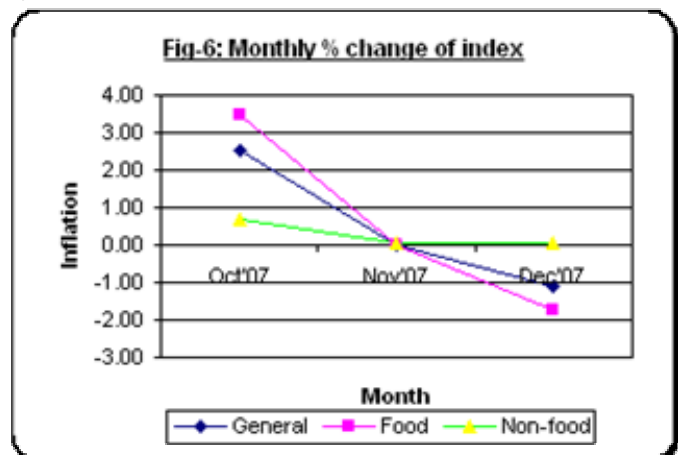
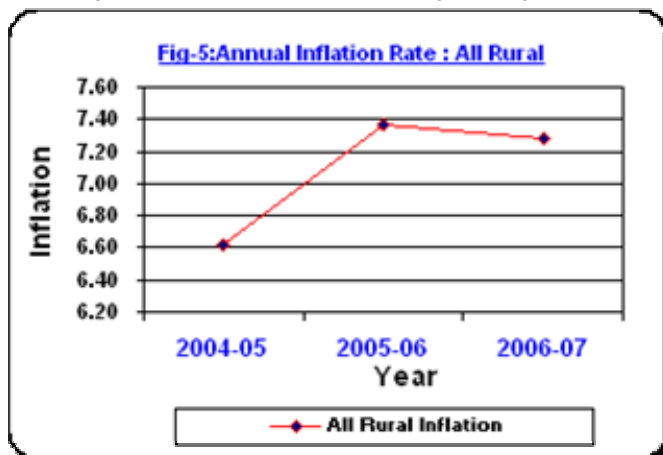


Table 4 Consumer Price Index (CPI) : All Urban

(1995-96 = 100)

CPI Classification	Weight	2004-05	2005-06	2006-07	2007		
					Oct	Nov	Dec
General	100.00	151.29 <i>6.14</i>	161.39 <i>6.68</i>	172.73 <i>7.03</i>	190.23 <i>1.83</i>	190.29 <i>0.03</i>	189.06 <i>-0.65</i>
1. Food , beverage & tobacco	48.80	161.14 <i>7.71</i>	174.18 <i>8.09</i>	189.06 <i>8.54</i>	216.05 <i>2.94</i>	216.13 <i>0.04</i>	213.21 <i>-1.35</i>
2. Non-food of which	51.20	141.90 <i>4.49</i>	149.20 <i>5.14</i>	157.17 <i>5.34</i>	165.63 <i>0.47</i>	165.67 <i>0.02</i>	166.03 <i>0.22</i>
I. Clothing & footwear	6.79	143.18 <i>4.99</i>	148.72 <i>3.87</i>	159.02 <i>6.93</i>	170.50 <i>1.11</i>	170.54 <i>0.02</i>	170.68 <i>0.08</i>
II. Gross rent, fuel & lighting	22.17	126.31 <i>3.06</i>	131.07 <i>3.77</i>	138.41 <i>5.60</i>	147.39 <i>0.26</i>	147.43 <i>0.03</i>	147.43 <i>0.00</i>
III. Furniture, furnishing, household equipments & operation	2.58	146.30 <i>5.55</i>	155.49 <i>6.28</i>	168.05 <i>8.08</i>	182.38 <i>0.82</i>	182.44 <i>0.03</i>	185.09 <i>1.45</i>
IV. Medical care & health expenses	2.97	152.49 <i>3.68</i>	156.47 <i>2.61</i>	161.64 <i>3.30</i>	168.99 <i>0.34</i>	169.03 <i>0.02</i>	172.23 <i>1.89</i>
V. Transport & communication	7.07	182.41 <i>6.04</i>	192.53 <i>5.55</i>	201.38 <i>4.60</i>	207.96 <i>0.14</i>	207.98 <i>0.01</i>	208.02 <i>0.02</i>
VI. Recreation, entertainment, education & cultural services	6.40	141.60 <i>5.59</i>	157.05 <i>10.91</i>	163.51 <i>4.11</i>	165.73 <i>0.13</i>	165.82 <i>0.05</i>	165.96 <i>0.08</i>
VII. Misc. goods & services	3.22	144.80 <i>5.69</i>	152.62 <i>5.40</i>	159.93 <i>4.79</i>	171.23 <i>1.80</i>	171.28 <i>0.03</i>	171.29 <i>0.01</i>

Note : Figures in italics indicate percentage change over previous year/month

