

**Table 1 Consumer Price Index (CPI) And Inflation Rate
(Point To Point)**

(1995-96 = 100)

CPI Classification	2003-04	2004-05	2005-06	2006-07	2007		2008
					Nov	Dec	Jan
NATIONAL							
General index	143.90	153.23	164.21	176.06	195.19	193.25	192.39
<i>Inflation</i>	5.83	6.48	7.17	7.22	11.21	11.59	11.43
Food index	146.50	158.08	170.34	184.18	209.95	206.54	204.59
<i>Inflation</i>	6.93	7.91	7.76	8.12	13.83	14.46	14.20
Nonfood	141.03	147.14	156.56	165.79	175.72	175.91	176.59
<i>Inflation</i>	4.37	4.33	6.40	5.90	7.26	7.27	7.21
ALL RURAL							
General index	144.46	154.03	165.37	177.42	197.20	194.97	193.83
<i>Inflation</i>	5.77	6.62	7.36	7.30	11.19	11.63	11.49
Food index	145.22	156.82	168.77	182.18	207.41	203.80	201.71
<i>Inflation</i>	6.55	7.99	7.62	7.96	13.13	13.91	13.86
Nonfood	143.18	149.29	159.59	169.33	179.84	179.97	180.44
<i>Inflation</i>	4.47	4.27	6.90	6.10	7.55	7.52	7.25
ALL URBAN							
General index	142.54	151.29	161.39	172.73	190.29	189.06	188.88
<i>Inflation</i>	5.99	6.14	6.68	7.03	11.29	11.47	11.28
Food index	149.60	161.14	174.18	189.06	216.13	213.21	211.62
<i>Inflation</i>	7.80	7.71	8.09	8.54	15.50	15.77	15.00
Nonfood	135.80	141.90	149.20	157.17	165.67	166.03	167.22
<i>Inflation</i>	4.14	4.49	5.14	5.34	6.46	6.62	7.10

Fig-1: Annual Inflation Rate

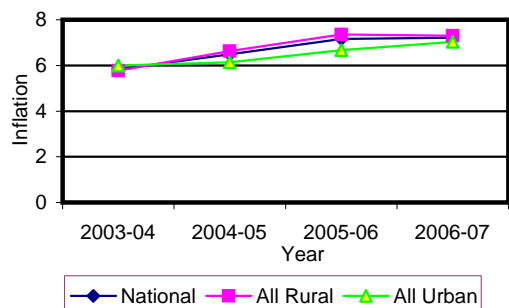


Fig-2: Monthly inflation Rate (Point to Point)

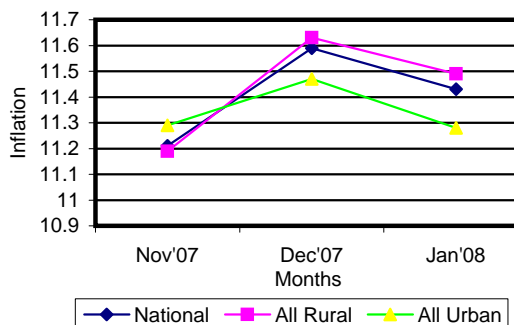


Table 2 Consumer Price Index (CPI) : National

(1995-96 = 100)

CPI Classification	2003-04	2004-05	2005-06	2006-07	2007		2008
					Nov	Dec	Jan
General	143.90	153.23	164.21	176.06	195.19	193.25	192.39
	<i>5.83</i>	<i>6.48</i>	<i>7.17</i>	<i>7.22</i>	<i>0.02</i>	<i>-0.99</i>	<i>-0.45</i>
1. Food , beverage & tobacco	146.50	158.08	170.34	184.18	209.95	206.54	204.59
	<i>6.93</i>	<i>7.90</i>	<i>7.76</i>	<i>8.12</i>	<i>0.02</i>	<i>-1.62</i>	<i>-0.94</i>
2. Non-food of which	141.03	147.14	156.56	165.79	175.72	175.91	176.59
	<i>4.37</i>	<i>4.33</i>	<i>6.40</i>	<i>5.90</i>	<i>0.03</i>	<i>0.11</i>	<i>0.39</i>
I. Clothing & footwear	136.25	142.15	148.35	156.79	164.39	164.51	164.59
	<i>4.37</i>	<i>4.38</i>	<i>4.36</i>	<i>5.69</i>	<i>0.05</i>	<i>0.07</i>	<i>0.05</i>
II. Gross rent, fuel & lighting	136.19	141.43	152.02	162.32	174.42	174.52	174.91
	<i>3.80</i>	<i>2.52</i>	<i>7.49</i>	<i>6.78</i>	<i>0.03</i>	<i>0.06</i>	<i>0.22</i>
III. Furniture, furnishing, household equipments & operation	137.95	143.18	151.21	162.61	176.46	177.36	179.85
	<i>4.25</i>	<i>3.79</i>	<i>5.61</i>	<i>7.54</i>	<i>0.02</i>	<i>0.51</i>	<i>1.40</i>
IV. Medical care & health expenses	154.36	162.47	169.62	178.49	185.08	186.02	186.07
	<i>6.27</i>	<i>5.25</i>	<i>4.40</i>	<i>5.23</i>	<i>0.01</i>	<i>0.51</i>	<i>0.03</i>
V. Transport & communication	170.79	179.94	191.66	201.15	210.15	210.20	211.48
	<i>7.06</i>	<i>5.36</i>	<i>6.51</i>	<i>4.95</i>	<i>0.01</i>	<i>0.02</i>	<i>0.61</i>
VI. Recreation, entertainment, education & cultural services	141.31	150.24	165.42	171.47	174.10	174.16	175.16
	<i>3.19</i>	<i>6.32</i>	<i>10.10</i>	<i>3.66</i>	<i>0.02</i>	<i>0.03</i>	<i>0.57</i>
VII. Misc. goods & services	133.82	137.78	143.25	151.44	165.76	165.90	167.22
	<i>3.42</i>	<i>2.96</i>	<i>3.97</i>	<i>5.72</i>	<i>0.03</i>	<i>0.08</i>	<i>0.80</i>

Note : Figures in italics indicate percentage change over previous year/month

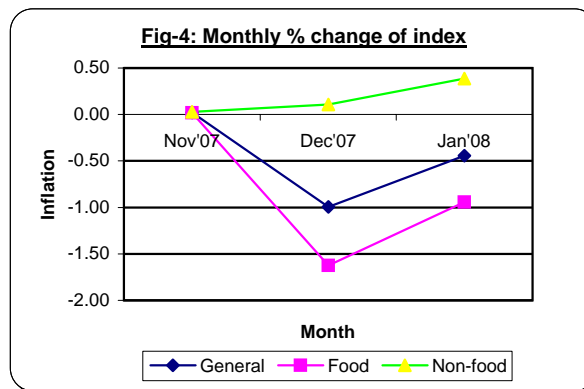
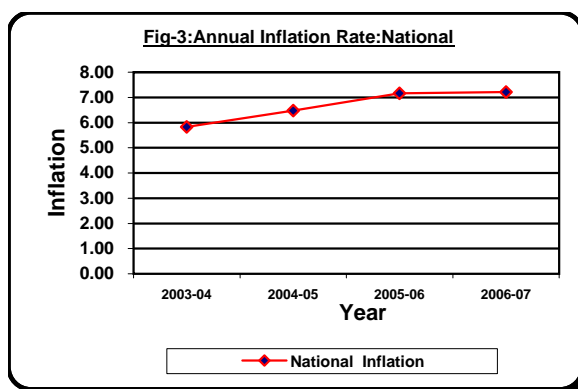


Table 3 Consumer Price Index (CPI) : All Rural

(1995-96 = 100)

CPI Classification	Weight	2004-05	2005-06	2006-07	2007		2008
					Nov	Dec	Jan
General	100.00	154.03	165.37	177.42	197.20	194.97	193.83
		<i>6.62</i>	<i>7.36</i>	<i>7.29</i>	<i>0.02</i>	<i>-1.13</i>	<i>-0.58</i>
1. Food , beverage & tobacco	62.96	156.82	168.77	182.18	207.41	203.80	201.71
		<i>7.99</i>	<i>7.62</i>	<i>7.95</i>	<i>0.01</i>	<i>-1.74</i>	<i>-1.03</i>
2. Non-food of which	37.04	149.29	159.59	169.33	179.84	179.97	180.44
		<i>4.27</i>	<i>6.90</i>	<i>6.10</i>	<i>0.03</i>	<i>0.07</i>	<i>0.26</i>
I. Clothing & footwear	6.88	141.73	148.19	155.88	161.87	161.98	162.07
		<i>4.05</i>	<i>4.56</i>	<i>5.19</i>	<i>0.07</i>	<i>0.07</i>	<i>0.06</i>
II. Gross rent, fuel & lighting	14.69	147.64	160.63	172.14	185.50	185.65	186.06
		<i>4.13</i>	<i>8.80</i>	<i>7.17</i>	<i>0.03</i>	<i>0.08</i>	<i>0.22</i>
III. Furniture, furnishing, household equipments & operation	2.70	141.90	149.45	160.38	174.00	174.19	174.69
		<i>3.07</i>	<i>5.32</i>	<i>7.31</i>	<i>0.02</i>	<i>0.11</i>	<i>0.29</i>
IV. Medical care & health expenses	2.79	166.56	175.03	185.41	191.67	191.68	191.74
		<i>5.85</i>	<i>5.09</i>	<i>5.93</i>	<i>0.01</i>	<i>0.01</i>	<i>0.03</i>
V. Transport & communication	2.98	178.92	191.31	201.06	211.04	211.10	211.68
		<i>5.07</i>	<i>6.92</i>	<i>5.10</i>	<i>0.01</i>	<i>0.03</i>	<i>0.27</i>
VI. Recreation, entertainment, education & cultural services	3.20	153.78	168.85	174.74	177.50	177.53	178.33
		<i>6.58</i>	<i>9.80</i>	<i>3.49</i>	<i>0.01</i>	<i>0.02</i>	<i>0.45</i>
VII. Misc. goods & services	3.80	134.90	139.40	147.95	163.49	163.69	165.10
		<i>1.80</i>	<i>3.34</i>	<i>6.13</i>	<i>0.02</i>	<i>0.12</i>	<i>0.86</i>

Note : Figures in italics indicate percentage change over previous year/month

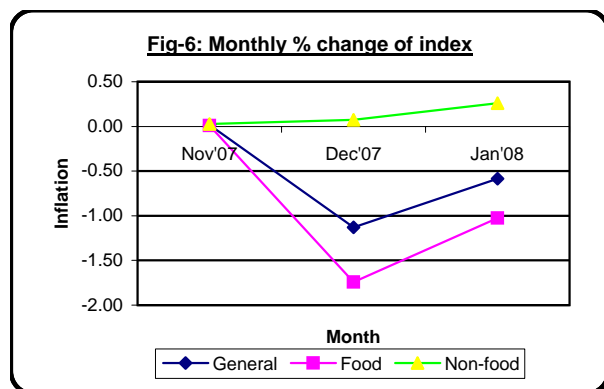
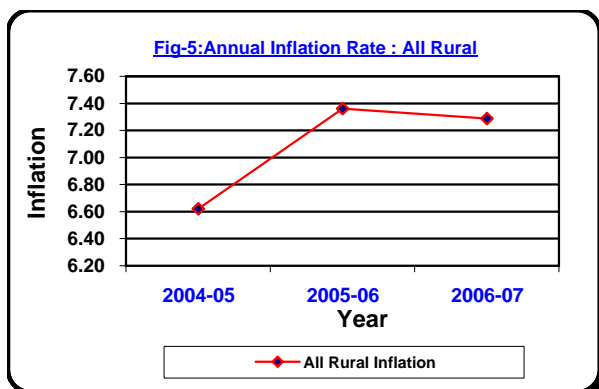


Table 4 Consumer Price Index (CPI) : All Urban

(1995-96 = 100)

CPI Classification	Weight	2004-05	2005-06	2006-07	2007		2008
					Nov	Dec	Jan
General	100.00	151.29	161.39	172.73	190.29	189.06	188.88
		<i>6.14</i>	<i>6.68</i>	<i>7.03</i>	<i>0.03</i>	<i>-0.65</i>	<i>-0.10</i>
1. Food , beverage & tobacco	48.80	161.14	174.18	189.06	216.13	213.21	211.62
		<i>7.71</i>	<i>8.09</i>	<i>8.54</i>	<i>0.04</i>	<i>-1.35</i>	<i>-0.75</i>
2. Non-food of which	51.20	141.90	149.20	157.17	165.67	166.03	167.22
		<i>4.49</i>	<i>5.14</i>	<i>5.34</i>	<i>0.02</i>	<i>0.22</i>	<i>0.72</i>
I. Clothing & footwear	6.79	143.18	148.72	159.02	170.54	170.68	170.72
		<i>4.99</i>	<i>3.87</i>	<i>6.93</i>	<i>0.02</i>	<i>0.08</i>	<i>0.02</i>
II. Gross rent, fuel & lighting	22.17	126.31	131.07	138.41	147.43	147.43	147.75
		<i>3.06</i>	<i>3.77</i>	<i>5.60</i>	<i>0.03</i>	<i>0.00</i>	<i>0.22</i>
III. Furniture, furnishing, household equipments & operation	2.58	146.30	155.49	168.05	182.44	185.09	192.41
		<i>5.55</i>	<i>6.28</i>	<i>8.08</i>	<i>0.03</i>	<i>1.45</i>	<i>3.95</i>
IV. Medical care & health expenses	2.97	152.49	156.47	161.64	169.03	172.23	172.27
		<i>3.68</i>	<i>2.61</i>	<i>3.30</i>	<i>0.02</i>	<i>1.89</i>	<i>0.02</i>
V. Transport & communication	7.07	182.41	192.53	201.38	207.98	208.02	211.00
		<i>6.04</i>	<i>5.55</i>	<i>4.60</i>	<i>0.01</i>	<i>0.02</i>	<i>1.43</i>
VI. Recreation, entertainment, education & cultural services	6.40	141.60	157.05	163.51	165.82	165.96	167.46
		<i>5.59</i>	<i>10.91</i>	<i>4.11</i>	<i>0.05</i>	<i>0.08</i>	<i>0.90</i>
VII. Misc. goods & services	3.22	144.80	152.62	159.93	171.28	171.29	172.38
		<i>5.69</i>	<i>5.40</i>	<i>4.79</i>	<i>0.03</i>	<i>0.01</i>	<i>0.64</i>

Note : Figures in italics indicate percentage change over previous year/month

