

**Table 1 Consumer Price Index (CPI) And Inflation Rate
(Point To Point)**

(1995-96 = 100)

CPI Classification	2003-04	2004-05	2005-06	2006-07	2007		
					May	June	July
NATIONAL							
General index	143.90	153.23	164.21	176.06	181.73	184.89	186.66
<i>Inflation</i>	5.83	6.48	7.17	7.22	8.05	9.20	10.10
Food index	146.50	158.08	170.34	184.18	190.15	194.19	196.57
<i>Inflation</i>	6.93	7.91	7.76	8.12	8.35	9.82	11.42
Nonfood	141.03	147.14	156.56	165.79	171.36	173.19	174.12
<i>Inflation</i>	4.37	4.33	6.40	5.90	7.77	8.34	8.23
ALL RURAL							
General index	144.46	154.03	165.37	177.42	182.88	186.11	187.98
<i>Inflation</i>	5.77	6.62	7.36	7.30	8.04	9.14	10.10
Food index	145.22	156.82	168.77	182.18	187.32	191.43	193.81
<i>Inflation</i>	6.55	7.99	7.62	7.96	7.98	9.45	10.97
Nonfood	143.18	149.29	159.59	169.33	175.34	177.05	178.06
<i>Inflation</i>	4.47	4.27	6.90	6.10	8.15	8.55	8.54
ALL URBAN							
General index	142.54	151.29	161.39	172.73	178.93	181.92	183.44
<i>Inflation</i>	5.99	6.14	6.68	7.03	8.08	9.35	10.09
Food index	149.60	161.14	174.18	189.06	197.05	200.92	203.28
<i>Inflation</i>	7.80	7.71	8.09	8.54	9.21	10.71	12.46
Nonfood	135.80	141.90	149.20	157.17	161.66	163.80	164.53
<i>Inflation</i>	4.14	4.49	5.14	5.34	6.78	7.80	7.42

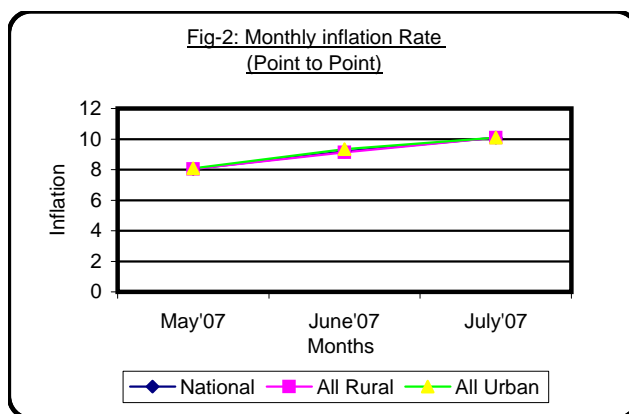
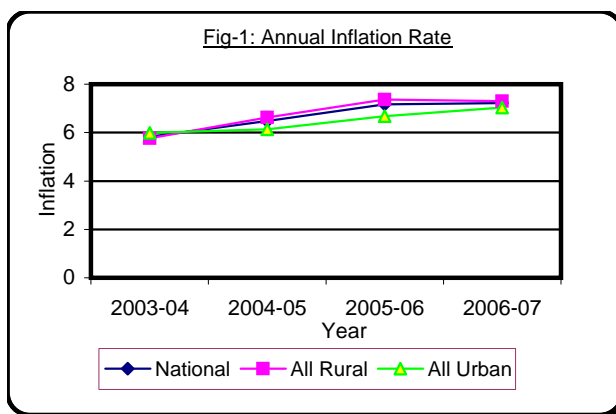


Table 2 Consumer Price Index (CPI) : National

(1995-96 = 100)

CPI Classification	2003-04	2004-05	2005-06	2006-07	2007		
					May	June	July
General	143.90	153.23	164.21	176.06	181.73	184.89	186.66
1. Food , beverage & tobacco	146.50	158.08	170.34	184.18	190.15	194.19	196.57
2. Non-food of which	141.03	147.14	156.56	165.79	171.36	173.19	174.12
I. Clothing & footwear	136.25	142.15	148.35	156.79	161.16	161.34	162.45
II. Gross rent, fuel & lighting	136.19	141.43	152.02	162.32	168.87	172.07	173.14
III. Furniture, furnishing, household equipments & operation	137.95	143.18	151.21	162.61	172.38	173.14	174.15
IV. Medical care & health expenses	154.36	162.47	169.62	178.49	181.96	183.94	184.46
V. Transport & communication	170.79	179.94	191.66	201.15	207.48	208.44	209.49
VI. Recreation, entertainment, education & cultural services	141.31	150.24	165.42	171.47	173.26	172.95	172.90
VII. Misc. goods & services	133.82	137.78	143.25	151.44	157.38	159.88	161.54

Note : Figures in italics indicate percentage change over previous year/month

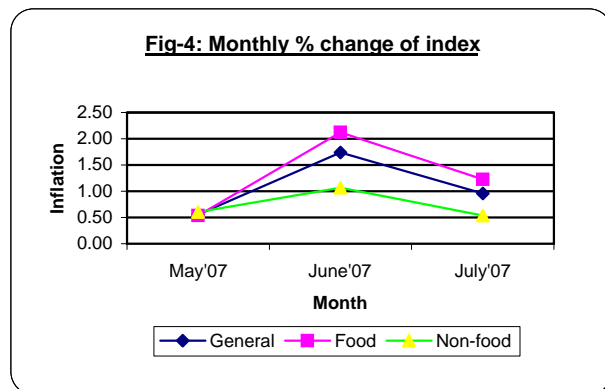
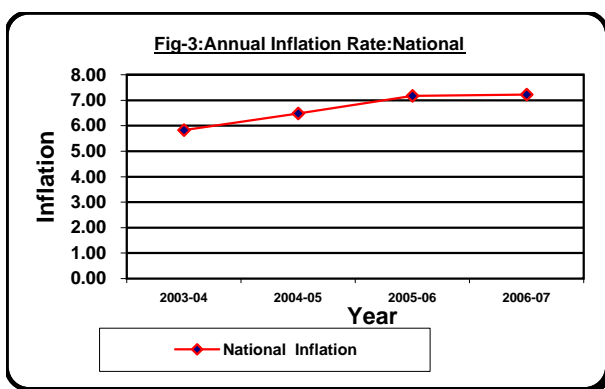


Table 3 Consumer Price Index (CPI) : All Rural

(1995-96 = 100)

CPI Classification	Weight	2004-05	2005-06	2006-07	2007		
					May	June	July
General	100.00	154.03	165.37	177.42	182.88	186.11	187.98
1. Food , beverage & tobacco	62.96	156.82	168.77	182.18	187.32	191.43	193.81
2. Non-food of which	37.04	149.29	159.59	169.33	175.34	177.05	178.06
I. Clothing & footwear	6.88	141.73	148.19	155.88	159.10	159.31	160.38
II. Gross rent, fuel & lighting	14.69	147.64	160.63	172.14	179.99	182.61	183.89
III. Furniture, furnishing, household equipments & operation	2.70	141.90	149.45	160.38	170.23	171.24	171.43
IV. Medical care & health expenses	2.79	166.56	175.03	185.41	188.55	190.98	191.11
V. Transport & communication	2.98	178.92	191.31	201.06	207.71	209.01	210.41
VI. Recreation, entertainment, education & cultural services	3.20	153.78	168.85	174.74	176.25	175.96	176.04
VII. Misc. goods & services	3.80	134.90	139.40	147.95	154.52	157.48	159.05

Note : Figures in italics indicate percentage change over previous year/month

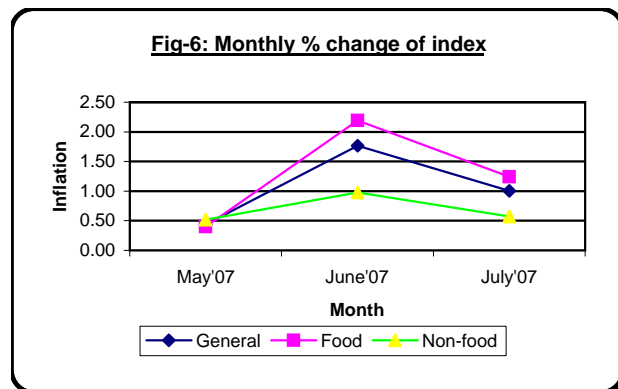
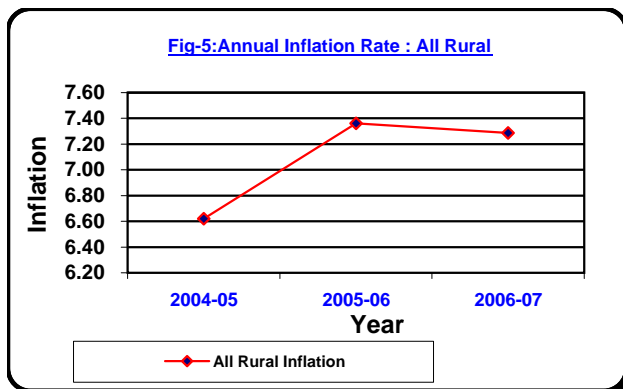


Table 4 Consumer Price Index (CPI) : All Urban

(1995-96 = 100)

CPI Classification	Weight	2004-05	2005-06	2006-07	2007		
					May	June	July
General	100.00	151.29	161.39	172.73	178.93	181.92	183.44
1. Food , beverage & tobacco	48.80	161.14	174.18	189.06	197.05	200.92	203.28
2. Non-food of which	51.20	141.90	149.20	157.17	161.66	163.80	164.53
I. Clothing & footwear	6.79	143.18	148.72	159.02	166.16	166.27	167.48
II. Gross rent, fuel & lighting	22.17	126.31	131.07	138.41	141.78	146.41	146.95
III. Furniture, furnishing, household equipments & operation	2.58	146.30	155.49	168.05	177.63	177.76	180.76
IV. Medical care & health expenses	2.97	152.49	156.47	161.64	165.91	166.81	168.28
V. Transport & communication	7.07	182.41	192.53	201.38	206.92	207.06	207.26
VI. Recreation, entertainment, education & cultural services	6.40	141.60	157.05	163.51	165.99	165.62	165.27
VII. Misc. goods & services	3.22	144.80	152.62	159.93	164.34	165.73	167.60

Note : Figures in italics indicate percentage change over previous year/month

