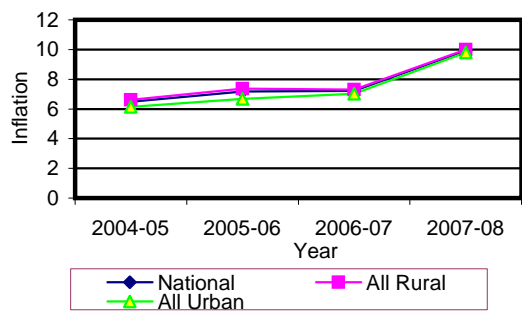


**Table 1 Consumer Price Index (CPI) And Inflation Rate  
(Point To Point)**

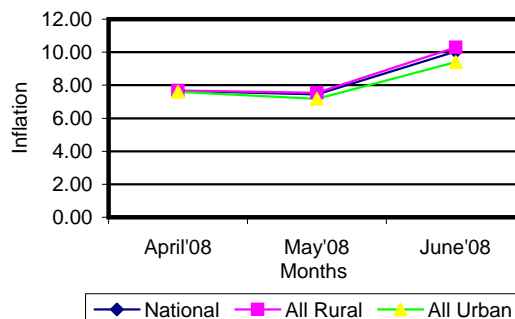
( 1995-96 = 100)

| CPI Classification | 2004-05 | 2005-06 | 2006-07 | 2007-08 | 2008   |        |        |
|--------------------|---------|---------|---------|---------|--------|--------|--------|
|                    |         |         |         |         | April  | May    | June   |
| <b>NATIONAL</b>    |         |         |         |         |        |        |        |
| General index      | 153.23  | 164.21  | 176.06  | 193.54  | 194.57 | 195.25 | 203.45 |
| <i>Inflation</i>   | 6.48    | 7.17    | 7.22    | 9.93    | 7.66   | 7.44   | 10.04  |
| Food index         | 158.08  | 170.34  | 184.18  | 206.79  | 207.71 | 208.45 | 221.57 |
| <i>Inflation</i>   | 7.91    | 7.76    | 8.12    | 12.28   | 9.82   | 9.62   | 14.10  |
| Nonfood            | 147.14  | 156.56  | 165.79  | 176.26  | 177.42 | 178.02 | 179.32 |
| <i>Inflation</i>   | 4.33    | 6.40    | 5.90    | 6.32    | 4.16   | 3.89   | 3.54   |
| <b>ALL RURAL</b>   |         |         |         |         |        |        |        |
| General index      | 154.03  | 165.37  | 177.42  | 195.14  | 196.07 | 196.67 | 205.27 |
| <i>Inflation</i>   | 6.62    | 7.36    | 7.30    | 9.99    | 7.68   | 7.54   | 10.29  |
| Food index         | 156.82  | 168.77  | 182.18  | 203.93  | 204.78 | 205.43 | 218.23 |
| <i>Inflation</i>   | 7.99    | 7.62    | 7.96    | 11.94   | 9.76   | 9.67   | 14.00  |
| Nonfood            | 149.29  | 159.59  | 169.33  | 180.19  | 181.26 | 181.78 | 183.25 |
| <i>Inflation</i>   | 4.27    | 6.90    | 6.10    | 6.41    | 3.91   | 3.67   | 3.50   |
| <b>ALL URBAN</b>   |         |         |         |         |        |        |        |
| General index      | 151.29  | 161.39  | 172.73  | 189.65  | 190.90 | 191.78 | 199.02 |
| <i>Inflation</i>   | 6.14    | 6.68    | 7.03    | 9.80    | 7.59   | 7.18   | 9.40   |
| Food index         | 161.14  | 174.18  | 189.06  | 213.73  | 214.85 | 215.81 | 229.72 |
| <i>Inflation</i>   | 7.71    | 8.09    | 8.54    | 13.05   | 9.95   | 9.52   | 14.33  |
| Nonfood            | 141.90  | 149.20  | 157.17  | 166.69  | 168.06 | 168.88 | 169.76 |
| <i>Inflation</i>   | 4.49    | 5.14    | 5.34    | 6.06    | 4.83   | 4.47   | 3.64   |

**Fig-1: Annual Inflation Rate**



**Fig-2: Monthly inflation Rate (Point to Point)**

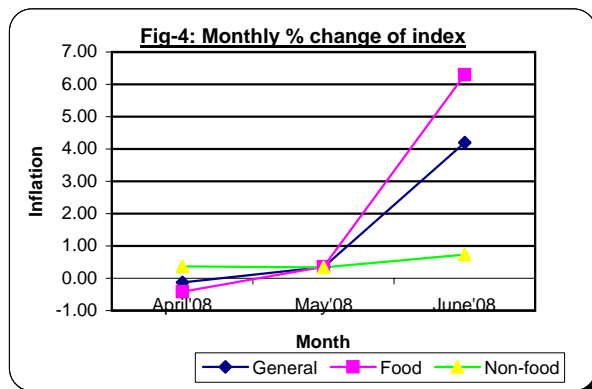
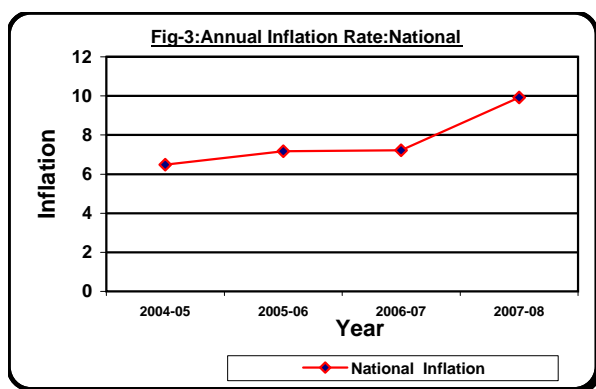


## Table 2 Consumer Price Index (CPI) : National

( 1995-96 = 100)

| CPI Classification   | 2004-05     | 2005-06      | 2006-07     | 2007-08      | 2008         |             |             |
|--|-------------|--------------|-------------|--------------|--------------|-------------|-------------|
|  |             |              |             |              | April        | May         | June        |
| <b>General</b>   | 153.23      | 164.21       | 176.06      | 193.54       | 194.57       | 195.25      | 203.45      |
|  | <i>6.48</i> | <i>7.17</i>  | <i>7.22</i> | <i>9.93</i>  | <i>-0.13</i> | <i>0.35</i> | <i>4.20</i> |
| 1. <b>Food, beverage &amp; tobacco</b>                       | 158.08      | 170.34       | 184.18      | 206.79       | 207.71       | 208.45      | 221.57      |
|  | <i>7.90</i> | <i>7.76</i>  | <i>8.12</i> | <i>12.28</i> | <i>-0.42</i> | <i>0.36</i> | <i>6.29</i> |
| 2. <b>Non-food of which</b>                                  | 147.14      | 156.56       | 165.79      | 176.26       | 177.42       | 178.02      | 179.32      |
|  | <i>4.33</i> | <i>6.40</i>  | <i>5.90</i> | <i>6.32</i>  | <i>0.36</i>  | <i>0.34</i> | <i>0.73</i> |
| I. Clothing & footwear                                       | 142.15      | 148.35       | 156.79      | 164.53       | 165.25       | 166.23      | 167.58      |
|  | <i>4.38</i> | <i>4.36</i>  | <i>5.69</i> | <i>4.94</i>  | <i>0.35</i>  | <i>0.59</i> | <i>0.81</i> |
| II. Gross rent, fuel & lighting                              | 141.43      | 152.02       | 162.32      | 174.7        | 175.76       | 176.09      | 176.67      |
|  | <i>2.52</i> | <i>7.49</i>  | <i>6.78</i> | <i>7.63</i>  | <i>0.45</i>  | <i>0.19</i> | <i>0.33</i> |
| III. Furniture, furnishing, household equipments & operation | 143.18      | 151.21       | 162.61      | 178.56       | 181.34       | 182.99      | 184.27      |
|  | <i>3.79</i> | <i>5.61</i>  | <i>7.54</i> | <i>9.81</i>  | <i>0.37</i>  | <i>0.91</i> | <i>0.70</i> |
| IV. Medical care & health expenses                           | 162.47      | 169.62       | 178.49      | 185.66       | 186.25       | 186.34      | 187.25      |
|  | <i>5.25</i> | <i>4.40</i>  | <i>5.23</i> | <i>4.02</i>  | <i>0.08</i>  | <i>0.05</i> | <i>0.49</i> |
| V. Transport & communication                                 | 179.94      | 191.66       | 201.15      | 211.01       | 211.88       | 212.35      | 213.37      |
|  | <i>5.36</i> | <i>6.51</i>  | <i>4.95</i> | <i>4.90</i>  | <i>0.05</i>  | <i>0.22</i> | <i>0.48</i> |
| VI. Recreation, entertainment, education & cultural services | 150.24      | 165.42       | 171.47      | 174.86       | 176.21       | 176.65      | 178.08      |
|  | <i>6.32</i> | <i>10.10</i> | <i>3.66</i> | <i>1.98</i>  | <i>0.55</i>  | <i>0.25</i> | <i>0.81</i> |
| VII. Misc. goods & services                                  | 137.78      | 143.25       | 151.44      | 166.69       | 168.76       | 170.08      | 174.99      |
|  | <i>2.96</i> | <i>3.97</i>  | <i>5.72</i> | <i>10.07</i> | <i>0.45</i>  | <i>0.78</i> | <i>2.89</i> |

**Note :** Figures in italics indicate percentage change over previous year/month

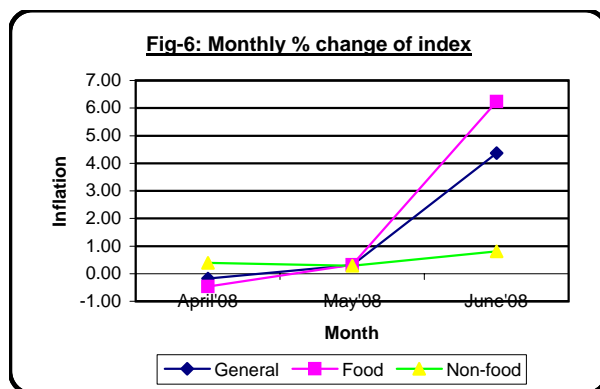
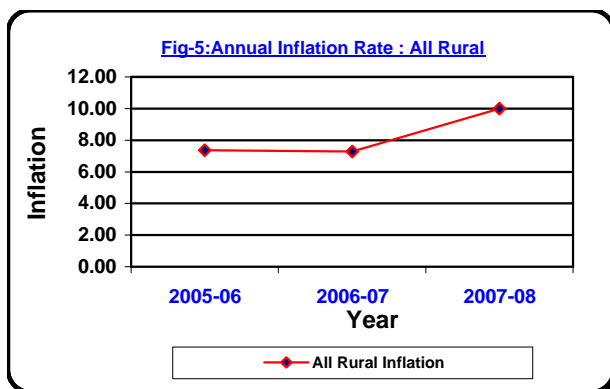


**Table 3 Consumer Price Index (CPI) : All Rural**

( 1995-96 = 100)

| CPI Classification   | Weight | 2005-06 | 2006-07 | 2007-08 | 2008   |        |        |
|--|--------|---------|---------|---------|--------|--------|--------|
|  |        |         |         |         | April  | May    | June   |
| <b>General</b>   | 100.00 | 165.37  | 177.42  | 195.14  | 196.07 | 196.67 | 205.27 |
|  |        | 7.36    | 7.29    | 9.99    | -0.18  | 0.31   | 4.37   |
| 1. <b>Food</b> , beverage & tobacco                          | 62.96  | 168.77  | 182.18  | 203.93  | 204.78 | 205.43 | 218.23 |
|  |        | 7.62    | 7.95    | 11.94   | -0.47  | 0.32   | 6.23   |
| 2. <b>Non-food</b> of which                                  | 37.04  | 159.59  | 169.33  | 180.19  | 181.26 | 181.78 | 183.25 |
|  |        | 6.90    | 6.10    | 6.41    | 0.39   | 0.29   | 0.81   |
| I. Clothing & footwear                                       | 6.88   | 148.19  | 155.88  | 162.08  | 162.91 | 163.46 | 164.88 |
|  |        | 4.56    | 5.19    | 3.98    | 0.46   | 0.34   | 0.87   |
| II. Gross rent, fuel & lighting                              | 14.69  | 160.63  | 172.14  | 185.85  | 187.20 | 187.61 | 188.40 |
|  |        | 8.80    | 7.17    | 7.96    | 0.56   | 0.22   | 0.42   |
| III. Furniture, furnishing, household equipments & operation | 2.70   | 149.45  | 160.38  | 174.31  | 175.42 | 177.36 | 178.01 |
|  |        | 5.32    | 7.31    | 8.69    | 0.41   | 1.11   | 0.37   |
| IV. Medical care & health expenses                           | 2.79   | 175.03  | 185.41  | 191.72  | 191.94 | 191.96 | 192.92 |
|  |        | 5.09    | 5.93    | 3.40    | 0.10   | 0.01   | 0.50   |
| V. Transport & communication                                 | 2.98   | 191.31  | 201.06  | 211.49  | 212.00 | 212.22 | 213.22 |
|  |        | 6.92    | 5.10    | 5.19    | 0.03   | 0.10   | 0.47   |
| VI. Recreation, entertainment, education & cultural services | 3.20   | 168.85  | 174.74  | 178.03  | 178.98 | 179.33 | 181.25 |
|  |        | 9.80    | 3.49    | 1.88    | 0.31   | 0.20   | 1.07   |
| VII. Misc. goods & services                                  | 3.80   | 139.40  | 147.95  | 164.03  | 165.67 | 166.26 | 170.98 |
|  |        | 3.34    | 6.13    | 10.87   | 0.23   | 0.36   | 2.84   |

**Note :** Figures in italics indicate percentage change over previous year/month



### Table 4 Consumer Price Index (CPI) : All Urban

( 1995-96 = 100)

| CPI Classification   | Weight | 2005-06      | 2006-07     | 2007-08      | 2008         |             |             |
|--|--------|--------------|-------------|--------------|--------------|-------------|-------------|
|  |        |              |             |              | April        | May         | June        |
| <b>General</b>   | 100.00 | 161.39       | 172.73      | 189.65       | 190.90       | 191.78      | 199.02      |
|  |        | <i>6.68</i>  | <i>7.03</i> | <i>9.80</i>  | <i>-0.03</i> | <i>0.46</i> | <i>3.78</i> |
| 1. <b>Food</b> , beverage & tobacco                          | 48.80  | 174.18       | 189.06      | 213.73       | 214.85       | 215.81      | 229.72      |
|  |        | <i>8.09</i>  | <i>8.54</i> | <i>13.05</i> | <i>-0.29</i> | <i>0.45</i> | <i>6.45</i> |
| 2. <b>Non-food</b> of which                                  | 51.20  | 149.20       | 157.17      | 166.69       | 168.06       | 168.88      | 169.76      |
|  |        | <i>5.14</i>  | <i>5.34</i> | <i>6.06</i>  | <i>0.29</i>  | <i>0.49</i> | <i>0.52</i> |
| I. Clothing & footwear                                       | 6.79   | 148.72       | 159.02      | 170.51       | 170.96       | 172.97      | 174.15      |
|  |        | <i>3.87</i>  | <i>6.93</i> | <i>7.23</i>  | <i>0.09</i>  | <i>1.18</i> | <i>0.68</i> |
| II. Gross rent, fuel & lighting                              | 22.17  | 131.07       | 138.41      | 147.54       | 147.89       | 148.05      | 148.09      |
|  |        | <i>3.77</i>  | <i>5.60</i> | <i>6.60</i>  | <i>0.09</i>  | <i>0.11</i> | <i>0.03</i> |
| III. Furniture, furnishing, household equipments & operation | 2.58   | 155.49       | 168.05      | 188.92       | 195.75       | 196.71      | 199.51      |
|  |        | <i>6.28</i>  | <i>8.08</i> | <i>12.42</i> | <i>0.28</i>  | <i>0.49</i> | <i>1.42</i> |
| IV. Medical care & health expenses                           | 2.97   | 156.47       | 161.64      | 170.90       | 172.40       | 172.67      | 173.43      |
|  |        | <i>2.61</i>  | <i>3.30</i> | <i>5.73</i>  | <i>0.02</i>  | <i>0.16</i> | <i>0.44</i> |
| V. Transport & communication                                 | 7.07   | 192.53       | 201.38      | 209.84       | 211.60       | 212.65      | 213.75      |
|  |        | <i>5.55</i>  | <i>4.60</i> | <i>4.20</i>  | <i>0.10</i>  | <i>0.50</i> | <i>0.52</i> |
| VI. Recreation, entertainment, education & cultural services | 6.40   | 157.05       | 163.51      | 167.16       | 169.48       | 170.12      | 170.35      |
|  |        | <i>10.91</i> | <i>4.11</i> | <i>2.23</i>  | <i>1.17</i>  | <i>0.38</i> | <i>0.14</i> |
| VII. Misc. goods & services                                  | 3.22   | 152.62       | 159.93      | 173.16       | 176.29       | 179.37      | 184.77      |
|  |        | <i>5.40</i>  | <i>4.79</i> | <i>8.27</i>  | <i>0.96</i>  | <i>1.75</i> | <i>3.01</i> |

**Note :** Figures in italics indicate percentage change over previous year/month

