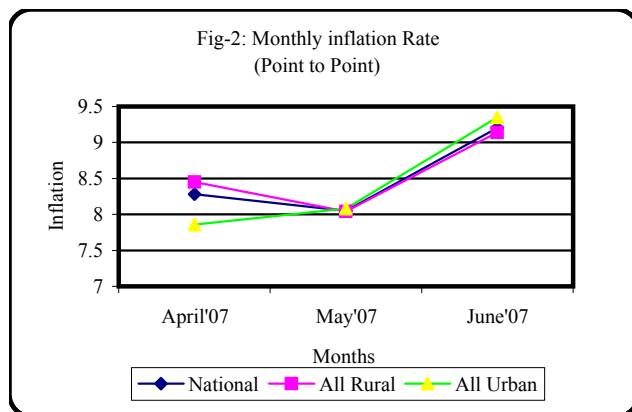
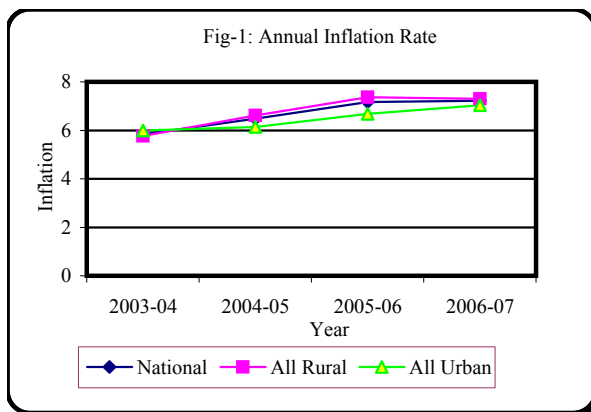


**Table 1 Consumer Price Index (CPI) And Inflation Rate  
(Point To Point)**

( 1995-96 = 100)

CPI Classification	2003-04	2004-05	2005-06	2006-07	2007		
					April	May	June
<b>NATIONAL</b>							
General index	143.90	153.23	164.21	176.06	180.73	181.73	184.89
<i>Inflation</i>	5.83	6.48	7.17	7.22	8.28	8.05	9.20
Food index	146.50	158.08	170.34	184.18	189.14	190.15	194.19
<i>Inflation</i>	6.93	7.91	7.76	8.12	8.98	8.35	9.82
Nonfood	141.03	147.14	156.56	165.79	170.33	171.36	173.19
<i>Inflation</i>	4.37	4.33	6.40	5.90	7.35	7.77	8.34
<b>ALL RURAL</b>							
General index	144.46	154.03	165.37	177.42	182.08	182.88	186.11
<i>Inflation</i>	5.77	6.62	7.36	7.30	8.45	8.04	9.14
Food index	145.22	156.82	168.77	182.18	186.57	187.32	191.43
<i>Inflation</i>	6.55	7.99	7.62	7.96	8.79	7.98	9.45
Nonfood	143.18	149.29	159.59	169.33	174.44	175.34	177.05
<i>Inflation</i>	4.47	4.27	6.90	6.10	7.83	8.15	8.55
<b>ALL URBAN</b>							
General index	142.54	151.29	161.39	172.73	177.43	178.93	181.92
<i>Inflation</i>	5.99	6.14	6.68	7.03	7.86	8.08	9.35
Food index	149.60	161.14	174.18	189.06	195.40	197.05	200.92
<i>Inflation</i>	7.80	7.71	8.09	8.54	9.44	9.21	10.71
Nonfood	135.80	141.90	149.20	157.17	160.32	161.66	163.80
<i>Inflation</i>	4.14	4.49	5.14	5.34	6.09	6.78	7.80

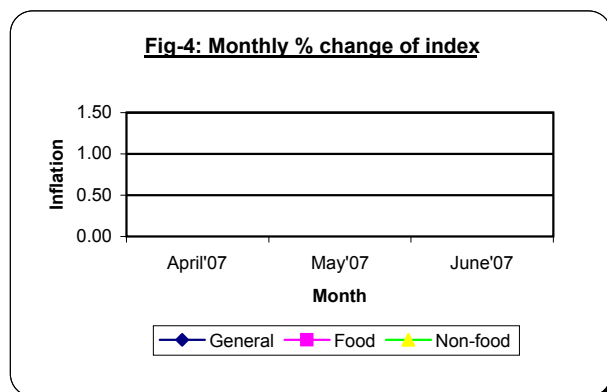
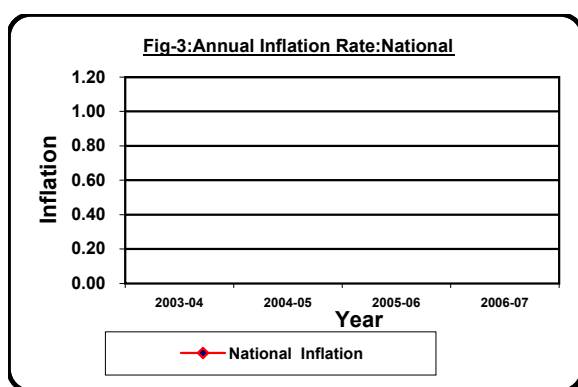


**Table 2 Consumer Price Index (CPI) : National**

( 1995-96 = 100)

CPI Classification	2003-04	2004-05	2005-06	2006-07	2007		
					April	May	June
<b>General</b>	143.90	153.23	164.21	176.06	180.73	181.73	184.89
1. <b>Food</b> , beverage & tobacco	146.50	158.08	170.34	184.18	189.14	190.15	194.19
2. <b>Non-food</b> of which	141.03	147.14	156.56	165.79	170.33	171.36	173.19
I. Clothing & footwear	136.25	142.15	148.35	156.79	159.92	161.16	161.34
II. Gross rent, fuel & lighting	136.19	141.43	152.02	162.32	167.97	168.87	172.07
III. Furniture, furnishing, household equipments & operation	137.95	143.18	151.21	162.61	170.02	172.38	173.14
IV. Medical care & health expenses	154.36	162.47	169.62	178.49	181.62	181.96	183.94
V. Transport & communication	170.79	179.94	191.66	201.15	205.82	207.48	208.44
VI. Recreation, entertainment, education & cultural services	141.31	150.24	165.42	171.47	172.60	173.26	172.95
VII. Misc. goods & services	133.82	137.78	143.25	151.44	156.63	157.38	159.88

**Note** : Figures in italics indicate percentage change over previous year/month

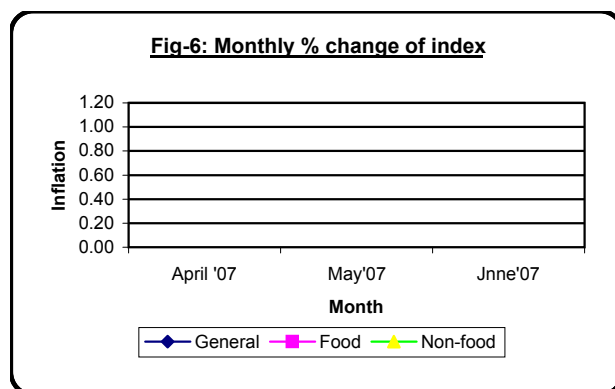
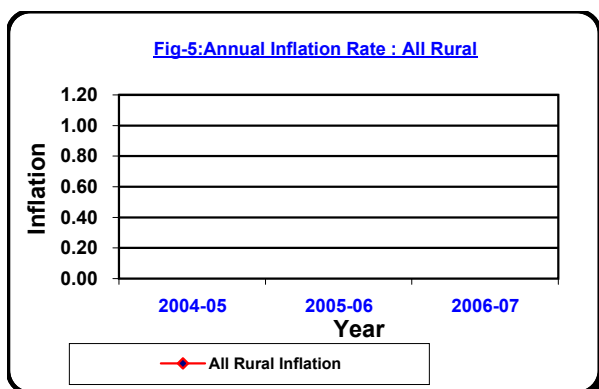


### Table 3 Consumer Price Index (CPI) : All Rural

( 1995-96 = 100)

CPI Classification	Weight	2004-05	2005-06	2006-07	2007		
					April	May	June
<b>General</b>	100.00	154.03	165.37	177.42	182.08	182.88	186.11
1. <b>Food</b> , beverage & tobacco	62.96	156.82	168.77	182.18	186.57	187.32	191.43
2. <b>Non-food</b> of which	37.04	149.29	159.59	169.33	174.44	175.34	177.05
I. Clothing & footwear	6.88	141.73	148.19	155.88	158.13	159.10	159.31
II. Gross rent, fuel & lighting	14.69	147.64	160.63	172.14	179.16	179.99	182.61
III. Furniture, furnishing, household equipments & operation	2.70	141.90	149.45	160.38	168.27	170.23	171.24
IV. Medical care & health expenses	2.79	166.56	175.03	185.41	188.39	188.55	190.98
V. Transport & communication	2.98	178.92	191.31	201.06	205.75	207.71	209.01
VI. Recreation, entertainment, education & cultural services	3.20	153.78	168.85	174.74	176.00	176.25	175.96
VII. Misc. goods & services	3.80	134.90	139.40	147.95	153.98	154.52	157.48

**Note :** Figures in italics indicate percentage change over previous year/month

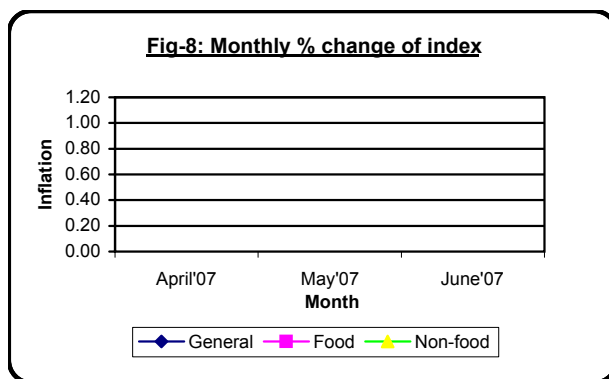
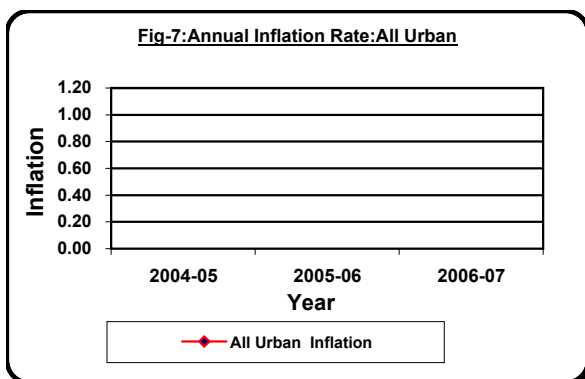


**Table 4 Consumer Price Index (CPI) : All Urban**

( 1995-96 = 100)

CPI Classification	Weight	2004-05	2005-06	2006-07	2007		
					April	May	June
<b>General</b>	100.00	151.29	161.39	172.73	177.43	178.93	181.92
1. <b>Food</b> , beverage & tobacco	48.80	161.14	174.18	189.06	195.40	197.05	200.92
2. <b>Non-food</b> of which	51.20	141.90	149.20	157.17	160.32	161.66	163.80
I. Clothing & footwear	6.79	143.18	148.72	159.02	164.28	166.16	166.27
II. Gross rent, fuel & lighting	22.17	126.31	131.07	138.41	140.71	141.78	146.41
III. Furniture, furnishing, household equipments & operation	2.58	146.30	155.49	168.05	174.27	177.63	177.76
IV. Medical care & health expenses	2.97	152.49	156.47	161.64	165.13	165.91	166.81
V. Transport & communication	7.07	182.41	192.53	201.38	205.99	206.92	207.06
VI. Recreation, entertainment, education & cultural services	6.40	141.60	157.05	163.51	164.31	165.99	165.62
VII. Misc. goods & services	3.22	144.80	152.62	159.93	163.07	164.34	165.73

**Note :** Figures in italics indicate percentage change over previous year/month



**Table 5 Average Retail Prices (Open Market) Of Selected Commodities In Dhaka City  
During The Month Of June '07**

SL. No.	Item with specification	Unit	2006-2007	April'07	May'07	June'07
<b>I. Cereals :</b>						
1.	Rice (Fine)	Kg.	35.81	37.15	37.91	37.98
2.	Rice (Medium )	Kg.	25.87	27.13	28.10	27.96
3.	Rice (coarse)	Kg.	19.87	20.92	22.30	22.17
4.	Wheat (atta), white	Kg.	24.84	26.67	26.90	26.68
<b>II. Pulses :</b>						
5.	Moongdal (husked)	Kg.	70.72	69.98	70.07	70.12
6.	Masurdal (husked)	Kg.	68.12	69.15	71.49	72.25
<b>III. Sugar &amp; Gur :</b>						
7.	Sugar (white)	Kg.	39.43	34.25	32.99	31.86
8.	Gur (sugarcane)	Kg.	36.69	35.06	34.56	33.95
<b>IV. Protein Items :</b>						
9.	Fish-Rohu-cut piece	Kg.	201.01	191.77	203.77	211.69
10.	Fish-Hilsa,medium size	Kg.	304.34	320.80	345.56	336.57
11.	Chingri,about 3" long	Kg.	421.02	412.56	412.10	418.81
12.	Shingi, about 50 gram weight ea	Kg.	402.83	401.39	447.53	439.41
13.	Beef,best quality	Kg.	158.11	169.58	173.01	175.39
14.	Mutton, best quality	Kg.	224.78	240.62	243.61	242.01
15.	Fowl,alive	Kg.	160.24	164.35	174.38	175.29
16.	Eggs (Hen)	Hali of 4	20.35	19.82	19.63	20.04
17.	Eggs (Duck)	Hali of 4	18.71	18.83	16.14	18.36
<b>V. Edible oil :</b>						
18.	Mustard oil,best quality	Kg.	89.66	104.71	110.29	113.54
19.	Soyabean oil, best quality	Kg.	65.12	74.29	76.31	76.55
<b>VI. Spices :</b>						
20.	Chillies (dry), best quality	Kg.	152.25	148.85	144.20	139.77
21.	Onion	Kg.	20.90	16.82	17.38	19.15
22.	Garlic	Kg.	83.97	55.79	56.50	58.26
23.	Turmeric	Kg.	71.13	68.84	68.71	67.70
24.	Salt (fine)	Kg.	16.48	16.71	16.91	17.04

Contd.

**Table 5 Average Retail Prices (Open Market) Of Selected Commodities In Dhaka City  
During The Month Of June '07**

SL. No.	Item with specification	Unit	2006-2007	April'07	May'07	June'07
<b>VII. Vegetable :</b>						
25.	Potato, best quality	Kg.	17.95	15.77	18.86	20.24
26.	Brinjal, best quality	Kg.	23.47	14.52	20.45	24.02
27.	Lady's finger, best quality	Kg.	21.81	15.76	16.46	18.53
28.	Papaya (green)	Kg.	10.02	9.72	12.31	11.64
<b>VIII. Milk :</b>						
29.	Milk (fresh-cow)	Litre	30.91	30.92	31.67	32.00
30.	Lactozen (full cream)(400gm)	Each	280.77	299.52	300.39	301.35
<b>IX. Fuel &amp; lighting :</b>						
31.	Fire wood (gazari)	Quintal	407.25	450.00	450.00	450.00
32.	Kerosene (white)	Litre	39.80	41.65	42.00	45.00
33.	Matches (40 sticks)	Box	1.00	1.00	1.00	1.00
<b>X. Clothing :</b>						
34.	Longcloth (fine)	Metre	38.42	38.50	38.00	38.00
35.	Longcloth (med.)	Metre	36.76	37.00	37.00	37.00
36.	Saree (med.), white Tangail handloom:A451 80x80 count 5.5	Each	381.63	380.00	400.00	400.00
37.	Lungi (med.) 48" handloom 60X	Each	218.54	225.00	225.00	225.00
38.	Undershirt (ganjee 36" seleevek	Each	51.83	55.00	55.00	55.00
<b>XI. Housing &amp; Household Requisites :</b>						
39.	Cement (local)	bag of 50 Kg	316.42	335.00	335.00	345.00
40.	Aluminium (Degchi)	Gram	0.38	0.52	0.52	0.52
41.	Bamboo (mulu) about 30 feet lon	Each	35.33	40.00	45.00	45.00
42.	Enamel plate	Each	27.82	30.84	35.00	35.00
<b>XII. Miscellaneous :</b>						
43.	Cocoanut oil (unscented, import	Kg.	167.71	168.00	168.00	170.00
44.	Cigarettes-Scissors	10 Sticks	NA	NA	NA	NA
45.	Cigarettes-Star	10 Sticks	12.14	11.94	12.10	12.21
46.	White paper	Quire	16.59	18.00	18.00	18.00
47.	Blade-Sword (stainless steel)	Each	2.00	2.00	2.00	2.00