

**Table 1. Consumer Price Index (CPI) And Inflation Rate
(Point To Point)**

(1995-96 = 100)

CPI Classification	2004-05	2005-06	2006-07	2007-08	2008		
					Sep	Oct	Nov
NATIONAL							
General index	153.23	164.21	176.06	193.54	210.14	209.31	207.14
<i>Inflation</i>	6.48	7.17	7.22	9.93	10.19	7.26	6.12
Food index	158.08	170.34	184.18	206.79	227.66	226.88	223.98
<i>Inflation</i>	7.91	7.76	8.12	12.28	12.07	8.08	6.68
Nonfood	147.14	156.56	165.79	176.26	187.10	186.13	184.95
<i>Inflation</i>	4.33	6.40	5.90	6.32	7.19	5.95	5.25
ALL RURAL							
General index	154.03	165.37	177.42	195.14	212.72	211.58	209.82
<i>Inflation</i>	6.62	7.36	7.30	9.99	10.62	7.31	6.40
Food index	156.82	168.77	182.18	203.93	224.69	223.71	221.45
<i>Inflation</i>	7.99	7.62	7.96	11.94	12.13	7.87	6.77
Nonfood	149.29	159.59	169.33	180.19	192.38	190.95	190.06
<i>Inflation</i>	4.27	6.90	6.10	6.41	7.76	6.21	5.68
ALL URBAN							
General index	151.29	161.39	172.73	189.65	203.85	203.77	200.63
<i>Inflation</i>	6.14	6.68	7.03	9.80	9.12	7.12	5.43
Food index	161.14	174.18	189.06	213.73	234.90	234.60	230.13
<i>Inflation</i>	7.71	8.09	8.54	13.05	11.93	8.59	6.48
Nonfood	141.90	149.20	157.17	166.69	174.25	174.38	172.52
<i>Inflation</i>	4.49	5.14	5.34	6.06	5.70	5.28	4.13

Fig-1: Annual Inflation Rate

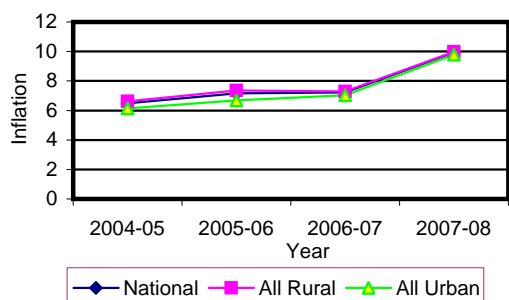


Fig-2: Monthly inflation Rate (Point to Point)

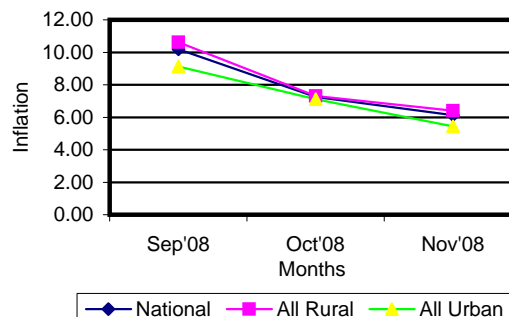


Table 2. Consumer Price Index (CPI) : National

(1995-96 = 100)

CPI Classification	2004-05	2005-06	2006-07	2007-08	2008		
					Sep	Oct	Nov
General	153.23 <i>6.48</i>	164.21 <i>7.17</i>	176.06 <i>7.22</i>	193.54 <i>9.93</i>	210.14 <i>1.38</i>	209.31 <i>-0.39</i>	207.14 <i>-1.04</i>
1. Food , beverage & tobacco	158.08 <i>7.90</i>	170.34 <i>7.76</i>	184.18 <i>8.12</i>	206.79 <i>12.28</i>	227.66 <i>1.74</i>	226.88 <i>-0.34</i>	223.98 <i>-1.28</i>
2. Non-food of which	147.14 <i>4.33</i>	156.56 <i>6.40</i>	165.79 <i>5.90</i>	176.26 <i>6.32</i>	187.10 <i>0.74</i>	186.13 <i>-0.52</i>	184.95 <i>-0.63</i>
I. Clothing & footwear	142.15 <i>4.38</i>	148.35 <i>4.36</i>	156.79 <i>5.69</i>	164.53 <i>4.94</i>	171.36 <i>1.44</i>	171.50 <i>0.08</i>	171.74 <i>0.14</i>
II. Gross rent, fuel & lighting	141.43 <i>2.52</i>	152.02 <i>7.49</i>	162.32 <i>6.78</i>	174.7 <i>7.63</i>	189.09 <i>0.72</i>	186.45 <i>-1.40</i>	183.70 <i>-1.47</i>
III. Furniture, furnishing, household equipments & operation	143.18 <i>3.79</i>	151.21 <i>5.61</i>	162.61 <i>7.54</i>	178.56 <i>9.81</i>	190.57 <i>0.60</i>	190.70 <i>0.07</i>	190.79 <i>0.05</i>
IV. Medical care & health expenses	162.47 <i>5.25</i>	169.62 <i>4.40</i>	178.49 <i>5.23</i>	185.66 <i>4.02</i>	187.93 <i>0.02</i>	187.96 <i>0.02</i>	187.98 <i>0.01</i>
V. Transport & communication	179.94 <i>5.36</i>	191.66 <i>6.51</i>	201.15 <i>4.95</i>	211.01 <i>4.90</i>	220.94 <i>0.20</i>	221.03 <i>0.04</i>	220.18 <i>-0.38</i>
VI. Recreation, entertainment, education & cultural services	150.24 <i>6.32</i>	165.42 <i>10.10</i>	171.47 <i>3.66</i>	174.86 <i>1.98</i>	179.59 <i>0.19</i>	179.64 <i>0.03</i>	179.69 <i>0.03</i>
VII. Misc. goods & services	137.78 <i>2.96</i>	143.25 <i>3.97</i>	151.44 <i>5.72</i>	166.69 <i>10.07</i>	183.41 <i>1.88</i>	183.84 <i>0.23</i>	184.06 <i>0.12</i>

Note : Figures in italics indicate percentage change over previous year/month

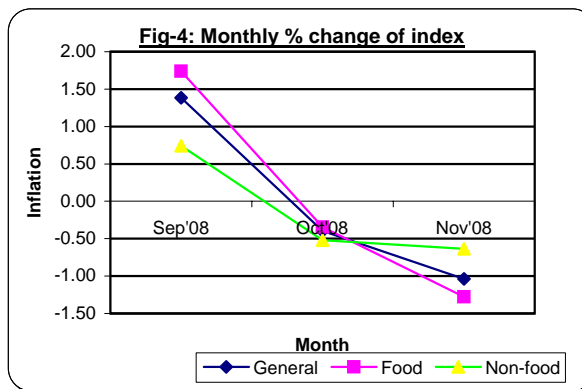
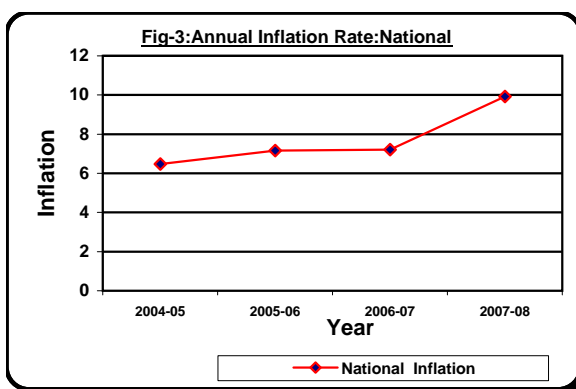


Table 3. Consumer Price Index (CPI) : All Rural

(1995-96 = 100)

CPI Classification	Weight	2005-06	2006-07	2007-08	2008		
					Sep	Oct	Nov
General	100.00	165.37	177.42	195.14	212.72	211.58	209.82
		7.36	7.29	9.99	1.52	-0.54	-0.83
1. Food , beverage & tobacco	62.96	168.77	182.18	203.93	224.69	223.71	221.45
		7.62	7.95	11.94	1.89	-0.44	-1.01
2. Non-food of which	37.04	159.59	169.33	180.19	192.38	190.95	190.06
		6.90	6.10	6.41	0.81	-0.74	-0.47
I. Clothing & footwear	6.88	148.19	155.88	162.08	168.05	167.97	168.29
		4.56	5.19	3.98	1.13	-0.05	0.19
II. Gross rent, fuel & lighting	14.69	160.63	172.14	185.85	205.22	201.58	199.07
		8.80	7.17	7.96	0.89	-1.77	-1.25
III. Furniture, furnishing, household equipments & operation	2.70	149.45	160.38	174.31	184.86	184.94	185.04
		5.32	7.31	8.69	0.57	0.04	0.05
IV. Medical care & health expenses	2.79	175.03	185.41	191.72	193.29	193.30	193.31
		5.09	5.93	3.40	0.02	0.01	0.01
V. Transport & communication	2.98	191.31	201.06	211.49	217.75	217.80	217.94
		6.92	5.10	5.19	0.20	0.02	0.06
VI. Recreation, entertainment, education & cultural services	3.20	168.85	174.74	178.03	182.95	183.00	183.03
		9.80	3.49	1.88	0.21	0.03	0.02
VII. Misc. goods & services	3.80	139.40	147.95	164.03	179.50	179.68	179.82
		3.34	6.13	10.87	1.80	0.10	0.08

Note : Figures in italics indicate percentage change over previous year/month

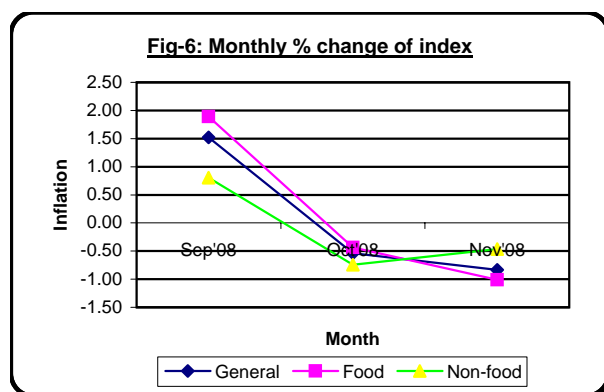
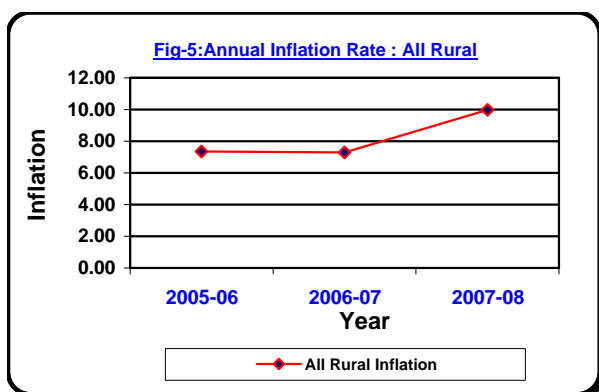


Table 4. Consumer Price Index (CPI) : All Urban

(1995-96 = 100)

CPI Classification	Weight	2005-06	2006-07	2007-08	2008		
					Sep	Oct	Nov
General	100.00	161.39	172.73	189.65	203.85	203.77	200.63
		6.68	7.03	9.80	1.04	-0.04	-1.54
1. Food , beverage & tobacco	48.80	174.18	189.06	213.73	234.90	234.60	230.13
		8.09	8.54	13.05	1.39	-0.13	-1.91
2. Non-food of which	51.20	149.20	157.17	166.69	174.25	174.38	172.52
		5.14	5.34	6.06	0.58	0.07	-1.07
I. Clothing & footwear	6.79	148.72	159.02	170.51	179.41	180.09	180.13
		3.87	6.93	7.23	2.18	0.38	0.02
II. Gross rent, fuel & lighting	22.17	131.07	138.41	147.54	149.82	149.62	146.27
		3.77	5.60	6.60	0.15	-0.13	-2.24
III. Furniture, furnishing, household equipments & operation	2.58	155.49	168.05	188.92	204.49	204.73	204.78
		6.28	8.08	12.42	0.67	0.12	0.02
IV. Medical care & health expenses	2.97	156.47	161.64	170.90	174.88	174.97	174.99
		2.61	3.30	5.73	0.03	0.05	0.01
V. Transport & communication	7.07	192.53	201.38	209.84	228.71	228.88	225.62
		5.55	4.60	4.20	0.20	0.07	-1.42
VI. Recreation, entertainment, education & cultural services	6.40	157.05	163.51	167.16	171.40	171.46	171.54
		10.91	4.11	2.23	0.13	0.04	0.05
VII. Misc. goods & services	3.22	152.62	159.93	173.16	192.94	193.97	194.38
		5.40	4.79	8.27	2.08	0.53	0.21

Note : Figures in italics indicate percentage change over previous year/month

