

**Table 1. Consumer Price Index (CPI) And Inflation Rate
(Point To Point)**

(1995-96 = 100)

CPI Classification	2004-05	2005-06	2006-07	2007-08	2008		
					Aug	Sep	Oct
NATIONAL							
General index	153.23	164.21	176.06	193.54	207.27	210.14	209.31
<i>Inflation</i>	6.48	7.17	7.22	9.93	10.11	10.19	7.26
Food index	158.08	170.34	184.18	206.79	223.77	227.66	226.88
<i>Inflation</i>	7.91	7.76	8.12	12.28	12.36	12.07	8.08
Nonfood	147.14	156.56	165.79	176.26	185.72	187.10	186.13
<i>Inflation</i>	4.33	6.40	5.90	6.32	6.55	7.19	5.95
ALL RURAL							
General index	154.03	165.37	177.42	195.14	209.53	212.72	211.58
<i>Inflation</i>	6.62	7.36	7.30	9.99	10.51	10.62	7.31
Food index	156.82	168.77	182.18	203.93	220.52	224.69	223.71
<i>Inflation</i>	7.99	7.62	7.96	11.94	12.34	12.13	7.87
Nonfood	149.29	159.59	169.33	180.19	190.84	192.38	190.95
<i>Inflation</i>	4.27	6.90	6.10	6.41	7.05	7.76	6.21
ALL URBAN							
General index	151.29	161.39	172.73	189.65	201.75	203.85	203.77
<i>Inflation</i>	6.14	6.68	7.03	9.80	9.11	9.12	7.12
Food index	161.14	174.18	189.06	213.73	231.67	234.90	234.60
<i>Inflation</i>	7.71	8.09	8.54	13.05	12.40	11.93	8.59
Nonfood	141.90	149.20	157.17	166.69	173.24	174.25	174.38
<i>Inflation</i>	4.49	5.14	5.34	6.06	5.20	5.70	5.28

Fig-1: Annual Inflation Rate

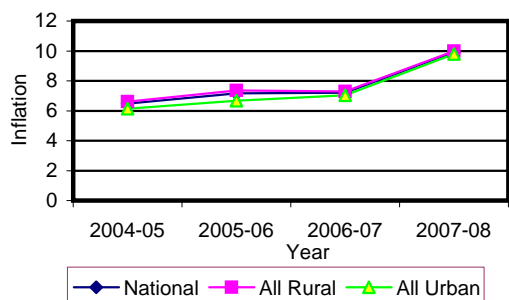


Fig-2: Monthly inflation Rate (Point to Point)

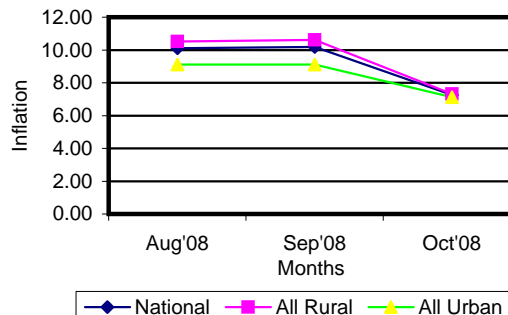


Table 2. Consumer Price Index (CPI) : National

(1995-96 = 100)

CPI Classification	2004-05	2005-06	2006-07	2007-08	2008		
					Aug	Sep	Oct
General	153.23 6.48	164.21 7.17	176.06 7.22	193.54 9.93	207.27 0.20	210.14 1.38	209.31 -0.39
1. Food , beverage & tobacco	158.08 7.90	170.34 7.76	184.18 8.12	206.79 12.28	223.77 -0.08	227.66 1.74	226.88 -0.34
2. Non-food of which	147.14 4.33	156.56 6.40	165.79 5.90	176.26 6.32	185.72 0.69	187.10 0.74	186.13 -0.52
I. Clothing & footwear	142.15 4.38	148.35 4.36	156.79 5.69	164.53 4.94	168.92 0.21	171.36 1.44	171.50 0.08
II. Gross rent, fuel & lighting	141.43 2.52	152.02 7.49	162.32 6.78	174.7 7.63	187.74 0.91	189.09 0.72	186.45 -1.40
III. Furniture, furnishing, household equipments & operation	143.18 3.79	151.21 5.61	162.61 7.54	178.56 9.81	189.43 1.79	190.57 0.60	190.70 0.07
IV. Medical care & health expenses	162.47 5.25	169.62 4.40	178.49 5.23	185.66 4.02	187.90 0.06	187.93 0.02	187.96 0.02
V. Transport & communication	179.94 5.36	191.66 6.51	201.15 4.95	211.01 4.90	220.50 0.27	220.94 0.20	221.03 0.04
VI. Recreation, entertainment, education & cultural services	150.24 6.32	165.42 10.10	171.47 3.66	174.86 1.98	179.25 0.18	179.59 0.19	179.64 0.03
VII. Misc. goods & services	137.78 2.96	143.25 3.97	151.44 5.72	166.69 10.07	180.02 1.33	183.41 1.88	183.84 0.23

Note : Figures in italics indicate percentage change over previous year/month

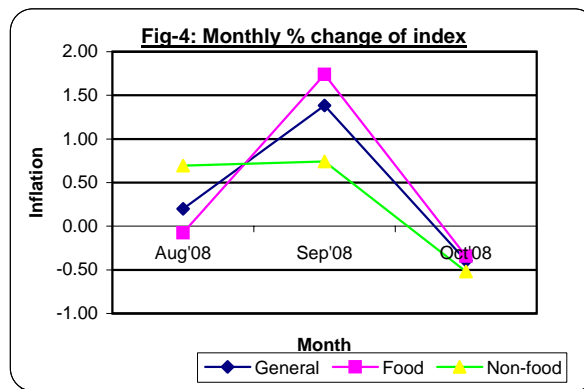
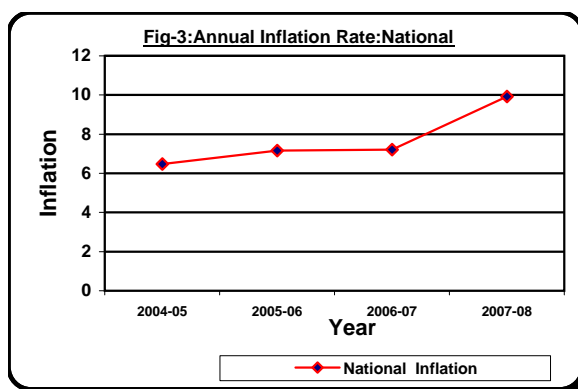


Table 3. Consumer Price Index (CPI) : All Rural

(1995-96 = 100)

CPI Classification	Weight	2005-06	2006-07	2007-08	2008		
					Aug	Sep	Oct
General	100.00	165.37	177.42	195.14	209.53	212.72	211.58
		7.36	7.29	9.99	0.25	1.52	-0.54
1. Food , beverage & tobacco	62.96	168.77	182.18	203.93	220.52	224.69	223.71
		7.62	7.95	11.94	-0.04	1.89	-0.44
2. Non-food of which	37.04	159.59	169.33	180.19	190.84	192.38	190.95
		6.90	6.10	6.41	0.81	0.81	-0.74
I. Clothing & footwear	6.88	148.19	155.88	162.08	166.18	168.05	167.97
		4.56	5.19	3.98	0.20	1.13	-0.05
II. Gross rent, fuel & lighting	14.69	160.63	172.14	185.85	203.40	205.22	201.58
		8.80	7.17	7.96	1.08	0.89	-1.77
III. Furniture, furnishing, household equipments & operation	2.70	149.45	160.38	174.31	183.81	184.86	184.94
		5.32	7.31	8.69	2.18	0.57	0.04
IV. Medical care & health expenses	2.79	175.03	185.41	191.72	193.26	193.29	193.30
		5.09	5.93	3.40	0.03	0.02	0.01
V. Transport & communication	2.98	191.31	201.06	211.49	217.31	217.75	217.80
		6.92	5.10	5.19	0.27	0.20	0.02
VI. Recreation, entertainment, education & cultural services	3.20	168.85	174.74	178.03	182.57	182.95	183.00
		9.80	3.49	1.88	0.16	0.21	0.03
VII. Misc. goods & services	3.80	139.40	147.95	164.03	176.33	179.50	179.68
		3.34	6.13	10.87	1.34	1.80	0.10

Note : Figures in italics indicate percentage change over previous year/month

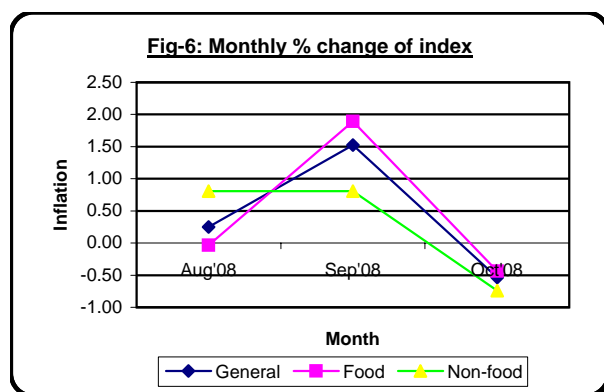
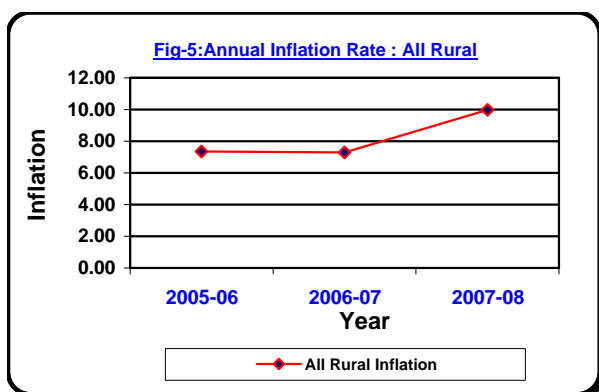


Table 4. Consumer Price Index (CPI) : All Urban

(1995-96 = 100)

CPI Classification	Weight	2005-06	2006-07	2007-08	2008		
					Aug	Sep	Oct
General	100.00	161.39	172.73	189.65	201.75	203.85	203.77
		6.68	7.03	9.80	0.06	1.04	-0.04
1. Food , beverage & tobacco	48.80	174.18	189.06	213.73	231.67	234.90	234.60
		8.09	8.54	13.05	-0.18	1.39	-0.13
2. Non-food of which	51.20	149.20	157.17	166.69	173.24	174.25	174.38
		5.14	5.34	6.06	0.39	0.58	0.07
I. Clothing & footwear	6.79	148.72	159.02	170.51	175.58	179.41	180.09
		3.87	6.93	7.23	0.23	2.18	0.38
II. Gross rent, fuel & lighting	22.17	131.07	138.41	147.54	149.60	149.82	149.62
		3.77	5.60	6.60	0.34	0.15	-0.13
III. Furniture, furnishing, household equipments & operation	2.58	155.49	168.05	188.92	203.12	204.49	204.73
		6.28	8.08	12.42	0.92	0.67	0.12
IV. Medical care & health expenses	2.97	156.47	161.64	170.90	174.83	174.88	174.97
		2.61	3.30	5.73	0.17	0.03	0.05
V. Transport & communication	7.07	192.53	201.38	209.84	228.26	228.71	228.88
		5.55	4.60	4.20	0.26	0.20	0.07
VI. Recreation, entertainment, education & cultural services	6.40	157.05	163.51	167.16	171.18	171.40	171.46
		10.91	4.11	2.23	0.26	0.13	0.04
VII. Misc. goods & services	3.22	152.62	159.93	173.16	189.01	192.94	193.97
		5.40	4.79	8.27	1.30	2.08	0.53

Note : Figures in italics indicate percentage change over previous year/month

